

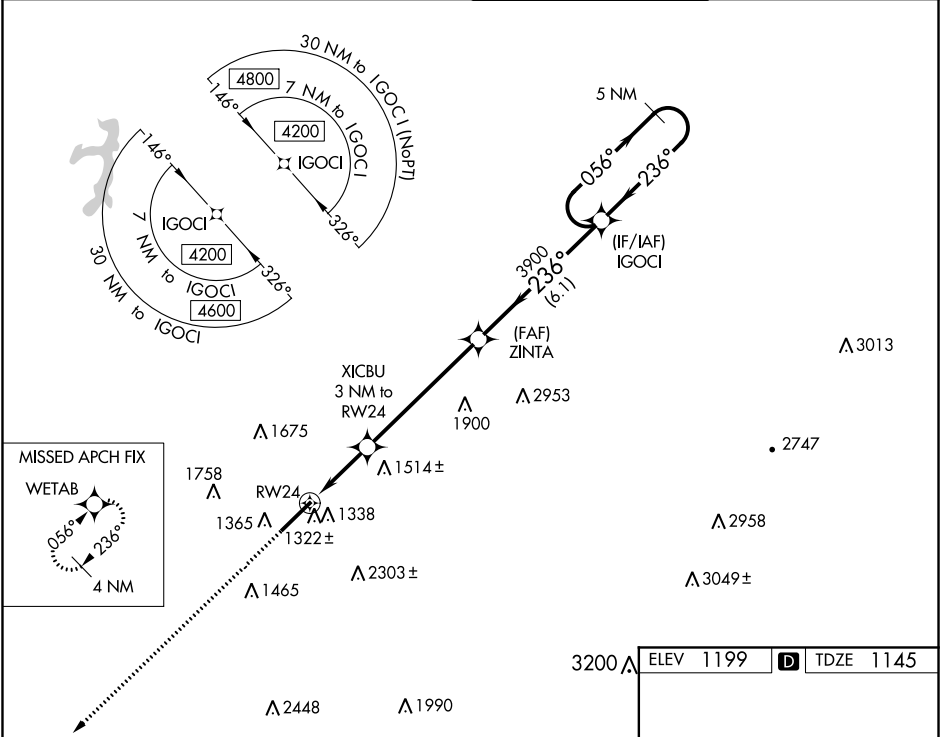
WAAS CH 70499 W24A	APP CRS 236°	Rwy Idg TDZE Apt Elev	7372 1145 1199
--	------------------------	-----------------------------	---

RNAV (GPS) RWY 24

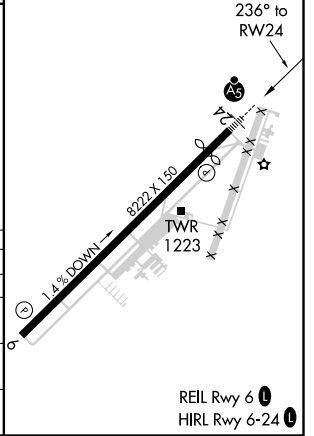
ARNOLD PALMER RGNL (L.B.E.)

<p>For uncompensated Baro-VNAV systems, LNAV/VNAV NA below -17°C (2°F) or above 54°C (130°F). Circling NA southeast of Rwy 6-24. DME/DME RNP-0.3 NA.</p>	<p>MALS/R</p>	<p>MISSED APPROACH: Climb to 4200 direct WETAB and hold, continue climb-in-hold to 4200.</p>
	<p>ATIS 118.375 JOHNSTOWN APP CON* 121.2 299.2 PALMER TOWER* 125.0 (CTAF) 0 GND CON 121.8</p>	

ATIS 118.375	JOHNSTOWN APP CON* 121.2 299.2	PALMER TOWER* 125.0 (CTAF) 0	GND CON 121.8
------------------------	--	--	-------------------------



4200	WETAB	5 NM Holding Pattern	
*LNAV only.		ZINTA	IGOCI
		XICBU 3 NM to RW24	3900
		*1.2 NM to RW24	236°
		*2140	056° → 4200
			← 236°
			GP 3.00° TCH 55
			1.2 1.8 NM 5.5 NM 6.1 NM
CATEGORY	A	B	C
LPV DA		1345 - 1/2	200 (200-1/2)
LNAV/VNAV DA		1498 - 3/4	353 (300-3/4)
LNAV MDA	1580 - 1/2	435 (400-1/2)	1580 - 3/4 435 (400-3/4)
CIRCLING	1740 - 1 541 (600-1)	1780 - 1 581 (600-1)	2060 - 2 1/2 861 (900-2 1/2) 2060 - 2 3/4 861 (900-2 3/4)



NE-4, 30 DEC 2021 to 27 JAN 2022

NE-4, 30 DEC 2021 to 27 JAN 2022