

SAN CLEMENTE, CALIFORNIA

RNAV (GPS) RWY 24

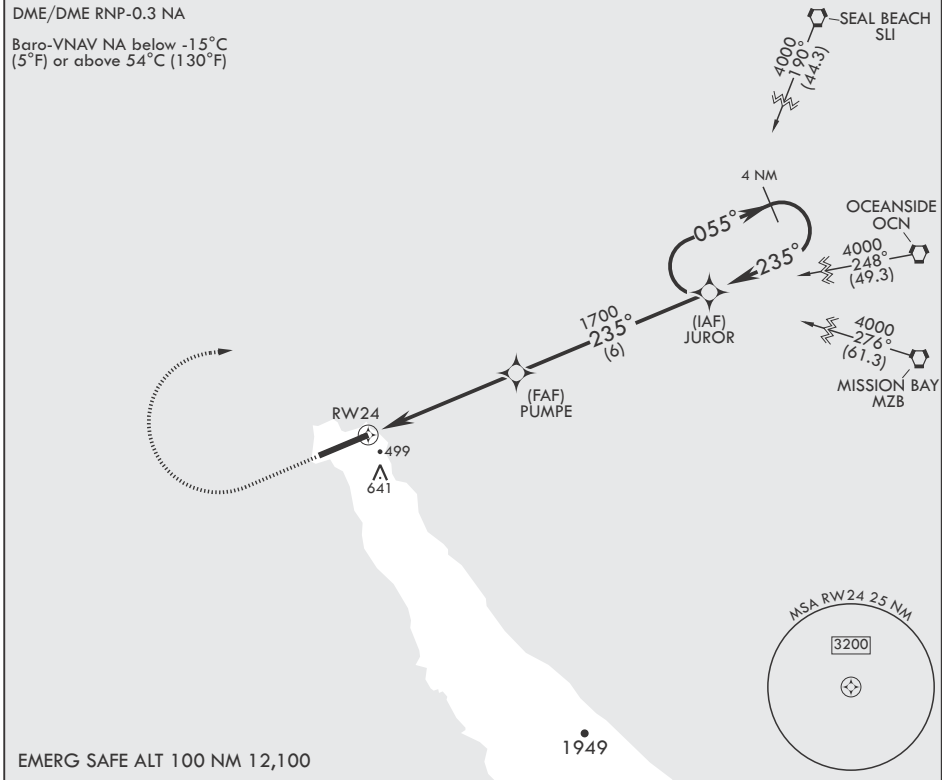
19115

APCH CRS	Rwy Idg	9301
235°	TDZE	184
	Arprt Elev	184

AL-5126 (USN)
SAN CLEMENTE ISLAND NALF (FREDERICK SHERMAN FLD) (KNUC)

⚠ * Circling not authorized S of Rwy 6-24. MISSED APPROACH: Climb to 1500, then climbing right turn to 3000 direct JUROR and hold.

ATIS*	SAN CLEMENTE APP CON	TOWER*	GND CON	ASR/PAR
268.6	127.05 292.15	126.75 278.8	119.55 251.05	



EMERG SAFE ALT 100 NM 12,100

1500	3000	JUROR	ELEV 184	TDZE 184
CATEGORY	A	B	C	D
LNAV/VNAV DA	631-1 ³ / ₈ 447 (500-1 ³ / ₈)	642-1 ³ / ₈ 458 (500-1 ³ / ₈)	650-1 ³ / ₈ 466 (500-1 ³ / ₈)	661-1 ³ / ₈ 477 (500-1 ³ / ₈)
LNAV MDA	760-1 576 (600-1)	760-1 ⁵ / ₈ 576 (600-1 ⁵ / ₈)	780-1 ⁵ / ₈ 596 (600-1 ⁵ / ₈)	780-2 596 (600-2)
CIRCLING*	780-1 596 (600-1)	780-1 ⁵ / ₈ 596 (600-1 ⁵ / ₈)	780-2 596 (600-2)	780-2 596 (600-2)

REIL Rwy 6
REIL Rwy 24
HIRL Rwy 6-24

SAN CLEMENTE, CALIFORNIA
Amdt 3 25APR19

SAN CLEMENTE ISLAND NALF (FREDERICK SHERMAN FLD) (KNUC)
33°01'N - 118°35'W

RNAV (GPS) RWY 24

SW-3, 30 DEC 2021 to 27 JAN 2022

SW-3, 30 DEC 2021 to 27 JAN 2022