

SAN CLEMENTE ISLAND, CALIFORNIA

# TACAN RWY 24

SAN CLEMENTE ISLAND NALF  
(FREDERICK SHERMAN FLD) (KNUC)

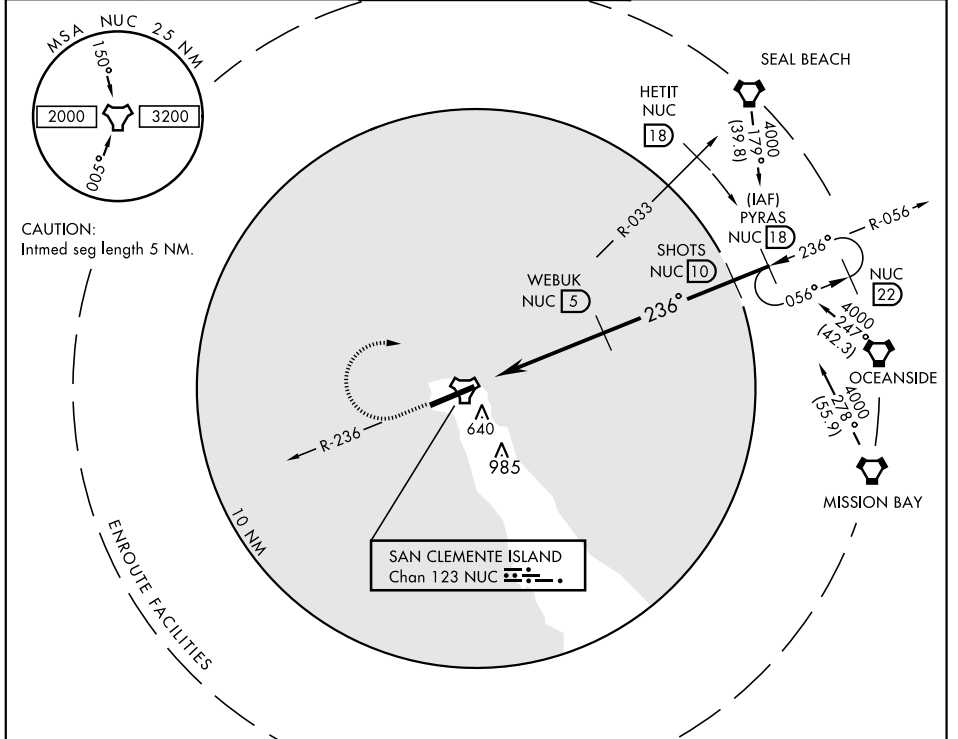
TACAN NUC Chan <b>123</b>	APCH CRS <b>236°</b>	Rwy Idg TDZE Arprt Elev <b>9301</b> <b>184</b> <b>184</b>
------------------------------	-------------------------	--

AL-5126 [USN]

**▽** \* Circling not authorized S of Rwy 6-24.

MISSED APPROACH: Climb to 1500 via NUC TACAN R-236 then climbing right turn to 4000 via NUC R-033 to HETIT. Then arc NE of NUC TACAN via the 18 DME arc to PYRAS and hold.

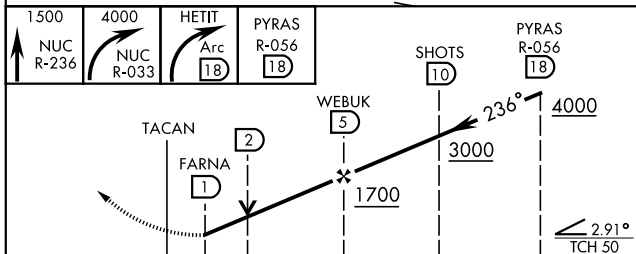
ATIS ★ <b>268.6</b>	SAN CLEMENTE APP CON <b>127.05 292.15</b>	SAN CLEMENTE ISLAND TOWER ★ <b>126.75 278.8</b>	GND CON <b>0 119.55 251.05</b>	ASR/PAR
------------------------	--	--	-----------------------------------	---------



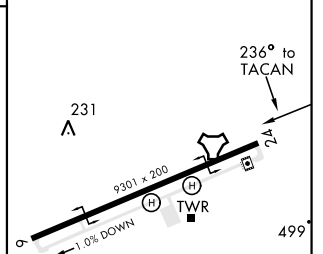
SW-3, 30 DEC 2021 to 27 JAN 2022

SW-3, 30 DEC 2021 to 27 JAN 2022

EMERG SAFE ALT 100 NM 12,100



ELEV 184	TDZE 184
----------	----------



CATEGORY	A	B	C	D
S-24	780-1	596 (600-1)	780-1¾	596 (600-1¾)
CIRCLING *	780-1	596 (600-1)	780-1¾ 596 (600-1¾)	780-2 596 (600-2)

REIL Rwy 6

REIL Rwy 24

HIRL Rwy 6-24

SAN CLEMENTE ISLAND, CALIFORNIA  
Amdt 3 25APR19

33°01'N-118°35'W

SAN CLEMENTE ISLAND NALF (KNUC)  
(FREDERICK SHERMAN FLD)

# TACAN RWY 24