

ILS Y or LOC/DME RWY 30

| | | |
|---------------------------|-------------------------|---|
| LOC I-NSI 109.7 | APCH CRS 301° | Rwy Idg 10,002 TDZE 506 Arpt Elev 506 |
|---------------------------|-------------------------|---|

AL-5162 [USN]

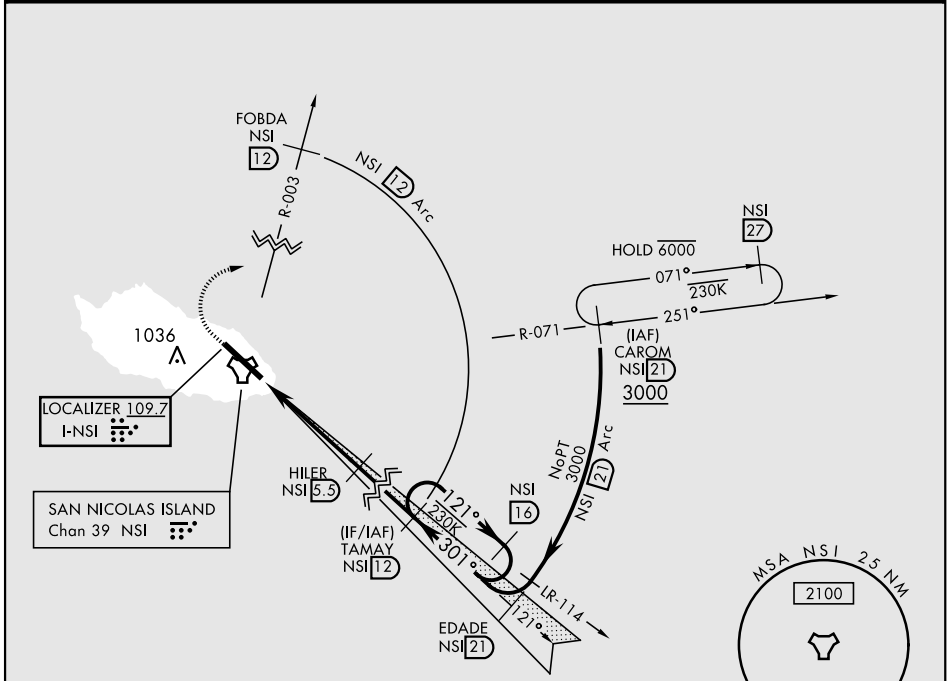
SAN NICOLAS ISLAND NOLF (KNSI)

DME required for ILS procedure. RADAR or TACAN required.

MISSED APPROACH: Climb to 1000 via heading 301°, then climbing right turn to 3000 to intercept NSI TACAN R-003 to FOBDA, then arc E of NSI 12 mile arc to TAMAY and hold.

▼ *Circling not authorized W of Rwy 12-30.

TOWER ★
126.85 379.3

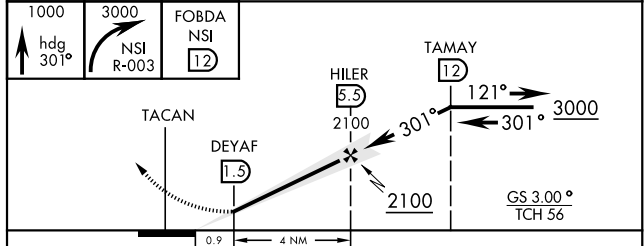
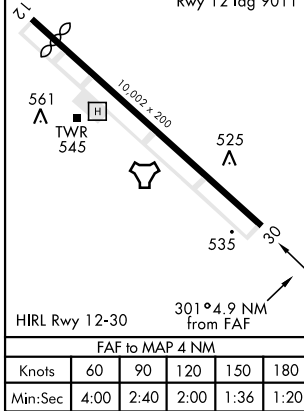


SW-3, 30 DEC 2021 to 27 JAN 2022

SW-3, 30 DEC 2021 to 27 JAN 2022

EMERG SAFE ALT 100 NM 10,900

| | |
|----------|----------|
| ELEV 506 | TDZE 506 |
|----------|----------|



| CATEGORY | A | B | C | D | E |
|-----------|----------------------|----------------------|------------------------|--------------------|---|
| S-ILS 30 | | 706-¾ | 200 | (200-¾) | |
| S-LOC 30 | | 780-1 | 274 | (300-1) | |
| CIRCLING* | 860-1 354 (400-1) | 960-1 454 (500-1) | 960-1½ 454 (500-1½) | 1060-2 554 (600-2) | |

ILS Y or LOC/DME RWY 30