

SAN NICOLAS ISLAND, CALIFORNIA

ILS Z or RNAV (GPS) RWY 30

LOC I-NSI 109.7	APCH CRS 301°	Rwy Idg 10,002
		TDZE 506
		Arprt Elev 506

AL-5162 [USN]

SAN NICOLAS ISLAND NOLF (KNSI)

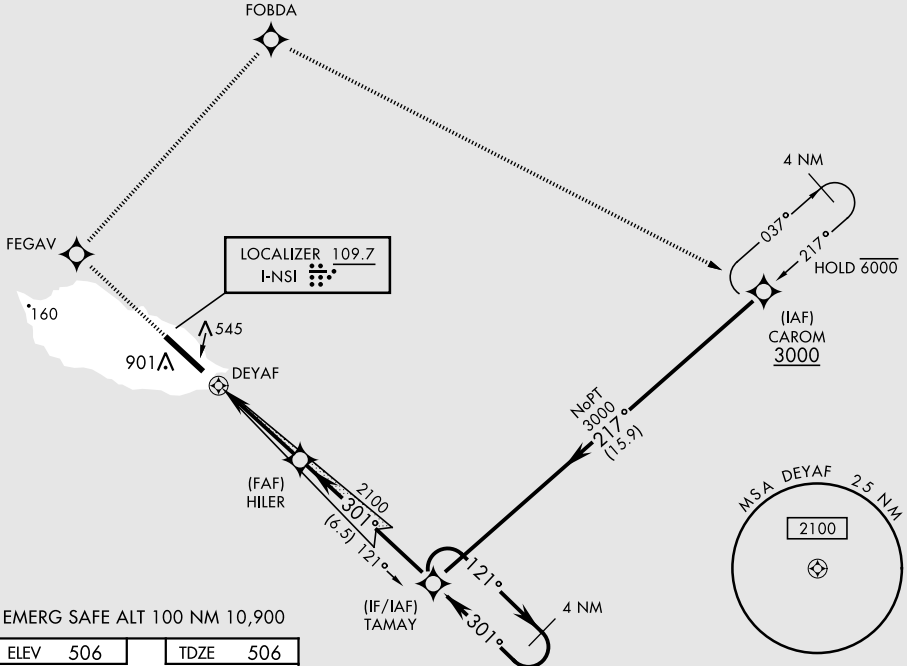
GPS required for ILS procedure. RADAR required.

† MISSED APPROACH: Climb to 3000 direct FEGAV, track 030° to FOBDA, track 105° to CAROM and hold.

▼ * Circling not authorized W of Rwy 12-30.

TOWER ★
126.85 379.3

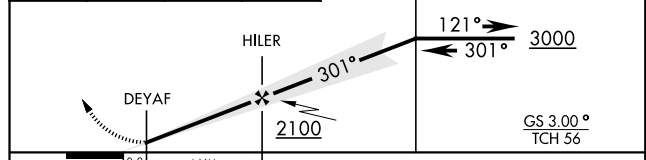
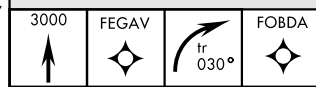
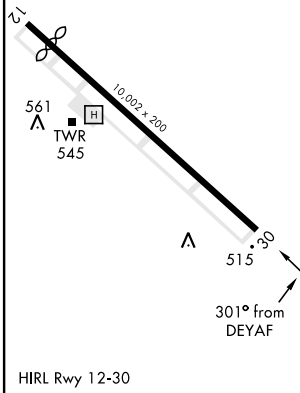
† All acft are restricted to 250 KIAS or less until FEGAV during the missed approach procedure.



EMERG SAFE ALT 100 NM 10,900

ELEV 506	TDZE 506
----------	----------

Rwy 12 Idg 9011'



CATEGORY	A	B	C	D	E
S-ILS 30	706- ³ / ₄		200	(200- ³ / ₄)	
LNAV MDA	920-1 414 (500-1)		920-1 ¹ / ₈	414	(500-1 ¹ / ₈)
C CIRCLING *	920-1 414 (500-1)	960-1 454 (500-1)	960-1 ¹ / ₂ 454 (500-1 ¹ / ₂)	1060-2 554 (600-2)	

SAN NICOLAS ISLAND, CALIFORNIA

33°14'N-119°27'W

SAN NICOLAS ISLAND NOLF (KNSI)

Amdt 5 07OCT21

ILS Z or RNAV (GPS) RWY 30

SW-3, 30 DEC 2021 to 27 JAN 2022

SW-3, 30 DEC 2021 to 27 JAN 2022