

VORTAC OOM <b>110.2</b> Chan <b>39</b>	APP CRS <b>169°</b>	Rwy ldg <b>6500</b> TDZE <b>846</b> Apt Elev <b>846</b>
--	------------------------	---

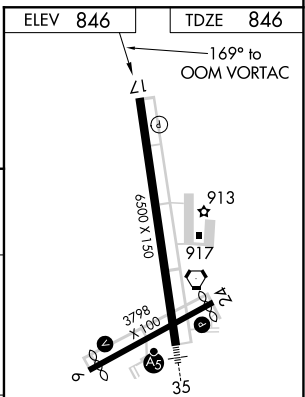
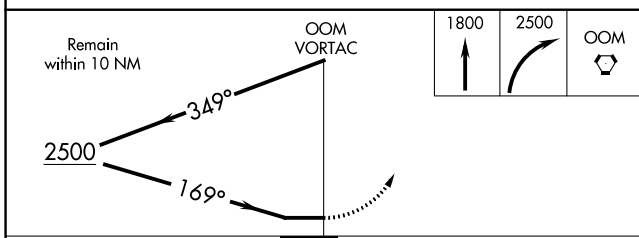
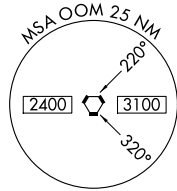
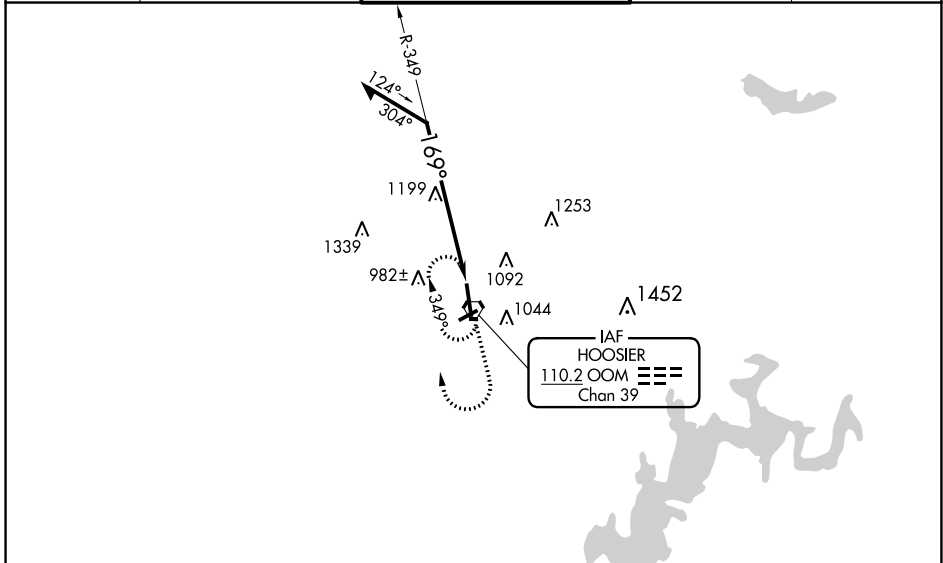
# VOR RWY 17

MONROE COUNTY (BMG)

**⚠** Helicopter visibility reduction below 3/4 SM NA. Circling to Rwy 6/24 NA at night.  
**⚠** When local altimeter setting not received use Terre Haute Rgnl altimeter setting; increase all MDA 140 feet; increase S-17 and Circling Cat C and D visibility 1/2 SM.

**MISSED APPROACH:** Climb to 1800 then climbing right turn to 2500 direct OOM VORTAC and hold.

ASOS <b>134.525</b>	HULMAN APP CON ★ <b>128.025 339.8</b>	<b>BLOOMINGTON TOWER ★</b> <b>120.775 (CTAF) 0</b>	GND CON <b>121.9</b>	UNICOM <b>122.95</b>
------------------------	--	---	-------------------------	-------------------------



CATEGORY	A	B	C	D
S-17	1560-1 714 (800-1)	1560-2 714 (800-2)	1560-2 714 (800-2)	1560-2 714 (800-2) 1/4
CIRCLING	1560-1 714 (800-1)	1560-2 714 (800-2)	1560-2 714 (800-2)	1620-2 774 (800-2) 1/2

MIRL Rwy 6-24 0  
 HIRL Rwy 17-35 0  
 REIL Rwy 17

EC-2, 30 DEC 2021 to 27 JAN 2022

EC-2, 30 DEC 2021 to 27 JAN 2022