

WAAS CH <b>86537</b> <b>W11A</b>	APP CRS <b>116°</b>	Rwy Idg TDZE <b>718</b> Apt Elev <b>722</b>
--	------------------------	---

# RNAV (GPS) RWY 11

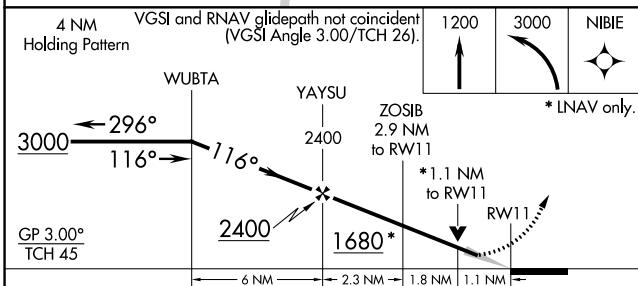
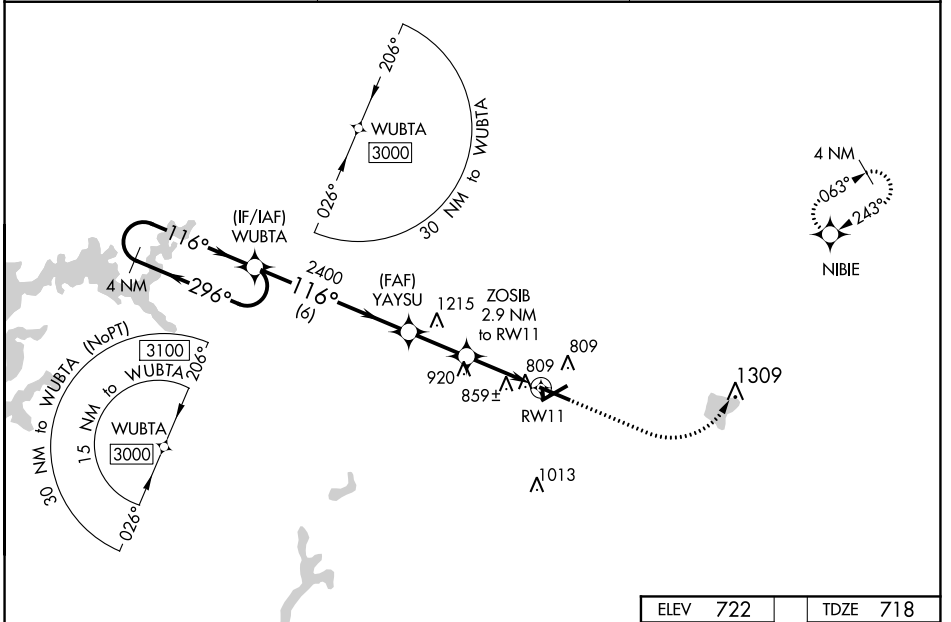
COLES COUNTY MEML (MTO)

RNP APCH.

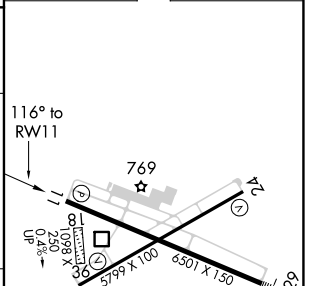
▼ When local altimeter setting not received, use Champaign/Urbana altimeter setting and increase all DA 82 feet, increase all MDA 100 feet, and increase LPV all Cats visibility  $\frac{1}{8}$  mile, LNAV/VNAV all Cats visibility  $\frac{3}{8}$  mile, LNAV Cats C and D and Circling Cat C visibility  $\frac{1}{4}$  mile, and Circling D visibility  $\frac{1}{2}$  mile. For uncompensated Baro-VNAV systems, LNAV/VNAV NA below -19°C or above 54°C. Baro-VNAV and VDP NA when using Champaign/Urbana altimeter setting. Circling NA to Rwys 18 and 36.

MISSED APPROACH: Climb to 1200 then climbing left turn to 3000 direct NIBIE and hold.

ASOS <b>118.475</b>	CHAMPAIGN APP CON ★ <b>132.85 290.225</b>	UNICOM <b>122.7 (CTAF) ☉</b>
------------------------	--	---------------------------------



ELEV 722	TDZE 718
----------	----------



CATEGORY	A	B	C	D
LPV DA	918- $\frac{3}{4}$ 200 (200- $\frac{3}{4}$ )			
LNAV/VNAV DA	1175-1 $\frac{5}{8}$ 457 (500-1 $\frac{5}{8}$ )			
LNAV MDA	1120-1	402 (400-1)	1120-1 $\frac{1}{8}$	402 (400-1 $\frac{1}{8}$ )
<b>C</b> CIRCLING	1160-1 438 (500-1)	1180-1 458 (500-1)	1240-1 $\frac{1}{2}$ 518 (600-1 $\frac{1}{2}$ )	1380-2 658 (700-2)

MIRL Rwy 6-24 ☉  
HILL Rwy 11-29 ☉  
REIL Rwys 6, 11, and 24 ☉