

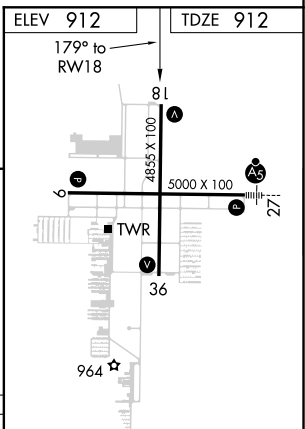
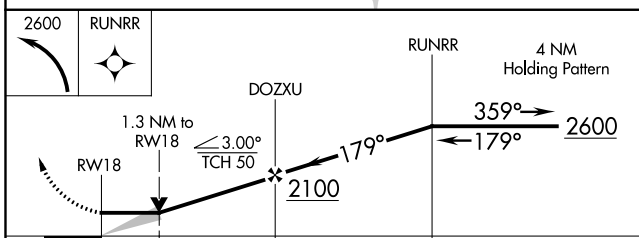
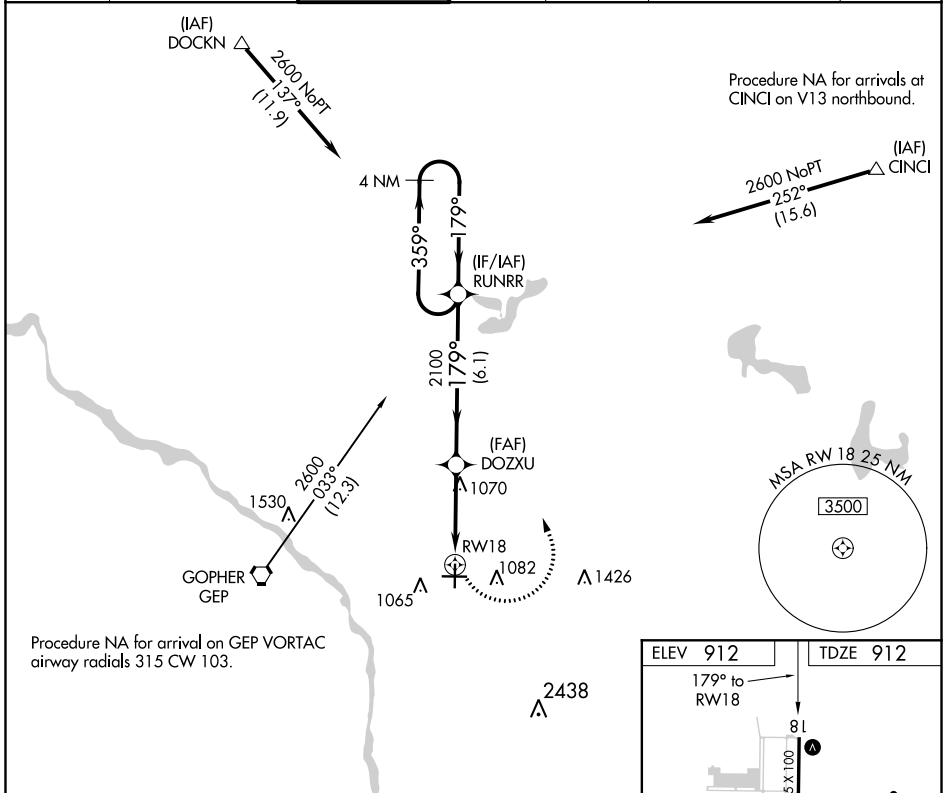
APP CRS	Rwy Idg	4855
179°	TDZE	912
	Apt Elev	912

RNAV (GPS) RWY 18

ANOKA COUNTY-BLAINE (JANES FLD) (A.N.E.)

DME/DME RNP-0.3 NA.			MISSED APPROACH: Climbing left turn to 2600 direct RUNRR and hold.			
---------------------	--	--	--	--	--	--

ATIS	MINNEAPOLIS APP CON	ANOKA TOWER*	GND CON	CLNC DEL	MINNEAPOLIS CLNC DEL	UNICOM
120.625	126.5 335.65	132.4 (CTAF) 0	121.85	121.3	121.85 (When tower closed)	122.95



CATEGORY	A	B	C	D
LNNAV MDA	1380-1 468 (500-1)	1380-1 $\frac{3}{8}$ 468 (500-1 $\frac{3}{8}$)	1380-1 $\frac{1}{2}$ 468 (500-1 $\frac{1}{2}$)	1380-1 $\frac{1}{2}$ 468 (500-1 $\frac{1}{2}$)
C CIRCLING	1400-1 488 (500-1)	1460-1 $\frac{1}{2}$ 548 (600-1 $\frac{1}{2}$)	1580-2 668 (700-2)	

- HIRL Rwy 9-27 **(1)**
- MIRL Rwy 18-36 **(1)**
- REIL Rws 9, 18 and 36 **(1)**

NC-1, 30 DEC 2021 to 27 JAN 2022

NC-1, 30 DEC 2021 to 27 JAN 2022