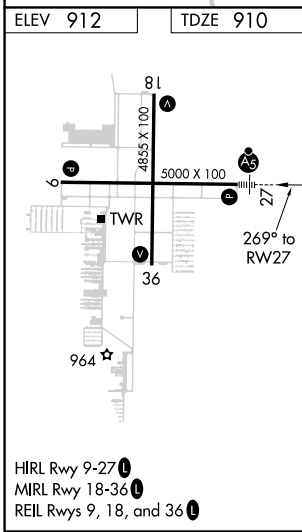
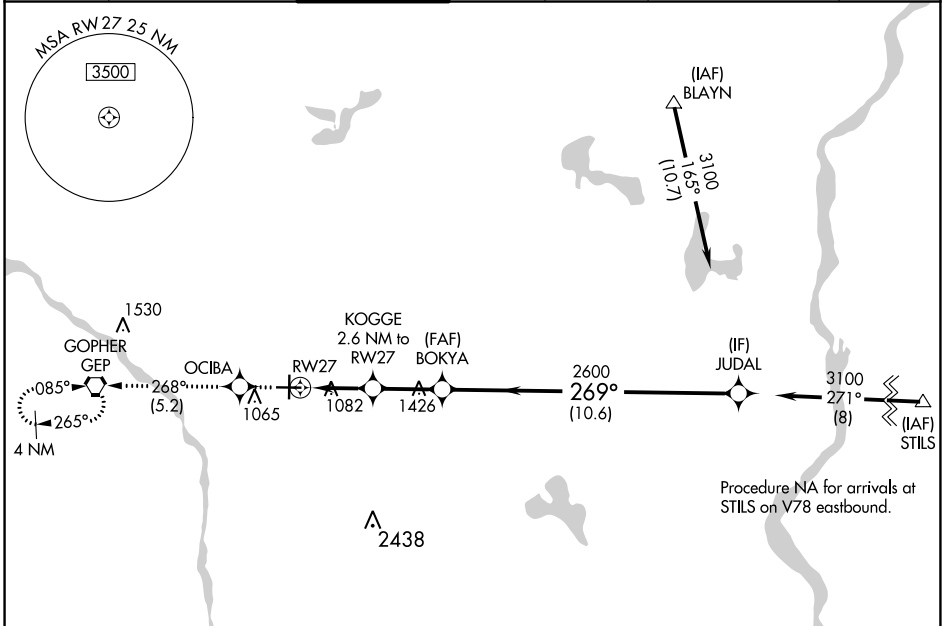


WAAS CH 78300	APP CRS 269°	Rwy Idg 5000 TDZE 910 Apt Elev 912
-------------------------	------------------------	---

RNAV (GPS) RWY 27

ANOKA COUNTY-BLAINE (JANES FLD) (A.N.E.)

RNP APCH. ▼ For uncompensated Baro-VNAV systems, LNAV/VNAV NA below -16°C or above 54°C. For inop ALS, increase LNAV/VNAV all Cats visibility to 1 3/8 SM.		MALSR 	MISSED APPROACH: Climb to 2700 direct OCIBA and track 268° to GEP VORTAC and hold.			
ATIS 120.625	MINNEAPOLIS APP CON 126.5 335.65	ANOKA TOWER* 132.4 (CTAF)	GND CON 121.85	CLNC DEL 121.3	MINNEAPOLIS CLNC DEL 121.85 (When tower closed)	UNICOM 122.95



2700	OCIBA	GEP	JUDAL	
		tr 268°		
*LNAV only.				
KOGGE 2.6 NM to RW27		BOKYA 2600		
*1.2 NM to RW27		JUDAL 3100		
RW27		2600		
1780*		GP 3.00° TCH 49		
1.2 NM		1.4 NM		2.5 NM
1.2 NM		1.4 NM		10.6 NM
CATEGORY	A	B	C	D
LPV DA	1160-1/2 250 (300-1/2)			
LNAV/VNAV DA	1371-1 461 (500-1)			
LNAV MDA	1340-1/2	430 (500-1/2)	1340-3/4 430 (500-3/4)	1340-1 430 (500-1)
CIRCLING	1400-1	488 (500-1)	1460-1 1/2 548 (600-1 1/2)	1580-2 668 (700-2)

NC-1, 30 DEC 2021 to 27 JAN 2022

NC-1, 30 DEC 2021 to 27 JAN 2022