

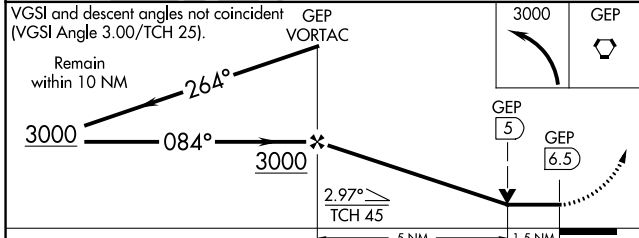
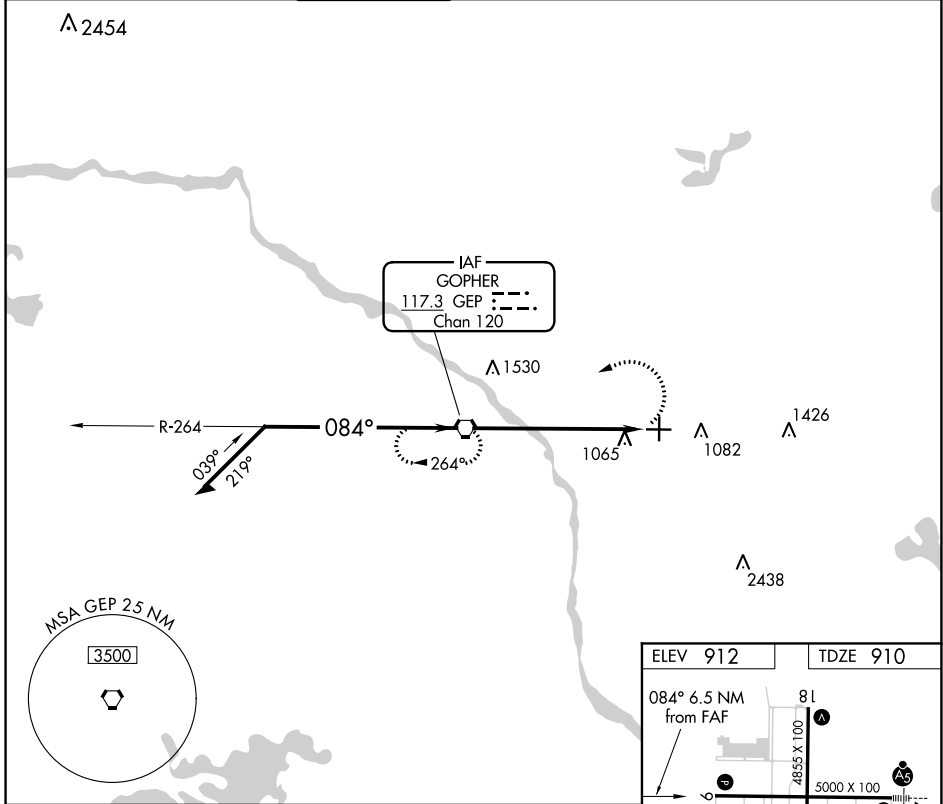
VORTAC GEP 117.3 Chan 120	APP CRS 084°	Rwy Idg TDZE Apt Elev 5000 910 912
--	------------------------	--

VOR RWY 9

ANOKA COUNTY-BLAINE (JANES FLD) (A.N.E.)

MISSED APPROACH: Climbing left turn to 3000 direct GEP VORTAC and hold.

ATIS 120.625	MINNEAPOLIS APP CON 126.5 335.65	ANOKA TOWER* 132.4 (CTAF) 0	GND CON 121.85	CLNC DEL 121.3	MINNEAPOLIS CLNC DEL 121.85 (When tower closed)	UNICOM 122.95
------------------------	--	--	--------------------------	--------------------------	--	-------------------------



ELEV 912	TDZE 910
----------	----------

Diagram details: 084° 6.5 NM from FAF, 81, 4855 X 100, 5000 X 100, 27, 36, 964, HIRL Rwy 9-27, MIRL Rwy 18-36, REIL Rws 9, 18 and 36. FAF to MAP 6.5 NM.

Knots	60	90	120	150	180
Min:Sec	6:30	4:20	3:15	2:36	2:10

CATEGORY	A	B	C	D
S-9	1400-1	490 (500-1)	1400-1 $\frac{3}{8}$ 490 (500-1 $\frac{3}{8}$)	1400-1 $\frac{1}{2}$ 490 (500-1 $\frac{1}{2}$)
C CIRCLING	1400-1	488 (500-1)	1460-1 $\frac{1}{2}$ 548 (600-1 $\frac{1}{2}$)	1580-2 668 (700-2)

NC-1, 30 DEC 2021 to 27 JAN 2022

NC-1, 30 DEC 2021 to 27 JAN 2022