

LOC I-POC <b>110.5</b>	APP CRS <b>259°</b>	Rwy Idg TDZE Apt Elev <b>4151</b> <b>1005</b> <b>1014</b>
---------------------------	------------------------	--

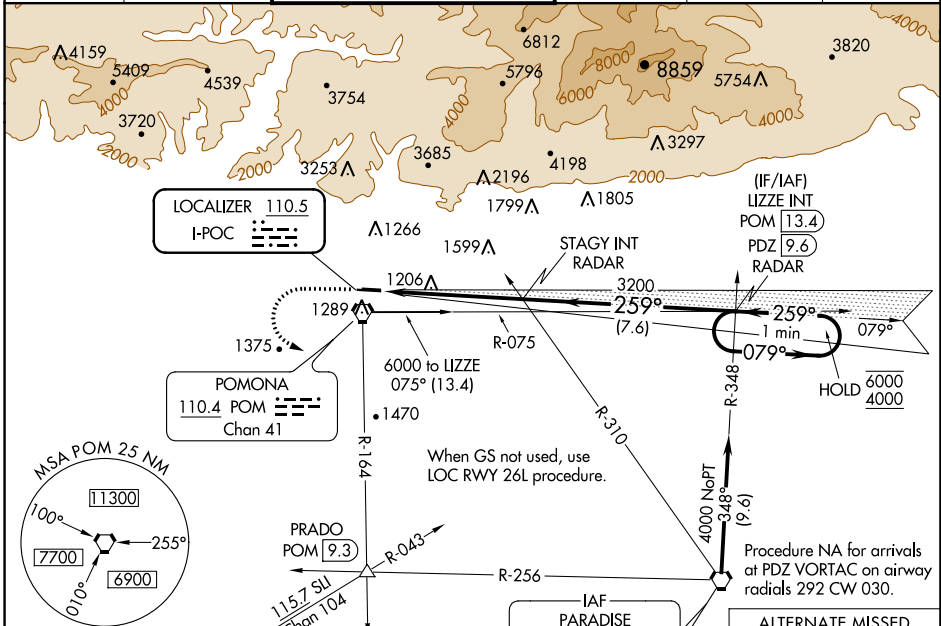
# ILS RWY 26L

BRACKETT FLD (POC)

**▼** Rwy 26L helicopter visibility reduction below 3/4 SM NA.  
**▲** When local altimeter setting not received, use Ontario Intl altimeter setting and increase DA to 1364.

MISSED APPROACH: Climb to 2100 then climbing left turn to 4000 on POM VORTAC R-164 to PRADO INT/POM 9.3 DME.

ATIS <b>124.4</b>	SOCAL APP CON <b>125.5 318.2</b>	BRACKETT TOWER* RWY 8R/26L <b>118.2</b> (CTAF)	RWY 8L/26R <b>133.3</b>	GND CON <b>125.0</b>	CLNC DEL <b>121.875</b>	UNICOM <b>122.95</b>
----------------------	-------------------------------------	--	----------------------------	-------------------------	----------------------------	-------------------------

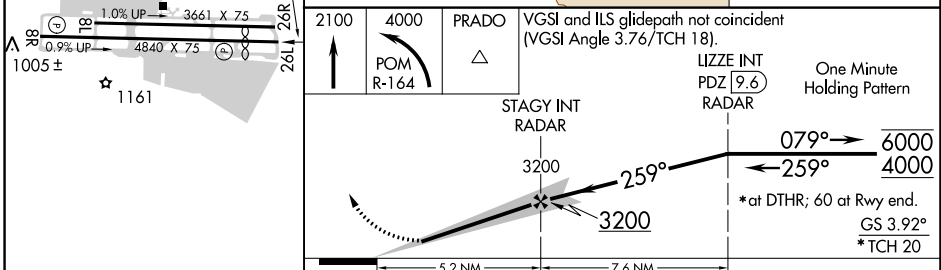


ELEV 1014	TDZE 1005
-----------	-----------

Procedure NA for arrivals at PDZ VORTAC on airway radials 292 CW 030.

ALTERNATE MISSED APCH FIX

PARADISE PDZ 112.2 Chan 59



REIL Rws 8R and 26L MIRL Rwy 8R-26L	CATEGORY	A	B	C	D
	S-ILS 26L	1332-1	327 (400-1)		NA

SW-3, 30 DEC 2021 to 27 JAN 2022

SW-3, 30 DEC 2021 to 27 JAN 2022