

LOC I-MHK <b>111.3</b>	APP CRS <b>036°</b>	Rwy Idg <b>7000</b>
		TDZE <b>1056</b>
		Apt Elev <b>1066</b>

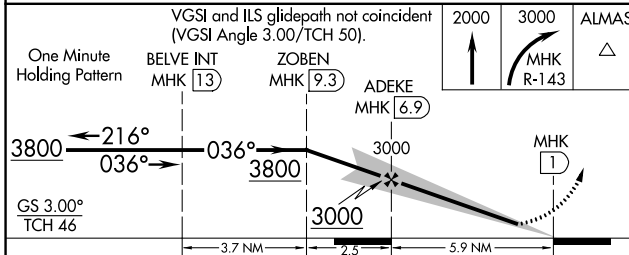
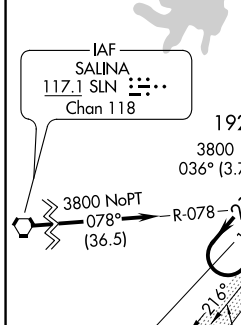
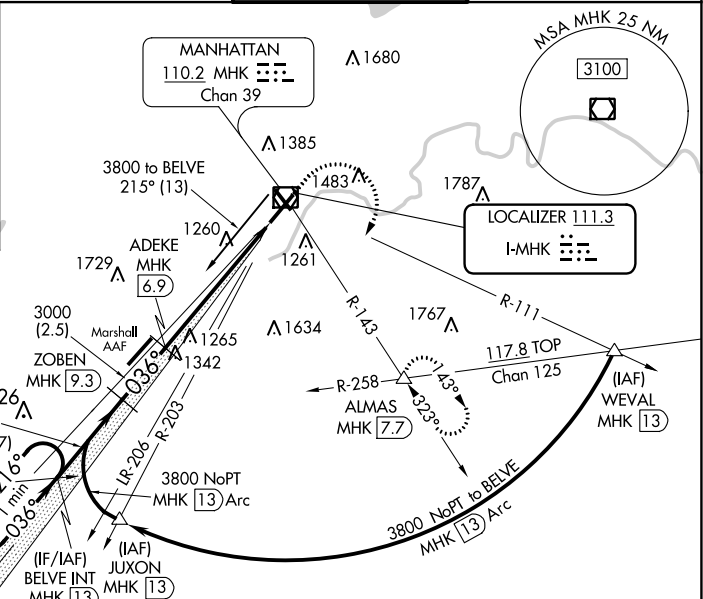
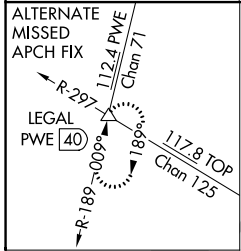
# ILS or LOC RWY 3

MANHATTAN RGNL (MHK)

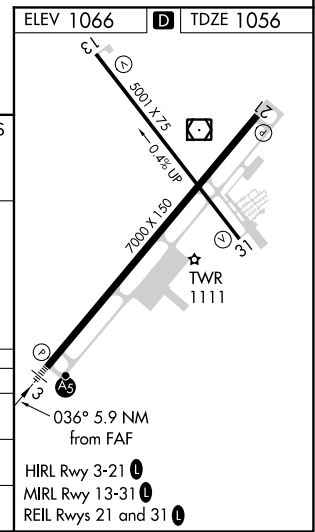
**⚠** For inop MALSRL when using Marshall AAF altimeter setting, increase S-ILS 3 all Cats visibility to 1 1/4 mile. Circling NA west of Rwy 3-21. Helicopter visibility reduction below 3/4 SM NA. When local altimeter setting not received, use Marshall AAF altimeter setting and increase all DA 16 feet and all MDA 20 feet. For inop MALSRL, increase S-LOC 3 Cats A/B visibility 1/4 mile. Inop table does not apply to S-ILS 3. DME Required.

**MALSRL**  
AS  
MISSED APPROACH: Climb to 2000 then climbing right turn to 3000 via MHK VOR/DME R-143 to ALMAS INT/MHK 7.7 DME and hold.

ASOS <b>119.075</b>	MARSHALL GCA* <b>121.25 254.35</b>	MANHATTAN TOWER* <b>118.55 (CTAF)</b>	GND CON <b>121.85</b>
------------------------	---------------------------------------	--	--------------------------



CATEGORY	A	B	C	D
S-ILS 3	1256-3/4 200 (200-3/4)			
S-LOC 3	1520-3/4 464 (500-3/4)		1520-1 464 (500-1)	
CIRCLING	1600-1 534 (600-1)	1700-1 634 (700-1)	1920-2 1/2 854 (900-2 1/2)	1920-2 3/4 854 (900-2 3/4)



NC-2, 30 DEC 2021 to 27 JAN 2022

NC-2, 30 DEC 2021 to 27 JAN 2022