

WAAS CH 53319	APP CRS 216°	Rwy Idg TDZE Apt Elev	7000 1048 1066
W21A			

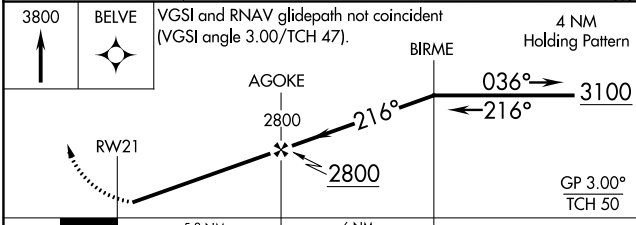
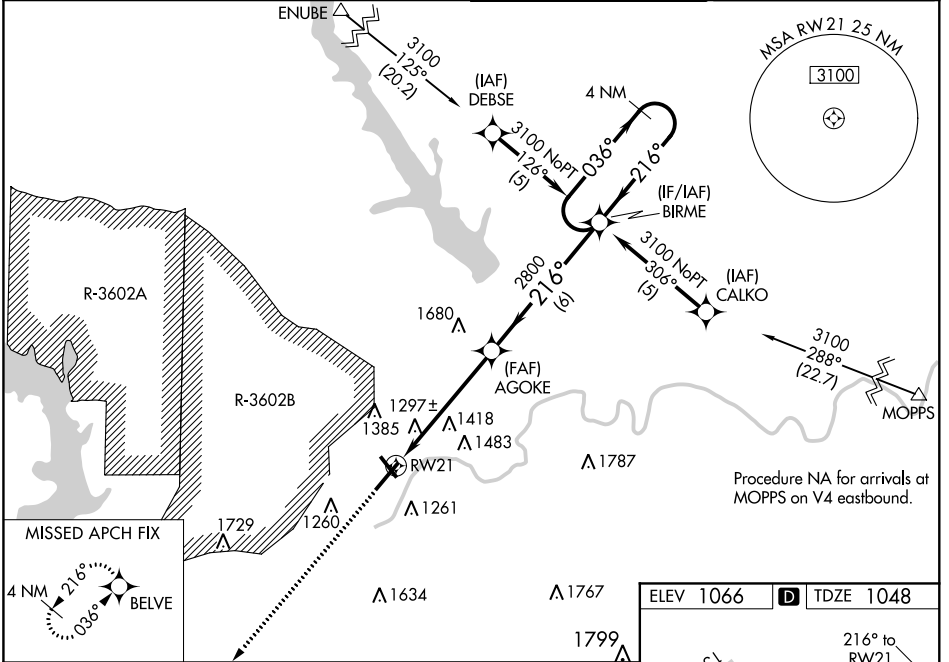
RNAV (GPS) RWY 21

MANHATTAN RGNL (MHK)

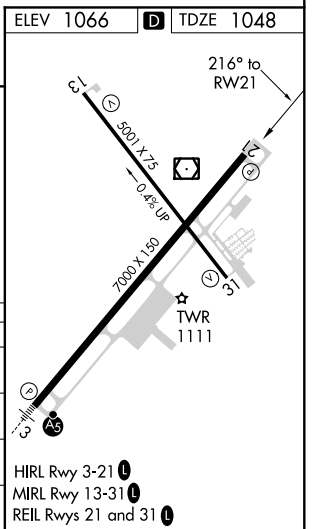
⚠ Circling NA west of Rwy 3-21. Baro-VNAV NA when using Marshall AAF altimeter setting. For uncompensated Baro-VNAV systems, LNAV/VNAV NA below -17°C (2°F) or above 46°C (114°F). DME/DME RNP-0.3 NA. When local altimeter setting not received, use Marshall AAF altimeter setting: increase LPV DA to 1264 feet, LNAV/VNAV DA to 1718 feet; increase all MDAs 20 feet and visibility Cat C 1/8 SM.

MISSED APPROACH: Climb to 3800 direct BELVE and hold.

ASOS 119.075	MARSHALL GCA* 121.25 254.35	MANHATTAN TOWER* 118.55 (CTAF) 0	GND CON 121.85
------------------------	---------------------------------------	--	--------------------------



CATEGORY	A	B	C	D
LPV DA	1248-3/4 200 (200-3/4)			
LNAV/VNAV DA	1702-2 1/2 654 (700-2 1/2)			
LNAV MDA	1720-1	672 (700-1)	1720-1 7/8 672 (700-1 7/8)	1720-2 672 (700-2)
CIRCLING	1720-1	654 (700-1)	1920-2 1/2 854 (900-2 1/2)	1920-2 3/4 854 (900-2 3/4)



NC-2, 30 DEC 2021 to 27 JAN 2022

NC-2, 30 DEC 2021 to 27 JAN 2022