

WAAS CH 73018 W03A	APP CRS 036°	Rwy Idg TDZE 7000 1056 Apt Elev 1066
---------------------------------	------------------------	--

RNAV (GPS) RWY 3

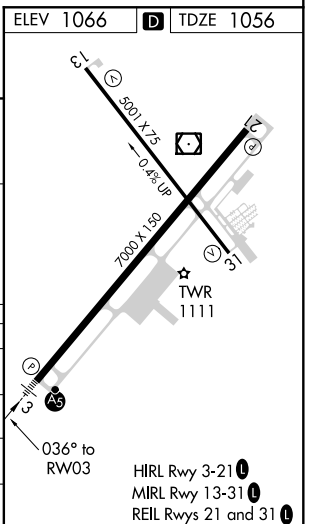
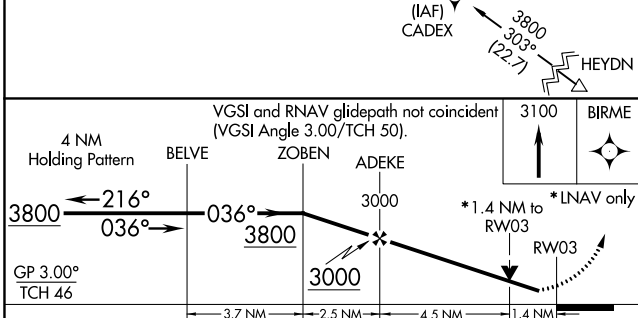
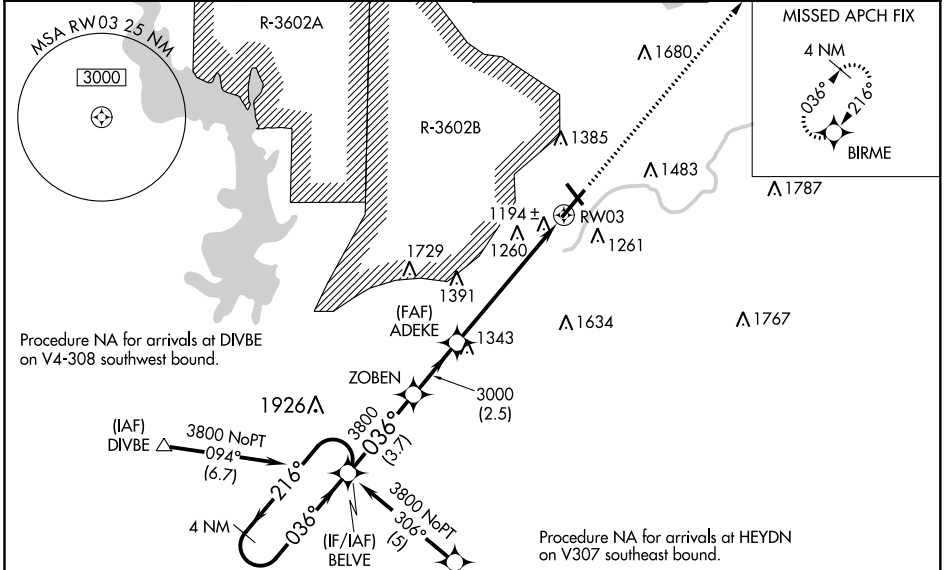
MANHATTAN RGNL (MHK)

⚠ For inoperative MALSR, increase LNAV Cats A, B visibility to 1 mile. Circling NA west of Rwy 3-21. Baro-VNAV NA when using Marshall AAF altimeter setting. For uncompensated Baro-VNAV systems, LNAV/VNAV NA below -17°C (2°F) or above 46°C (114°F). Inoperative table does not apply to LPV all Cats. DME/DME RNP-0.3 NA. Visibility reduction by helicopters NA. When local altimeter setting not received, use Marshall AAF altimeter setting and increase all DA 16 feet and all MDA 20 feet, increase LNAV Cat C visibility ¼ mile. VDP NA with Marshall AAF altimeter setting.

MALSR
A5

MISSED APPROACH:
Climb to 3100 direct BIRME and hold.

ASOS 119.075	MARSHALL GCA * 121.25 254.35	MANHATTAN TOWER * 118.55 (CTAF) 0	GND CON 121.85
------------------------	--	---	--------------------------



CATEGORY	A	B	C	D
LPV DA		1256-¾	200 (200-¾)	
LNAV/VNAV DA		1695-1¾	639 (700-1¾)	
LNAV MDA	1540-¾	484 (500-¾)		1540-1 484 (500-1)
CIRCLING	1600-1 534 (600-1)	1700-1 634 (700-1)	1920-2½ 854 (900-2½)	1920-2¾ 854 (900-2¾)

NC-2, 30 DEC 2021 to 27 JAN 2022

NC-2, 30 DEC 2021 to 27 JAN 2022

HIRL Rwy 3-21
MIRL Rwy 13-31
REIL Rws 21 and 31