

(WILSY2.WILSY) 18060

# WILSY TWO DEPARTURE (RNAV)

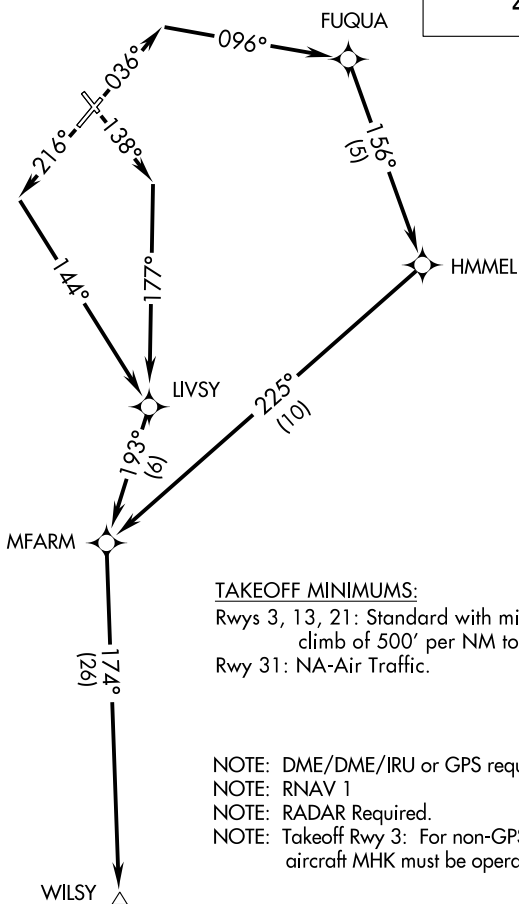
AL-5241(FAA)

MANHATTAN RGNL (MHK)

MANHATTAN, KANSAS

ASOS 119.075  
 GND CON 121.85  
 MANHATTAN TOWER ★  
 118.55 (CTAF)  
 MARSHALL AAF GCA ★  
 121.25 254.35  
 KANSAS CITY CENTER  
 127.35 257.975

**TOP ALTITUDE:  
4000**



### TAKEOFF MINIMUMS:

Rwys 3, 13, 21: Standard with minimum climb of 500' per NM to 1600.  
 Rwy 31: NA-Air Traffic.

NOTE: DME/DME/IRU or GPS required.

NOTE: RNAV 1

NOTE: RADAR Required.

NOTE: Takeoff Rwy 3: For non-GPS equipped aircraft MHK must be operational.

NOTE: Chart not to scale.

### DEPARTURE ROUTE DESCRIPTION

**TAKEOFF RWY 3:** Climb heading 036° to intercept course 096° to FUQUA, then on track 156° to HMME, then on track 225° to MFARM. thence. . .

**TAKEOFF RWY 13:** Climb heading 138° to intercept course 177° to LIVSY, then on track 193° to MFARM. thence. . .

**TAKEOFF RWY 21:** Climb heading 216° to intercept course 144° to LIVSY, then on track 193° to MFARM. thence. . .

. . . on track 174° to WILSY. Maintain 4000 or as assigned by ATC. Expect filed altitude ten minutes after departure.

**LOST COMMUNICATIONS:** Standard

# WILSY TWO DEPARTURE (RNAV)

(WILSY2.WILSY) 21JUL16

MANHATTAN, KANSAS

MANHATTAN RGNL (MHK)

NC-2, 30 DEC 2021 to 27 JAN 2022

NC-2, 30 DEC 2021 to 27 JAN 2022