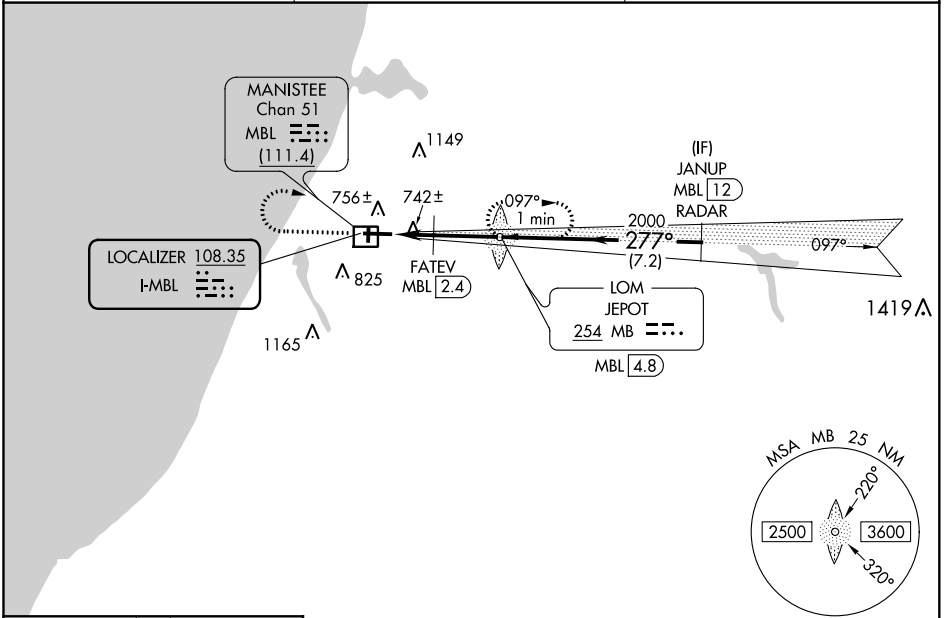


LOC I-MBL 108.35	APP CRS 277°	Rwy Idg 5501
		TDZE 621
		Apt Elev 621

ILS or LOC RWY 28

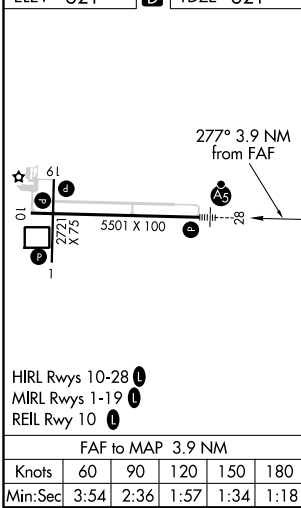
MANISTEE COUNTY/BLACKER (MBL)

ADF required for missed approach. RADAR required for procedure entry. DME or RADAR required.	MALSR 	MISSED APPROACH: Climb to 2000 then climbing right turn to 2500 direct JEPOT LOM/MBL 4.8 DME and hold.
Circling Rwy 1, 19 NA at night. For inop ALS, increase FATEV fix minimums S-LOC 28 Cat C and D visibility to 1 SM. DME from MBL DME. DME use requires simultaneous reception of I-MBL and MBL DME.		
AWOS-3PT 111.4	MINNEAPOLIS CENTER 120.85 322.35	UNICOM 122.8 (CTAF)



ELEV 621	D	TDZE 621
----------	----------	----------

2000	2500	MB LOM	VGSi and ILS glidepath not coincident (VGSi Angle 3.00/TCH 45).	
			MB LOM JEPOT MBL 4.8	JANUP MBL 12 RADAR
		FATEV MBL 2.4	1921	277° → 2800
		MBL 1.9	2000	GS 3.00° TCH 50
		MBL 0.9	2000	GS 3.00° TCH 50
CATEGORY	A	B	C	D
S-ILS 28	821-½ 200 (200-½)			
S-LOC 28	1160-½	539 (600-½)	1160-1	539 (600-1)
C CIRCLING	1160-1	1220-1	1400-2¼	1520-3
	539 (600-1)	599 (600-1)	779 (800-2¼)	899 (900-3)
FATEV FIX MINIMUMS				
S-LOC 28	1000-½	379 (400-½)	1000-¾	379 (400-¾)
C CIRCLING	1160-1	1220-1	1400-2¼	1520-3
	539 (600-1)	599 (600-1)	779 (800-2¼)	899 (900-3)



FAF to MAP 3.9 NM					
Knots	60	90	120	150	180
Min:Sec	3:54	2:36	1:57	1:34	1:18

EC-1, 30 DEC 2021 to 27 JAN 2022

EC-1, 30 DEC 2021 to 27 JAN 2022