


WAAS CH 42532 W28A	APP CRS 278°	Rwy Idg TDZE Apt Elev	5501 621 621
---------------------------------	------------------------	-----------------------------	---

RNAV (GPS) RWY 28

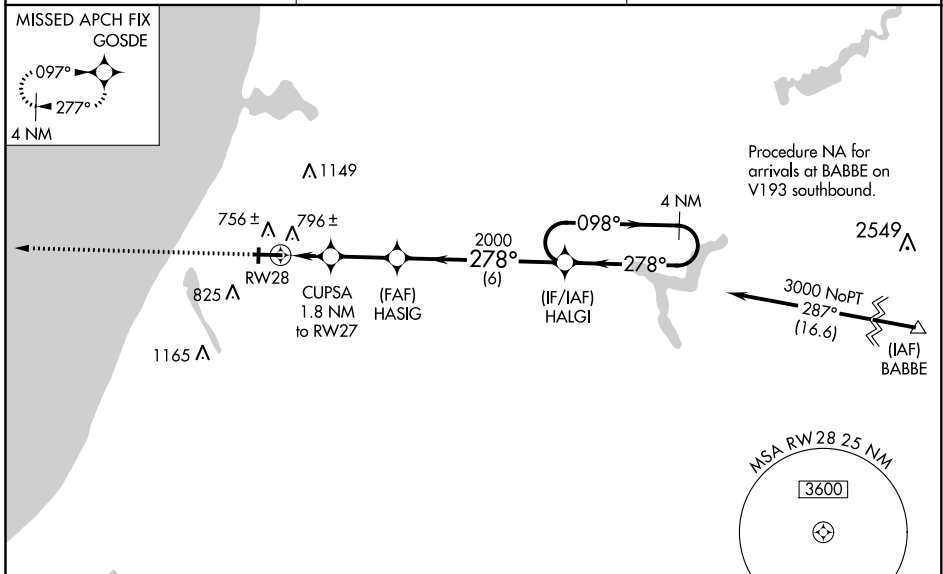
MANISTEE COUNTY/BLACKER (MBL)

⚠ Night landing: Rwy 1/19 NA. Baro-VNAV NA when using Ludington altimeter setting. For uncompensated Baro-VNAV systems, LNAV/VNAV NA below -1.6°C (4°F) or above 54°C (130°F). DME/DME RNP-0.3 NA. VDP NA with Ludington altimeter setting. When local altimeter setting not received, use Ludington altimeter setting: increase LPV DA to 871 feet; increase LNAV/VNAV DA to 1034 feet and all Cats visibility 1/8 SM; increase all MDA 60 feet and increase LNAV Cat C/D and Circling Cat C/D visibility 1/4 SM.

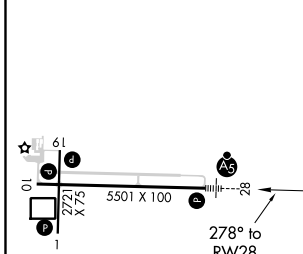
MALSRL 


MISSED APPROACH:
Climb to 2500 direct GOSDE and hold.

AWOS-3PT 111.4	MINNEAPOLIS CENTER 120.85 322.35	UNICOM 122.8 (CTAF) 0
--------------------------	--	---------------------------------



ELEV 621	D	TDZE 621
----------	----------	----------



2500 **GOSDE**  VGSI and RNAV glidepath not coincident (VGSI Angle 3.00/TCH 45). 4 NM Holding Pattern

* LNAV only.

CUPSA 1.8 NM to RWY 28

HASIG 2000

HALGI

RWY 28

* 1.2 NM to RWY 28

* 1240

2000

098° → 3000

← 278°

GP 3.00° TCH 50

— 1.2 NM — 0.6 NM — 2.4 NM — 6 NM —

CATEGORY	A	B	C	D
LPV DA		821-1/2	200 (200-1/2)	
LNAV/VNAV DA		984-3/4	363 (400-3/4)	
LNAV MDA	1060-1/2	439 (500-1/2)	1060-3/4	439 (500-3/4)
CIRCLING	1140-1 519 (600-1)	1200-1 579 (600-1)	1400-2 1/4 779 (800-2 1/4)	1500-2 3/4 879 (900-2 3/4)

HIRL Rws 10-28 **0**

MIRL Rws 1-19 **0**

REL Rwy 10 **0**

EC-1, 30 DEC 2021 to 27 JAN 2022

EC-1, 30 DEC 2021 to 27 JAN 2022