

VOR ELA 116.4 Chan 111	APP CRS 177°	Rwy Idg TDZE Apt Elev	4280 184 184
-------------------------------------	------------------------	-----------------------------	---

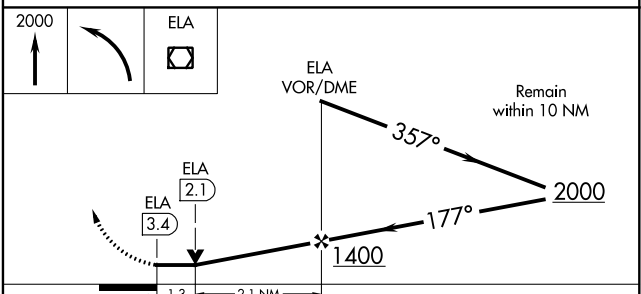
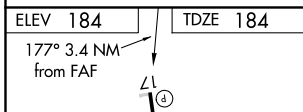
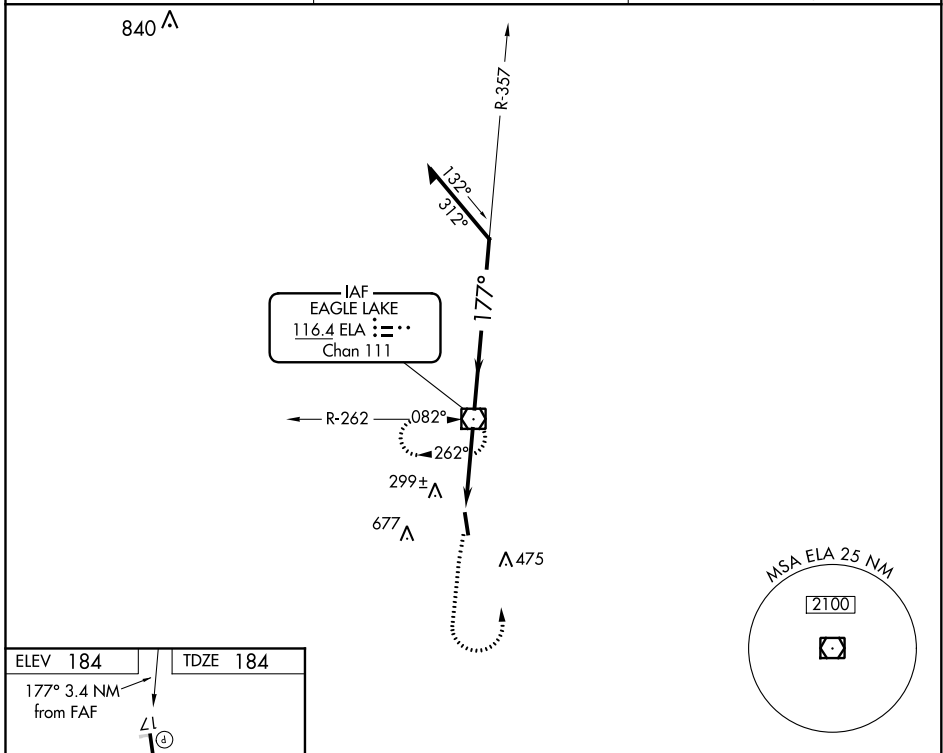
VOR RWY 17

EAGLE LAKE (ELA)

▼ Circling Rwy 35 NA at night. Rwy 17 helicopter visibility reduction below 3/4 SM NA.
▲ NA VDP NA when using Wharton altimeter setting. When local altimeter setting not received, use Wharton altimeter setting and increase all MDA 80 feet and S-17 and Circling Cat C visibility 1/4 SM.

MISSED APPROACH: Climb to 2000, then left turn direct ELA VOR/DME and hold.

AWOS-3PT 128.475	HOUSTON APP CON 124.225 306.975	CTAF 122.9
----------------------------	---	----------------------



MIRL Rwy 17-35 **●**

FAF to MAP 3.4 NM

Knots	60	90	120	150	180
Min:Sec	3:24	2:16	1:42	1:22	1:08

CATEGORY	A	B	C	D
S-17	660-1	476 (500-1)	660-1 3/8 476 (500-1 3/8)	NA
CIRCLING	860-1	676 (700-1)	1040-2 1/2 856 (900-2 1/2)	NA

SC-5, 30 DEC 2021 to 27 JAN 2022

SC-5, 30 DEC 2021 to 27 JAN 2022