

WAAS CH <b>97639</b> <b>W17A</b>	APP CRS <b>170°</b>	Rwy Idg <b>4372</b> TDZE <b>456</b> Apt Elev <b>464</b>
--	------------------------	---

# RNAV (GPS) RWY 17

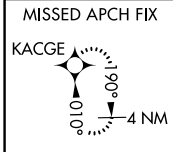
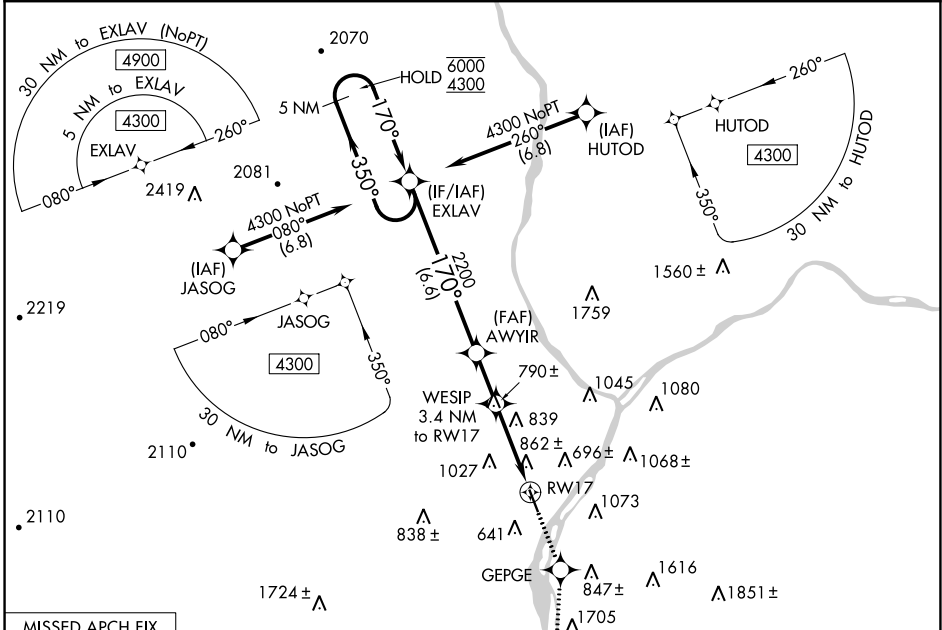
PENN VALLEY (SE/G)

RNP APCH

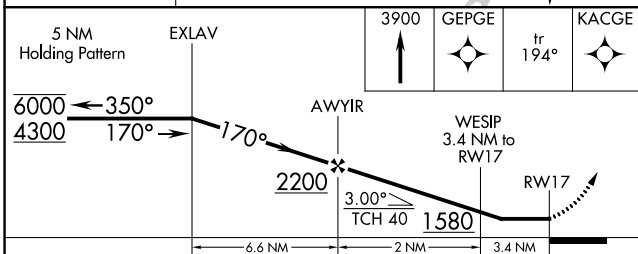
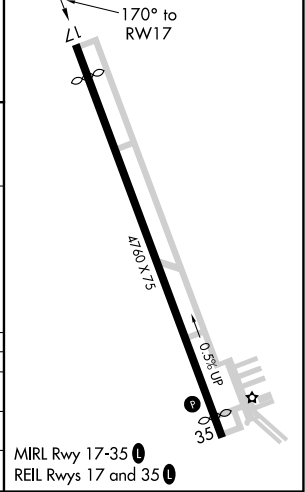
**▼** Rwy 17 helicopter visibility reduction below 1 SM NA. Straight-in Rwy 17  
**▲** NA at night, Circling Rwy 17 NA at night. When Circling to Rwy 35 at night,  
**☉** -15°C operational VGSI required, remain on or above VGSI glidepath until threshold.

**MISSED APPROACH:** Climb to 3900  
 direct GEPGE and on track 194° to  
 KACGE and hold, continue  
 climb-in-hold to 3900.

ASOS <b>123.975</b>	HARRISBURG APP CON <b>118.25 269.45</b>	UNICOM <b>122.7 (CTAF) ☉</b>
------------------------	--	---------------------------------



ELEV <b>464</b>	TDZE <b>456</b>
-----------------	-----------------



CATEGORY	A	B	C	D
LP MDA	1200-1 744 (800-1)	1200-1¼ 744 (800-1¼)	1200-2	744 (800-2)
LNAV MDA	1260-1 804 (800-1)	1260-1¼ 804 (800-1¼)	1260-2½	804 (800-2½)
<b>☉</b> CIRCLING	1400-1¼	936 (1000-1¼)	1420-3 956 (1000-3)	1600-3 1136 (1200-3)

NE-4, 30 DEC 2021 to 27 JAN 2022

NE-4, 30 DEC 2021 to 27 JAN 2022