

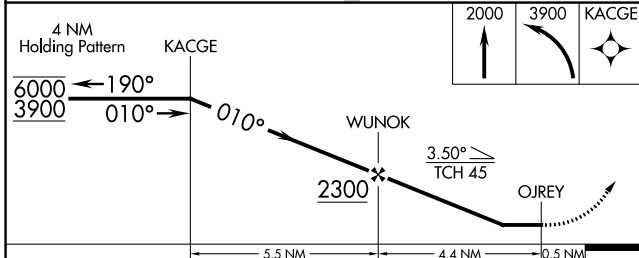
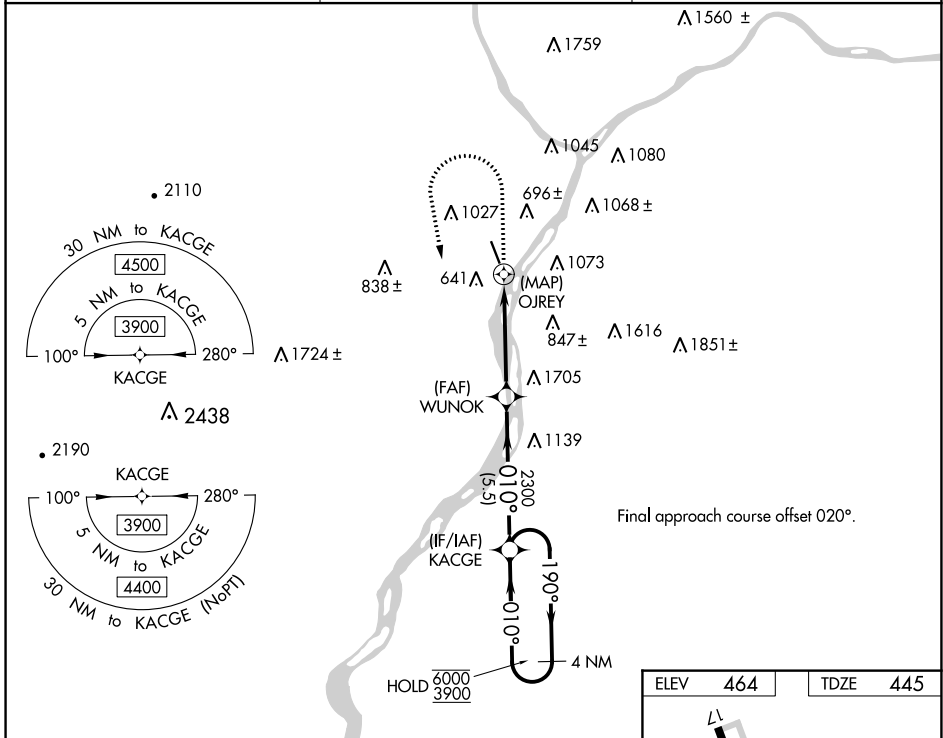
WAAS CH <b>49139</b> W35A	APP CRS <b>010°</b>	Rwy Idg TDZE Apt Elev	<b>4510</b> <b>445</b> <b>464</b>
---------------------------------	------------------------	-----------------------------	---

# RNAV (GPS) RWY 35

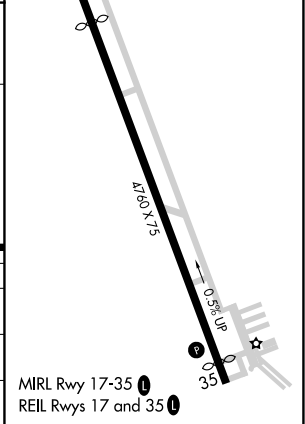
PENN VALLEY (SE/G)

RNP APCH.	<p>⚠ Circling Rwy 17 NA at night. Rwy 35 helicopter visibility reduction below 1 SM NA. Straight-In Rwy 35 at night, operational VGSI required, remain on or above VGSI glidepath until threshold.</p> <p>❄ -15°C</p>	<p>MISSED APPROACH: Climb to 2000 then climbing left turn to 3900 direct KACGE and hold.</p>
-----------	---	--

ASOS <b>123.975</b>	HARRISBURG APP CON <b>118.25 269.45</b>	UNICOM <b>122.7 (CTAF) 0</b>
------------------------	--	---------------------------------



ELEV	464	TDZE	445
------	-----	------	-----



CATEGORY	A	B	C	D
LP MDA	1200-1 755 (800-1)	1200-1½ 755 (800-1½)	1200-2	755 (800-2)
LNAV MDA	1840-1½ 1395 (1400-1½)	1840-1½ 1395 (1400-1½)	1840-3	1395 (1400-3)
<b>C</b> CIRCLING	1840-1½ 1376 (1400-1½)	1840-1½ 1376 (1400-1½)	1840-3	1376 (1400-3)

NE-4, 30 DEC 2021 to 27 JAN 2022

NE-4, 30 DEC 2021 to 27 JAN 2022