

WAAS CH <b>86516</b> <b>W04A</b>	APP CRS <b>045°</b>	Rwy Idg TDZE Apt Elev	<b>3812</b> <b>826</b> <b>826</b>
--	------------------------	-----------------------------	---

# RNAV (GPS) RWY 4

CLINTONVILLE MUNI (CLI)

RNP APCH.

▼ For uncompensated Baro-VNAV systems, LNAV/VNAV NA below -16°C or above 54°C. Rwy 4 helicopter visibility reduction below 3/4 SM NA. Circling Rwy 14 NA at night. Circling NA to Rwys 9 and 27.

MISSED APPROACH:  
Climb to 3000 direct  
COPUV and hold.

AWOS-3  
**120.675**

GREEN BAY APP CON ★  
**126.3 338.2**

UNICOM  
**122.8 (CTAF) ①**

▲  
1540

▲  
1294

▲  
976

▲  
1020

▲  
970±

▲  
987±

▲  
1153

(IAF)  
IPUCO

3000  
208° (5.1)

BIPID

2500  
045° (5.9)

(FAF)  
ARNDT

VUPLE  
2.5 NM to  
RW04

(IF/IAF)  
HIDEV

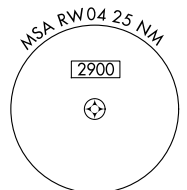
045°

225°

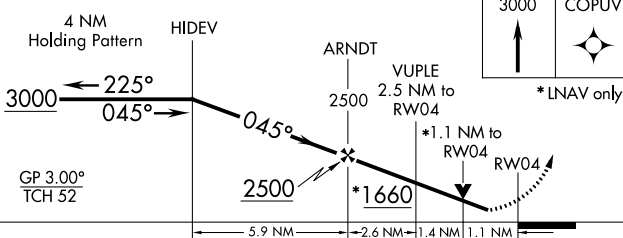
4 NM

3000 NoPT  
320° (10.6)

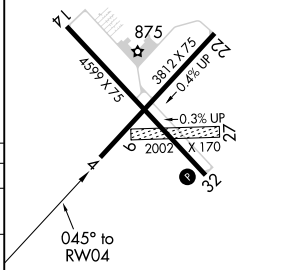
(IAF)  
EYITI



ELEV 826	TDZE 826
----------	----------



CATEGORY	A	B	C	D
LPV DA	1076-1	250 (300-1)		NA
LNAV/VNAV DA	1229-1 3/8	403 (500-1 3/8)		NA
LNAV MDA	1220-1	394 (400-1)		NA
<b>C</b> CIRCLING	1340-1	514 (600-1)		NA



REIL Rwy 32 ①  
MIRL Rws 4-22 and 14-32 ①

EC-3, 30 DEC 2021 to 27 JAN 2022

EC-3, 30 DEC 2021 to 27 JAN 2022