

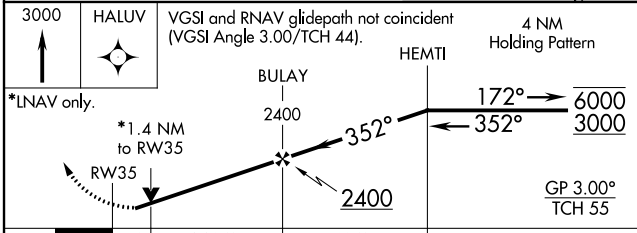
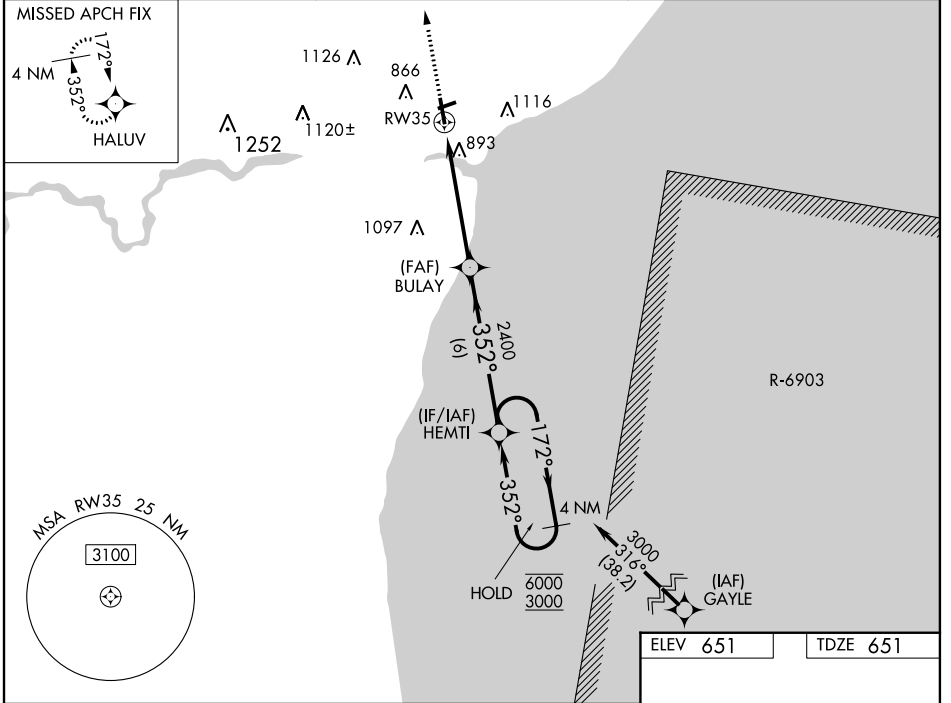
WAAS CH <b>82611</b> <b>W35A</b>	APP CRS <b>352°</b>	Rwy Idg TDZE Apt Elev	<b>5001</b> <b>651</b> <b>651</b>
--	------------------------	-----------------------------	---

# RNAV (GPS) RWY 35

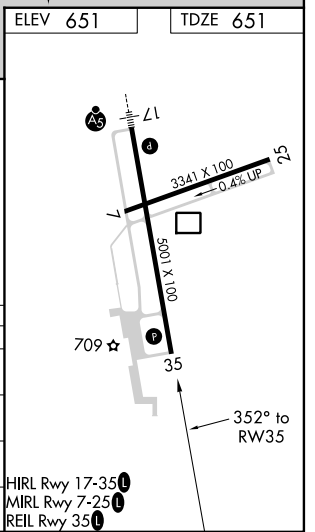
MANITOWOC COUNTY (MTW)

RNP APCH.	MISSED APPROACH: Climb to 3000 direct HALUV and hold.
-----------	---

AWOS-3PT <b>123.775</b>	GREEN BAY APP CON ★ <b>120.2 338.2</b>	UNICOM <b>122.8 (CTAF) L</b>
----------------------------	---	---------------------------------



CATEGORY	A	B	C	D
LPV DA		957-7/8	306 (400-7%)	
RNAV/VNAV DA		1199-15/8	548 (600-1%)	
RNAV MDA	1160-1	509 (600-1)	1160-13/8	509 (600-13%)
<b>C</b> CIRCLING	1200-1	549 (600-1)	1420-2 1/4 769 (800-2 1/4)	1480-2 3/4 829 (900-2 3/4)



EC-3, 30 DEC 2021 to 27 JAN 2022

EC-3, 30 DEC 2021 to 27 JAN 2022