

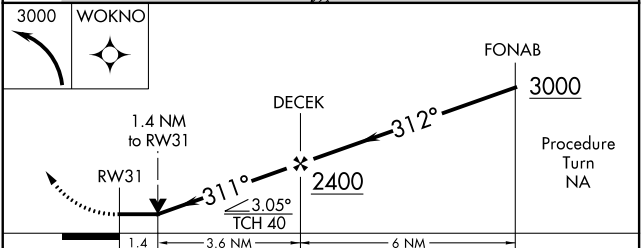
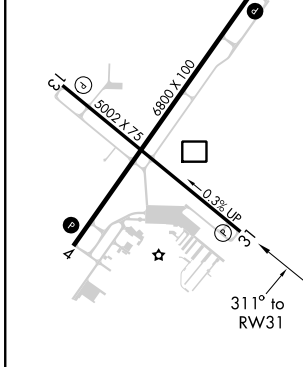
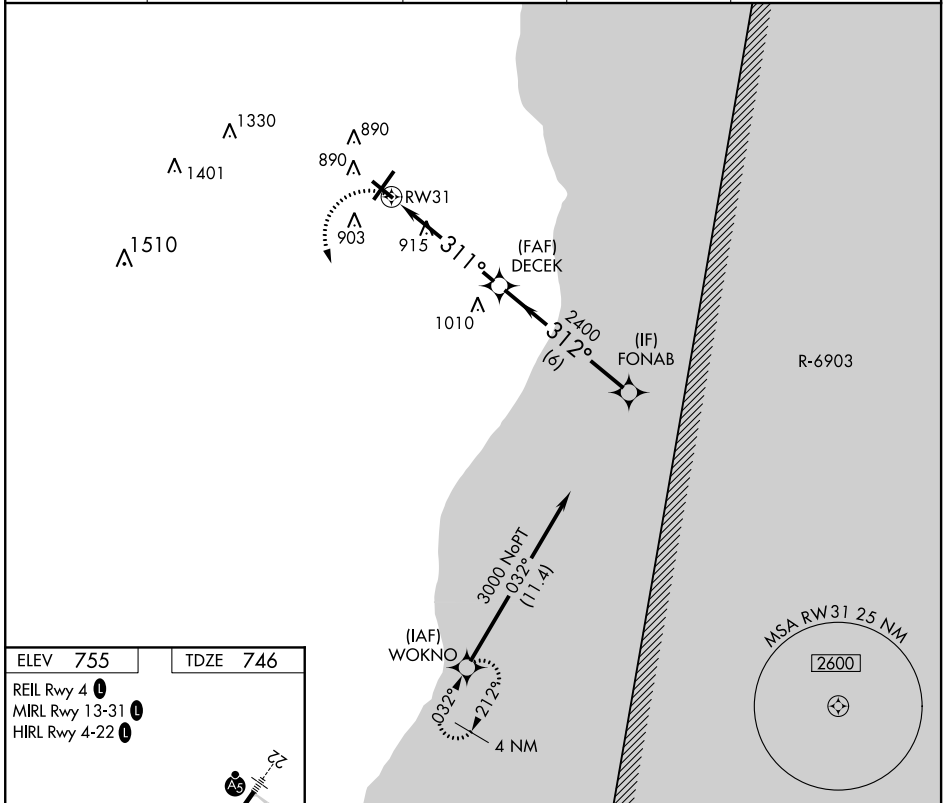
APP CRS <b>311°</b>	Rwy Idg <b>5002</b>
	TDZE <b>746</b>
	Apt Elev <b>755</b>

# RNAV (GPS) RWY 31

SHEBOYGAN COUNTY MEML (SBM)

RNP APCH.	MISSED APPROACH: Climbing left turn to 3000 direct WOKNO and hold.
Rwy 31 helicopter visibility reduction below 3/4 SM NA.	

ASOS <b>118,425</b>	MILWAUKEE APP CON <b>127.375 263.075</b>	GCO <b>121.725</b>	CLNC DEL <b>127.375</b>	UNICOM <b>122.7</b> (CTAF)
------------------------	---	-----------------------	----------------------------	-------------------------------



CATEGORY	A	B	C	D
LNAV MDA	1220-1	474 (500-1)	1220-1 1/4 474 (500-1 1/4)	1220-1 1/2 474 (500-1 1/2)
CIRCLING	1200-1 445 (500-1)	1220-1 465 (500-1)	1240-1 1/2 485 (500-1 1/2)	1360-2 605 (700-2)

EC-3, 30 DEC 2021 to 27 JAN 2022

EC-3, 30 DEC 2021 to 27 JAN 2022