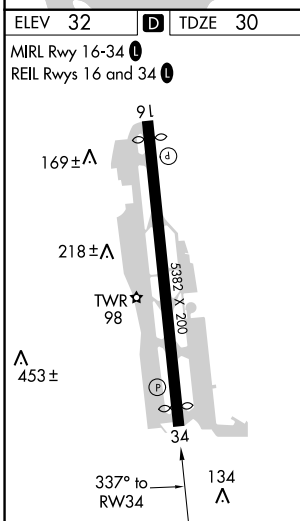
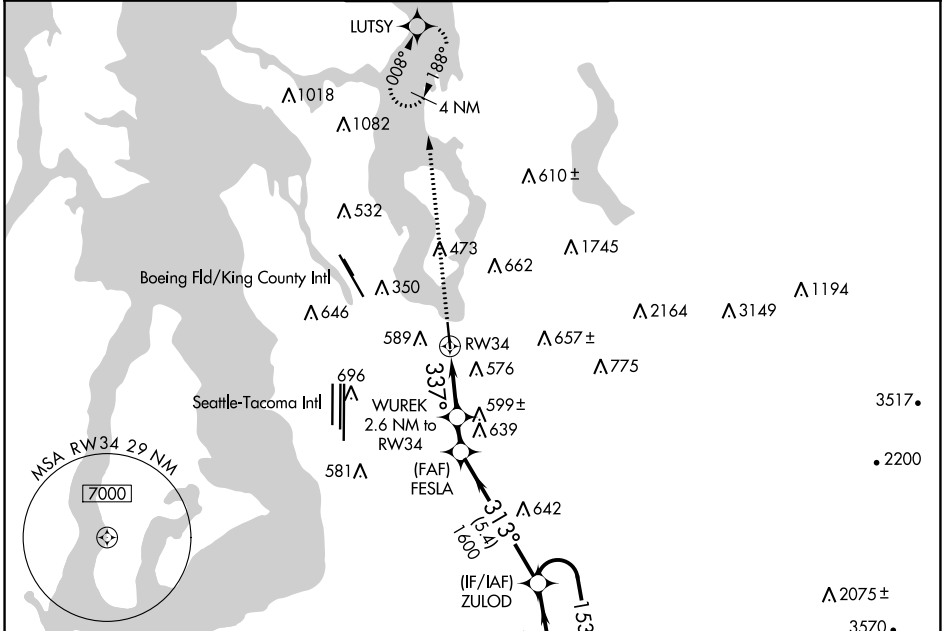


APP CRS 337°	Rwy Idg 4742
	TDZE 30
	Apt Elev 32

RNAV (GPS) RWY 34

RENTON MUNI (R.N.T.)

RNP APCH.		MISSED APPROACH: Climb to 3000 direct LUTSY and hold.		
<p>▽ Circling NA west of Rwy 16-34. Rwy 34 helicopter visibility reduction below 1 SM NA. Straight-in Rwy 34 at night, Circling Rwy 34 at night, operational VGSI required, remain on or above VGSI glidepath until threshold.</p>				
ATIS 126.95	SEATTLE APP CON 119.2 284.7	RENTON TOWER★ 124.7 (CTAF) 0 256.9	GND CON 121.6 256.9	UNICOM 122.95



ELEV 32	D	TDZE 30		
MIRL Rwy 16-34 Ⓛ				
REIL Rwy 16 and 34 Ⓛ				
<p>3000 LUTSY</p> <p>WUREK 2.6 NM to RW34 $\leq 3.75^\circ$ TCH 56</p> <p>FESLA</p> <p>ZULOD 4 NM Holding Pattern</p> <p>1100 1600 333° 153° 4000 2200</p> <p>2.6 NM 1.3 NM 5.4 NM</p>				
CATEGORY	A	B	C	D
LNAV MDA	860-1 830 (900-1)	860-1¼ 830 (900-1¼)	880-2½ 850 (900-2½)	NA
C CIRCLING	860-1¼ 828 (900-1¼)	920-1¼ 888 (900-1¼)	1000-3 968 (1000-3)	NA

NW-1, 30 DEC 2021 to 27 JAN 2022

NW-1, 30 DEC 2021 to 27 JAN 2022