

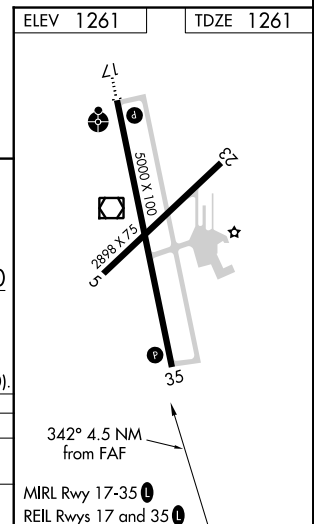
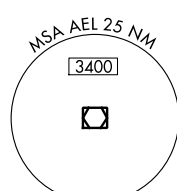
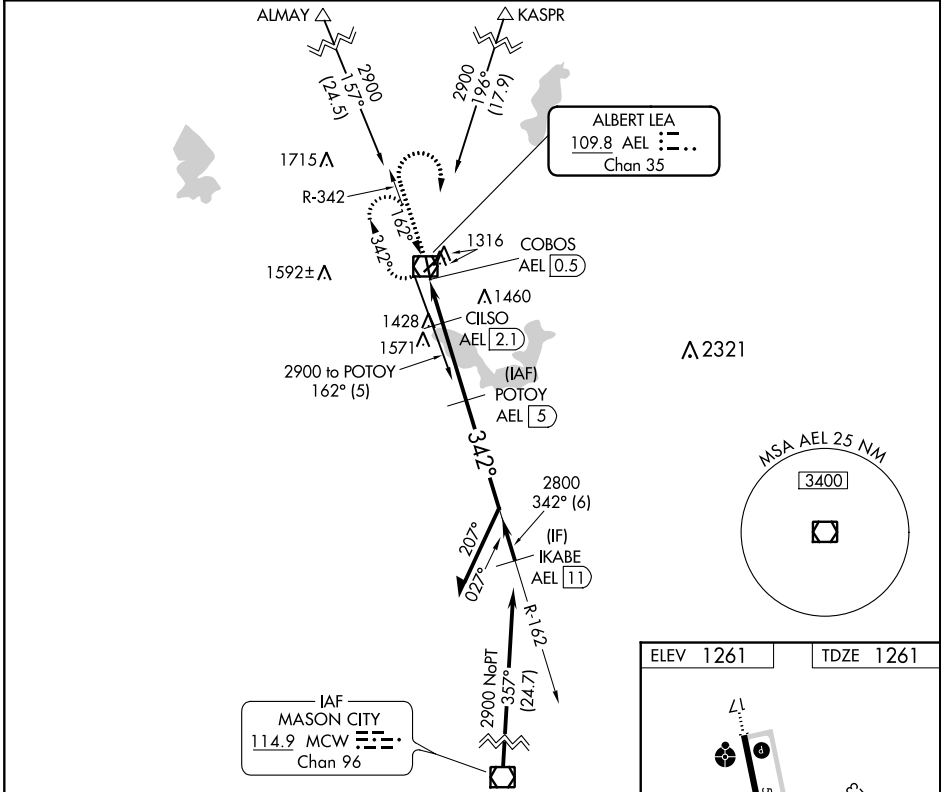
VOR/DME AEL	APP CRS	Rwy Idg	<b>5000</b>
<b>109.8</b>	<b>342°</b>	TDZE	<b>1261</b>
Chan <b>35</b>		Apt Elev	<b>1261</b>

# VOR RWY 35

ALBERT LEA MUNI (AEL)

DME required.	MISSED APPROACH: Climb to 2500 then climbing right turn to 2900 direct AEL VOR/DME and hold.
<p>▼ Circling Rwy 5, 23 NA at night. Rwy 35 helicopter visibility reduction below 3/4 SM NA.</p>	

AWOS-3 <b>109.8</b>	ROCHESTER APP CON * <b>119.8 251.125</b>	UNICOM <b>123.0 (CTAF) 0</b>
------------------------	---	---------------------------------



2500	2900	AEL	POTOTOY AEL [5]	Remain within 10 NM
↑	↷	☐		
CILSO AEL [2.1]				
COBOS AEL [0.5]	1880	2800	2900	VGSI and descent angles not coincident (VGSI Angle 3.00/TCH 30).
↶	↷	↷	↷	
1.6 NM	2.9 NM			
CATEGORY	A	B	C	D
S-35	1740-1	479 (500-1)	1740-1 3/8	479 (500-1 3/8)
CIRCLING	1780-1	519 (600-1)	1780-1 1/2	1820-2 559 (600-2)

NC-1, 30 DEC 2021 to 27 JAN 2022

NC-1, 30 DEC 2021 to 27 JAN 2022