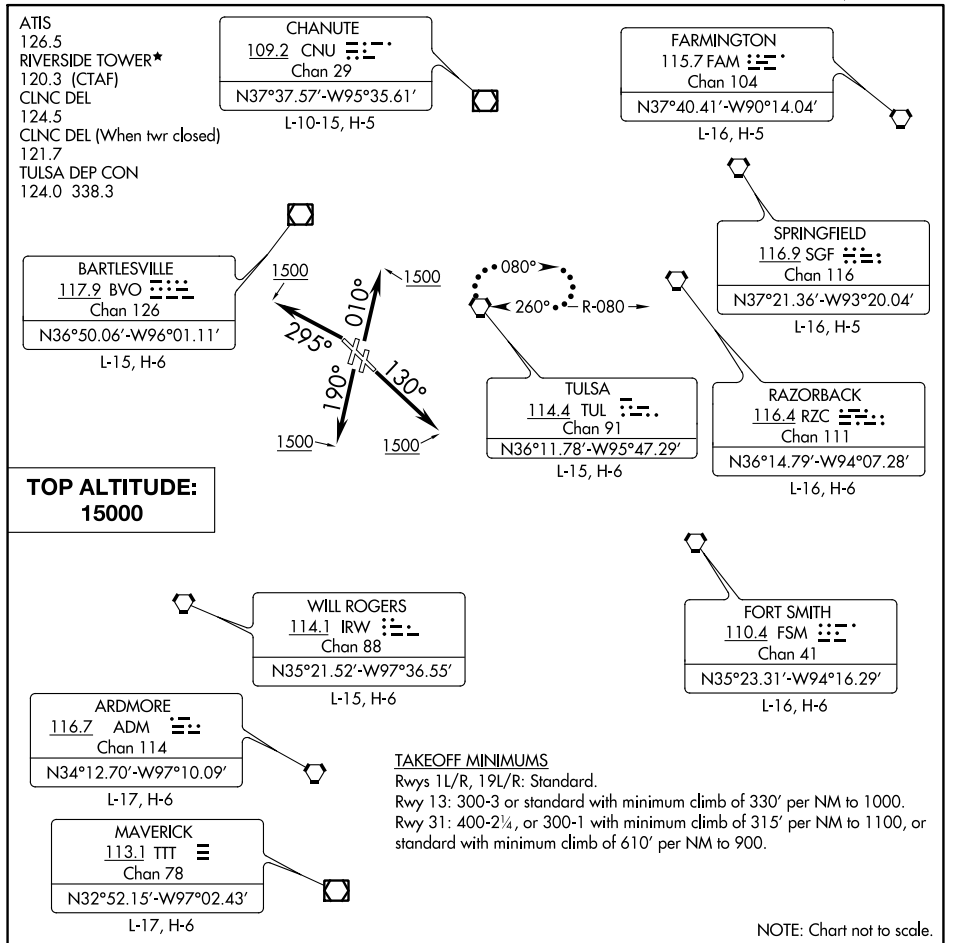


TULSA NINE DEPARTURE



SC-1, 30 DEC 2021 to 27 JAN 2022

SC-1, 30 DEC 2021 to 27 JAN 2022

DEPARTURE ROUTE DESCRIPTION

TAKEOFF RUNWAYS 1L/R: Climb on heading 010° to 1500, thence. . . .

TAKEOFF RUNWAY 13: Climb on heading 130° to 1500, thence. . . .

TAKEOFF RUNWAYS 19L/R: Climb on heading 190° to 1500, thence. . . .

TAKEOFF RUNWAY 31: Climb on heading 295° to 1500, thence. . . .

. . . continue on assigned heading for RADAR vectors to assigned route, maintain 15000 or assigned lower altitude, expect further clearance to filed altitude 10 minutes after departure.

LOST COMMUNICATIONS: Proceed to and hold east of TUL VORTAC on the 080° radial. Climb to 15000 feet or lower requested altitude, then proceed on course on filed route. Climb to requested altitude when established on course.