

WAAS CH 77731 W02A	APP CRS 018°	Rwy Idg TDZE Apt Elev	5500 1018 1021
--	------------------------	-----------------------------	---

RNAV (GPS) RWY 2

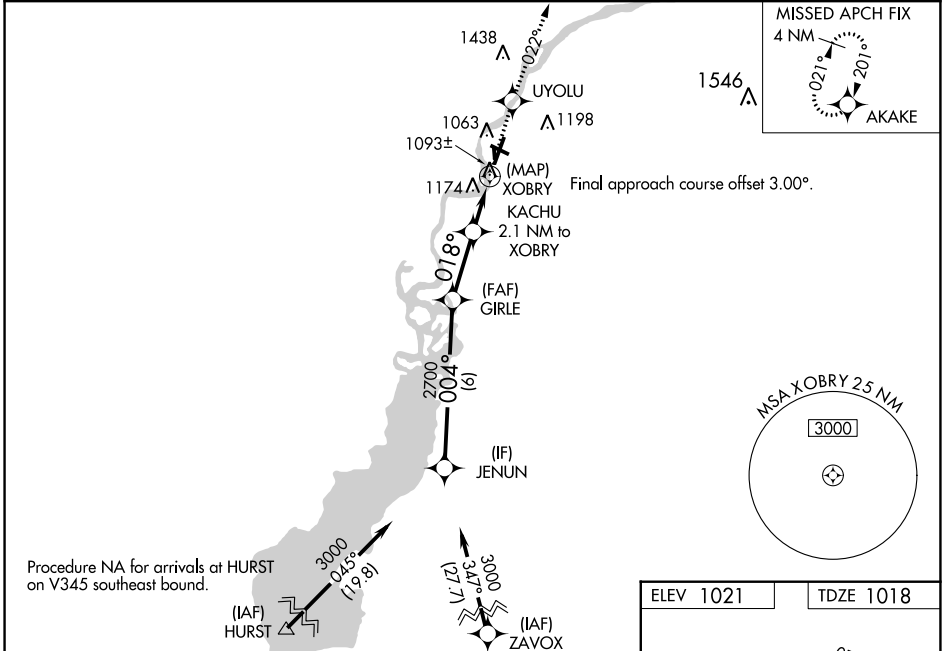
ALEXANDER FIELD SOUTH WOOD COUNTY (ISW)

RNP APCH.

⚠ Circling NA to Rwys 18 and 36. Circling Rwy 20, 30 NA at night. Baro-VNAV and VDP NA when using Stevens Point altimeter setting. Rwy 2 helicopter visibility reduction below $\frac{3}{4}$ SM NA. For uncompensated Baro-VNAV systems, LNAV/VNAV NA below -17°C or above 54°C. When local altimeter setting not received, use Stevens Point altimeter setting; increase LPV DA to 1351 feet; increase LNAV/VNAV DA to 1546 feet and all visibilities $\frac{1}{8}$ SM; increase all MDAs 60 feet, LNAV Cat C and D visibilities $\frac{1}{8}$ SM and Circling Cat C and D visibilities $\frac{1}{4}$ SM.

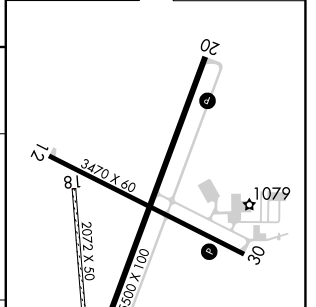
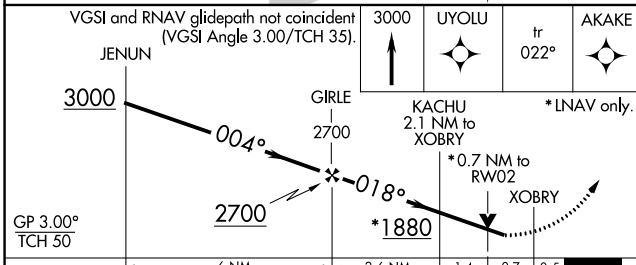
MISSED APPROACH:
Climb to 3000 direct UYOLU and on track 022° to AKAKE and hold.

ASOS 126.575	MINNEAPOLIS CENTER 124.4 317.7	UNICOM 122.8 (CTAF) 0
------------------------	--	---------------------------------



Procedure NA for arrivals at HURST on V345 southeast bound.

ELEV 1021	TDZE 1018
-----------	-----------



CATEGORY	A	B	C	D
LPV DA		1298-1	280 (300-1)	
LNAV/VNAV DA		1493-1 $\frac{3}{8}$	475 (500-1 $\frac{5}{8}$)	
LNAV MDA	1440-1	422 (500-1)	1440-1 $\frac{1}{4}$	422 (500-1 $\frac{1}{4}$)
C CIRCLING	1480-1 459 (500-1)	1560-1 539 (600-1)	1620-1 $\frac{1}{2}$ 599 (600-1 $\frac{1}{2}$)	1800-2 $\frac{1}{2}$ 779 (800-2 $\frac{1}{2}$)

REIL Rwys 2 and 20 **0**
MRL Rwys 2-20 and 12-30 **0**

EC-3, 30 DEC 2021 to 27 JAN 2022

EC-3, 30 DEC 2021 to 27 JAN 2022