

APP CRS <b>263°</b>	Rwy Idg <b>3779</b>
	TDZE <b>632</b>
	Apt Elev <b>634</b>

# RNAV (GPS) RWY 26

GRIFFITH-MERRILLVILLE (Ø5C)

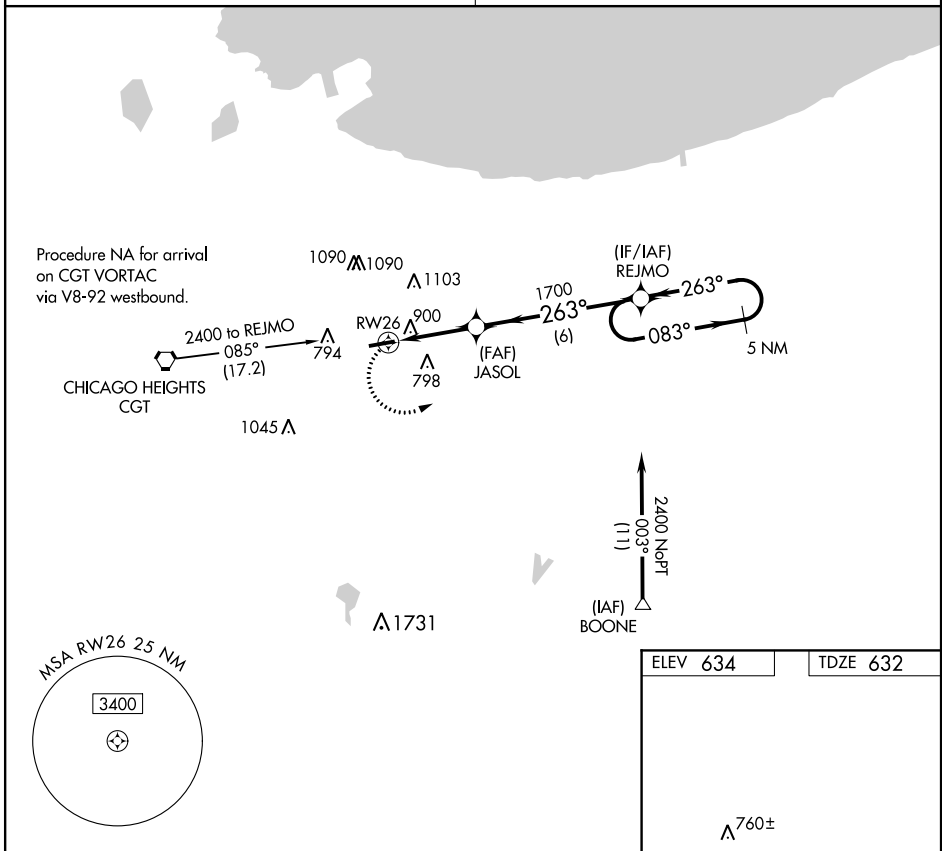
RNP APCH

▼ Obtain local altimeter setting on CTAF; when not received use Chicago Midway  
 ▲ NA Init altimeter setting and increase all MDAs 60 feet. Visibility reduction by  
 helicopters NA. Procedure NA at night.

MISSED APPROACH: Climbing left  
 turn to 2400 direct REJMO and hold.

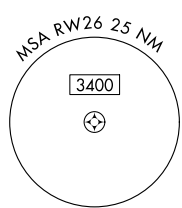
CHICAGO APP CON  
**133.1 285.6**

UNICOM  
**123.0 (CTAF) 0**

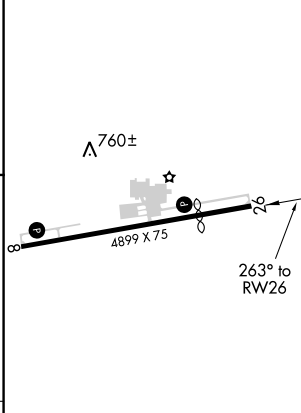
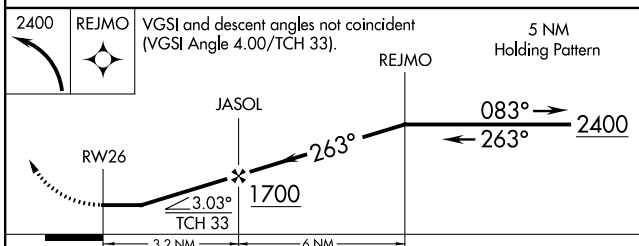


EC-2, 30 DEC 2021 to 27 JAN 2022

EC-2, 30 DEC 2021 to 27 JAN 2022



ELEV 634	TDZE 632
----------	----------



CATEGORY	A	B	C	D
LNNAV MDA	1160-1	528 (600-1)		NA
<input checked="" type="checkbox"/> CIRCLING	1200-1	566 (600-1)		NA

REL Rwy 8 and 26 0  
 MRL Rwy 8-26 0