

APP CRS	Rwy Idg	4899
083°	TDZE	634
	Apt Elev	634

RNAV (GPS) RWY 8

GRIFFITH-MERRILLVILLE (Ø5C)

RNP APCH.

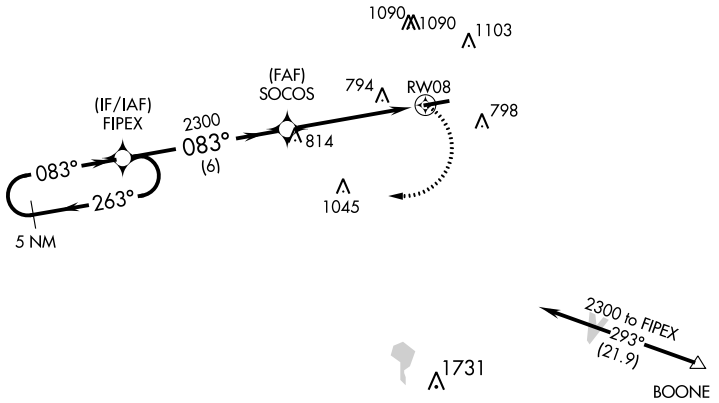
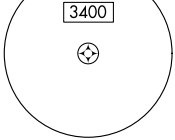
▼ Obtain local altimeter setting on CTAF; when not received use Chicago Midway
 ▲ NA Init altimeter setting and increase all MDAs 60 feet. Visibility reduction by helicopters NA. Procedure NA at night.

MISSED APPROACH: Climbing right turn to 2300 direct FIPEX and hold.

CHICAGO APP CON
133.1 285.6

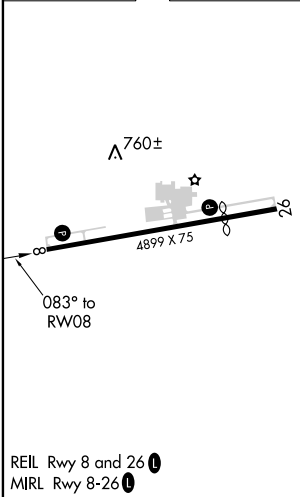
UNICOM
123.0 (CTAF) 1

MSA RW08 25 NM



ELEV 634	TDZE 634
----------	----------

Procedure NA for arrivals at BOONE via V422 southeastbound.



5 NM Holding Pattern	VGSi and descent angles not coincident (VGSi Angle 3.50/TCH 44).		2300	FIPEX
	2300	263°	083°	2300
	FIPEX	SOCOS	2300	083°
			3.04°	TCH 41
			6 NM	5 NM
CATEGORY	A	B	C	D
LNAV MDA	1080-1	446 (500-1)		NA
<input checked="" type="checkbox"/> CIRCLING	1200-1	566 (600-1)		NA