

LOC/DME I-JNE <b>109.55</b>	APP CRS <b>261°</b>	Rwy Idg TDZE Apt Elev	<b>5070</b> <b>934</b> <b>934</b>
Chan <b>32 (Y)</b>			

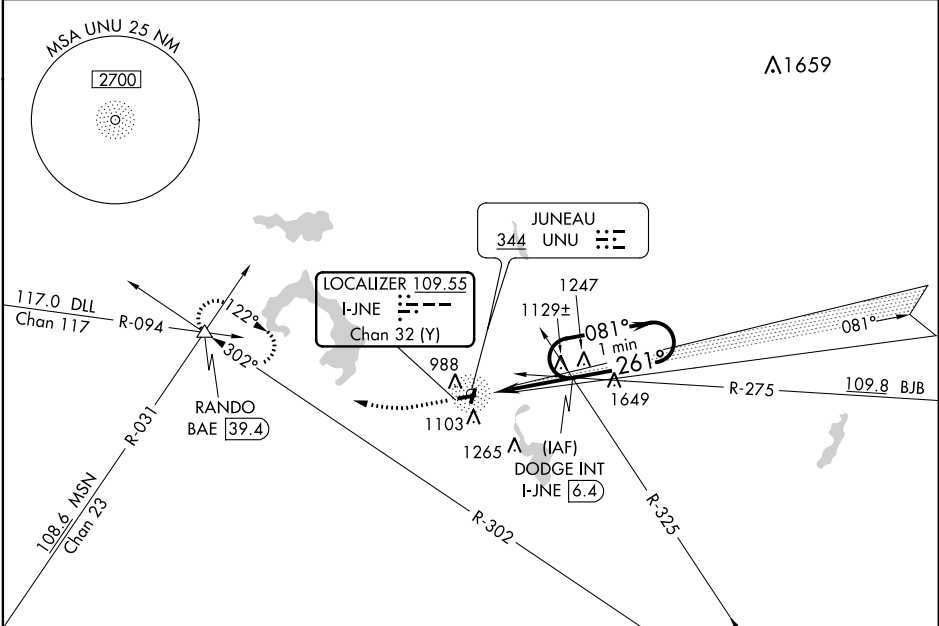
**LOC RWY 26**  
DODGE COUNTY (UNU)

**⚠** When local altimeter setting not received, use Dane County Rgnl-Truax fld altimeter setting and increase all MDAs 100 feet, and increase Circling Cat C visibility ¼ SM. Inoperative table does not apply. Visibility reduction by helicopters NA.



**MISSED APPROACH:** Climb to 2800 then climbing right turn to 3000 via BAE VORTAC R-302 to RANDO Int/BAE 39.4 DME and hold.

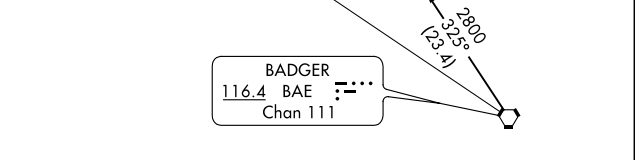
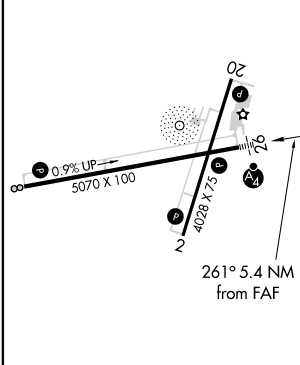
AWOS-3 <b>120.825</b>	MADISON APP CON <b>119.15 343.7</b>	UNICOM <b>122.7 (CTAF) 0</b>
--------------------------	--	---------------------------------



EC-3, 30 DEC 2021 to 27 JAN 2022

EC-3, 30 DEC 2021 to 27 JAN 2022

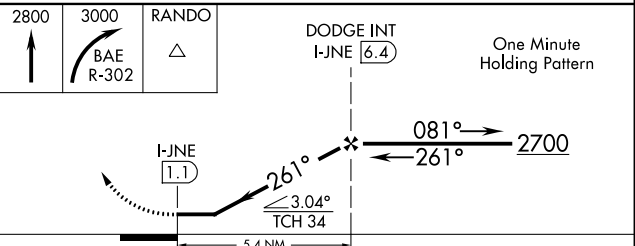
ELEV 934	TDZE 934
----------	----------



REIL Rws 2, 8, and 20  
MIRL Rws 8-26 and 2-20

FAF to MAP 5.4 NM

Knots	60	90	120	150	180
Min:Sec	5:24	3:36	2:42	2:10	1:48



CATEGORY	A	B	C	D
S-26	1380-1	446 (500-1)	1380-1¼ 446 (500-1¼)	NA
<b>C</b> CIRCLING	1440-1	506 (600-1)	1440-1½ 506 (600-1½)	NA