

WAAS CH <b>61307</b> <b>W20A</b>	APP CRS <b>198°</b>	Rwy Idg TDZE Apt Elev	<b>4028</b> <b>934</b> <b>934</b>
--	------------------------	-----------------------------	---

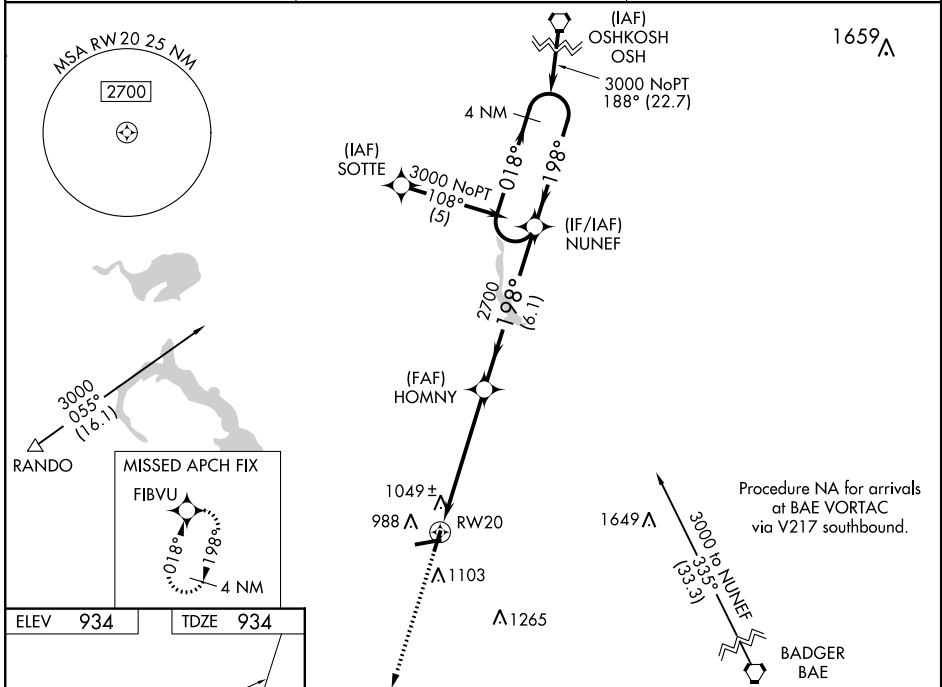
# RNAV (GPS) RWY 20

DODGE COUNTY (UNU)

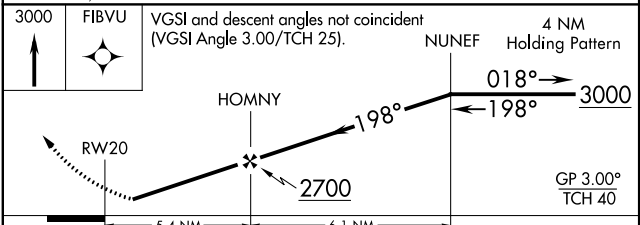
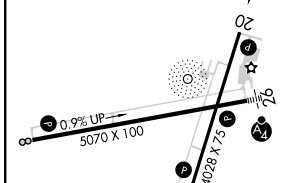
**⚠** For uncompensated Baro-VNAV systems, LNAV/VNAV NA below -16° C (4° F) or above 54° C (130° F). DME/DME RNP-0.3 NA. When local altimeter setting not received, use Dane County Rgnl-Truax Fld altimeter setting and increase all DA/MDA 100 feet, increase visibilities ¼ mile. Baro-VNAV NA when using Dane County Rgnl-Truax Fld altimeter setting. Visibility reduction by helicopters NA.

**⚠** MISSED APPROACH: Climb to 3000 direct FIBVU and hold.

AWOS-3 <b>120.825</b>	MADISON APP CON <b>119.15 343.7</b>	UNICOM <b>122.7 (CTAF) Ⓛ</b>
--------------------------	--	---------------------------------



ELEV 934	TDZE 934
----------	----------



CATEGORY	A	B	C	D
LPV DA	1214-1	280 (300-1)		NA
LNAV/VNAV DA	1350-1½	416 (500-1½)		NA
LNAV MDA	1300-1	366 (400-1)		NA
<b>C</b> CIRCLING	1440-1	506 (600-1)	1440-1½ 506 (600-1½)	NA

REIL Rwy 2, 8, and 20 Ⓛ  
MIRL Rwy 8-26 and 2-20 Ⓛ

EC-3, 30 DEC 2021 to 27 JAN 2022

EC-3, 30 DEC 2021 to 27 JAN 2022