

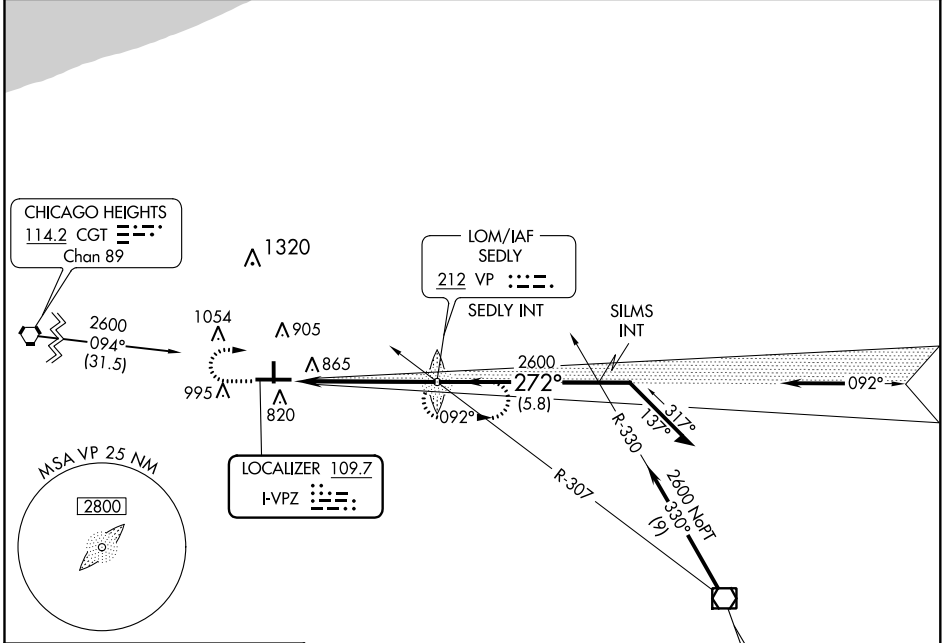
LOC I-VPZ 109.7	APP CRS 272°	Rwy ldg TDZE Apt Elev	6500 770 770
---------------------------	------------------------	-----------------------------	---

ILS RWY 27

PORTER COUNTY RGNL (VPZ)

	MALS R	MISSED APPROACH: Climb to 1400, then climbing right turn to 2600 direct SEDLY LOM and hold.	
--	--------	---	--

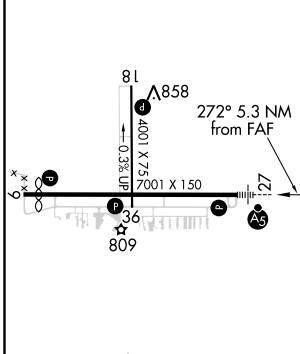
ASOS 125.875	SOUTH BEND APP CON * 132.05 257.8	CLNC DEL 120.525	UNICOM 122.725 (CTAF)
------------------------	---	----------------------------	---------------------------------



EC-2, 30 DEC 2021 to 27 JAN 2022

EC-2, 30 DEC 2021 to 27 JAN 2022

ELEV 770	D	TDZE 770
----------	----------	----------



HIRL Rwy 9-27

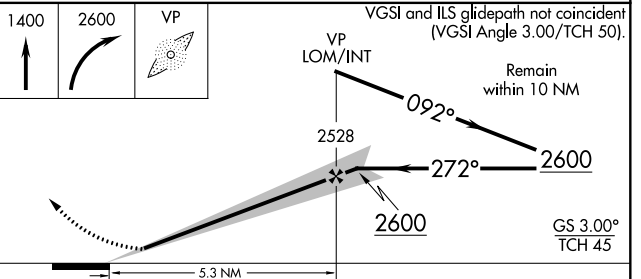
MIRL Rwy 18-36

REIL Rwys 9, 18 and 36

FAF to MAP 5.3 NM

Knots	60	90	120	150	180
Min:Sec	5:18	3:32	2:39	2:07	1:46

ADF REQUIRED



CATEGORY	A	B	C	D
S-ILS 27	970-½ 200 (200-½)			
S-LOC 27	1120-½ 350 (400-½)			1120-¾ 350 (400-¾)
CIRCLING	1260-1 490 (500-1)	1300-1 530 (600-1)	1360-1½ 590 (600-1½)	1620-2¾ 850 (900-2¾)