

WAAS CH 82406 W18A	APP CRS 182°	Rwy Idg 4001
		TDZE 770
		Apt Elev 770

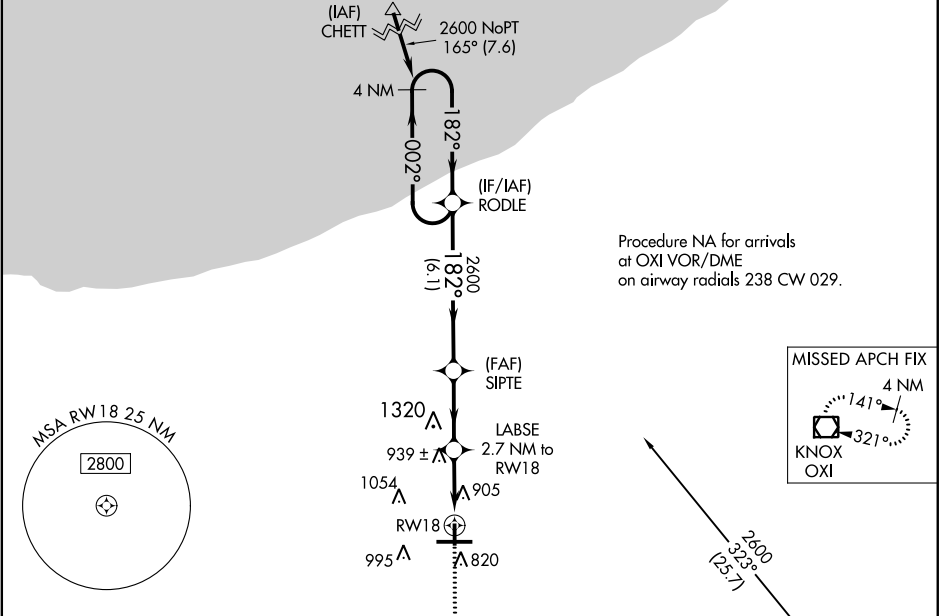
RNAV (GPS) RWY 18

PORTER COUNTY RGNL (VPZ)

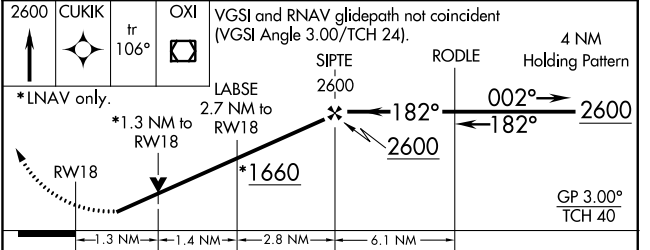
⚠ For uncompassated Baro-VNAV systems, procedure NA below -16°C (4°F) or above 54°C (130°F). DME/DME RNP -0.3 NA. When local altimeter setting not received, use Lansing Muni altimeter setting and increase all DA 77 feet and all MDA 80 feet, and increase LPV and LNAV/VNAV all Cats visibility ¼ mile. Baro-VNAV and VDP NA when using Lansing Muni altimeter setting. Helicopter visibility reduction below ¾ SM NA.

MISSED APPROACH:
Climb to 2600 direct CUKIK and on track 106° to OXI VOR/DME and hold.

ASOS 125.875	SOUTH BEND APP CON * 132.05 257.8	CLNC DEL 120.525	UNICOM 122.725 (CTAF) ①
------------------------	---------------------------------------------	----------------------------	-----------------------------------



ELEV 770	TDZE 770
D	
182° to RW18	
HIRL Rwy 9-27 ①	
MIRL Rwy 18-36 ①	
REIL Rwy 9, 18 and 36 ①	



CATEGORY	A	B	C	D
LPV DA	1120-1¼	350 (400-1¼)	NA	NA
LNAV/VNAV DA	1233-1¾	463 (500-1¾)	NA	NA
LNAV MDA	1200-1	430 (500-1)	NA	NA
CIRCLING	1260-1	1300-1	NA	NA
	490 (500-1)	530 (600-1)		

EC-2, 30 DEC 2021 to 27 JAN 2022

EC-2, 30 DEC 2021 to 27 JAN 2022