

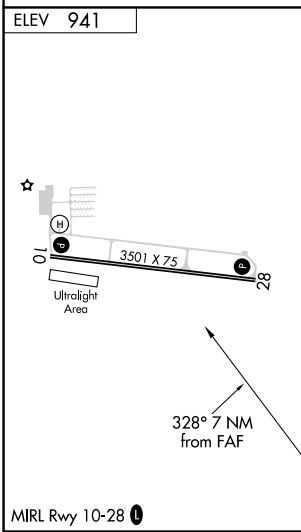
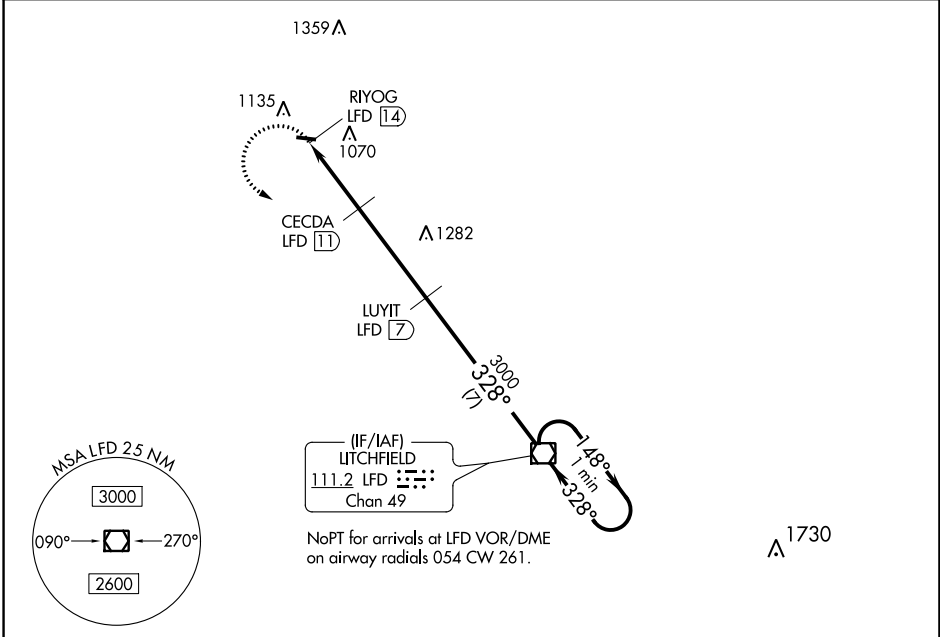
VOR/DME LFD <b>111.2</b> Chan <b>49</b>	APP CRS <b>328°</b>	Rwy Idg TDZE Apt Elev <b>NA</b> <b>NA</b> <b>941</b>
---	------------------------	---

**VOR/DME-A**  
BROOKS FLD (RMY)

**⚠** When local altimeter setting not received, use Battle Creek altimeter setting: increase all MDA 40 feet and Cat C visibility 1/4 SM. Helicopter visibility reduction below 3/4 SM NA. Night landing: Rwy 10 NA.

**⚠** MISSED APPROACH: Climbing left turn to 3000 direct LFD VOR/DME and hold.

AWOS-3 <b>120.025</b>	GREAT LAKES APP CON ★ <b>119.2 239.25</b>	UNICOM <b>122.8 (CTAF) 0</b>
--------------------------	--	---------------------------------



3000	LFD	LUYIT LFD 7	LFD VOR/DME	One Minute Holding Pattern
RIYOG LFD 14	CECD LFD 11	3000	328°	148°
1680	3000	328°	3000	328°
3 NM	4 NM	7 NM		
CATEGORY	A	B	C	D
CIRCLING	1500-1	559 (600-1)	1660-2 719 (800-2)	NA

EC-1, 30 DEC 2021 to 27 JAN 2022

EC-1, 30 DEC 2021 to 27 JAN 2022