


WAAS CH 82237 W18A	APP CRS 176°	Rwy Idg TDZE Apt Elev	5001 1477 1477
--	------------------------	-----------------------------	---

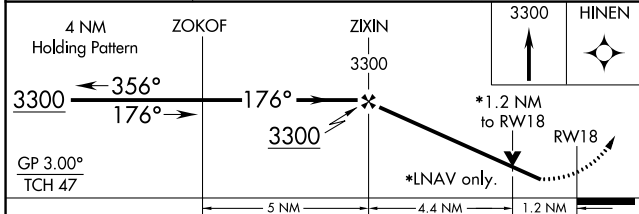
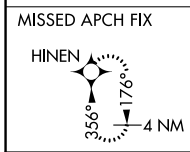
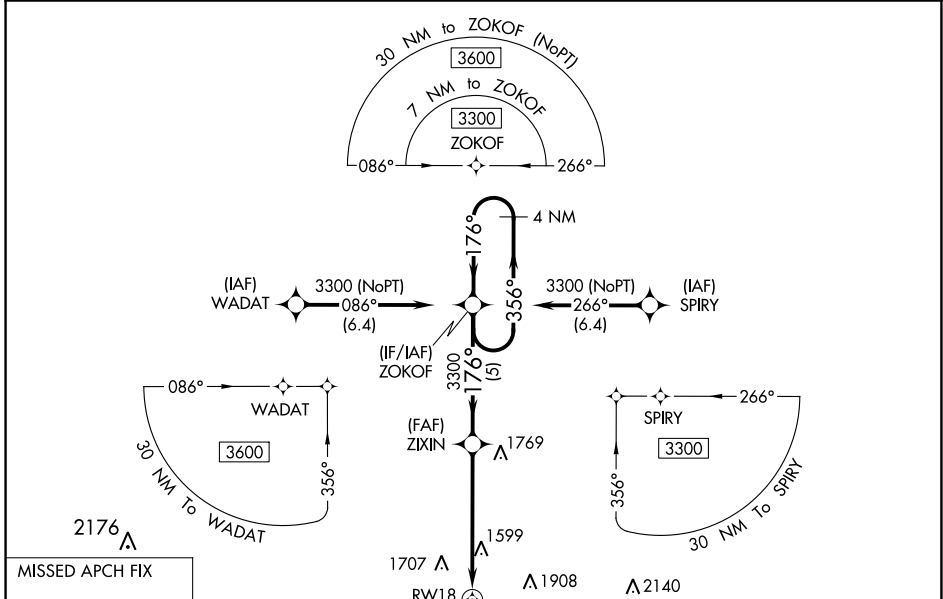
RNAV (GPS) RWY 18

ALVA RGNL (AVK)

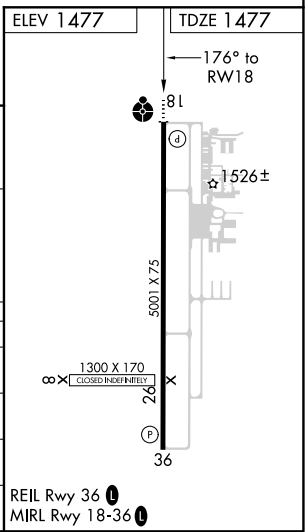
⚠ For uncompensated Baro-VNAV systems, LNAV/VNAV NA below -17°C (2°F) or above 54°C (130°F). DME/DME RNP-0.3 NA. When local altimeter setting not received, use Vance AFB altimeter setting and increase all DA 127 feet and all MDA 140 feet; increase LPV all Cats and LNAV Cat C visibility 3/8 mile, LNAV/VNAV all Cats and Circling Cat C visibility 1/2 mile. Baro-VNAV and VDP NA when using Vance AFB altimeter setting. Helicopter visibility reduction below 3/4 SM NA.

ODALS  MISSED APPROACH: Climb to 3300 direct HINEN and hold.

AWOS-3PT 121.125	VANCE APP CON * 126.75 346.325	UNICOM 122.8 (CTAF) 0
----------------------------	--	---------------------------------



CATEGORY	A	B	C	D
LPV DA	1738-7/8 261 (300-7/8)			NA
LNAV/VNAV DA	1748-7/8 271 (300-7/8)			NA
LNAV MDA	1900-1	423 (500-1)	1900-1 1/4 423 (500-1 1/4)	NA
C CIRCLING	1980-1 503 (600-1)	2120-1 643 (700-1)	2220-2 1/4 743 (800-2 1/4)	NA



SC-1, 30 DEC 2021 to 27 JAN 2022

SC-1, 30 DEC 2021 to 27 JAN 2022