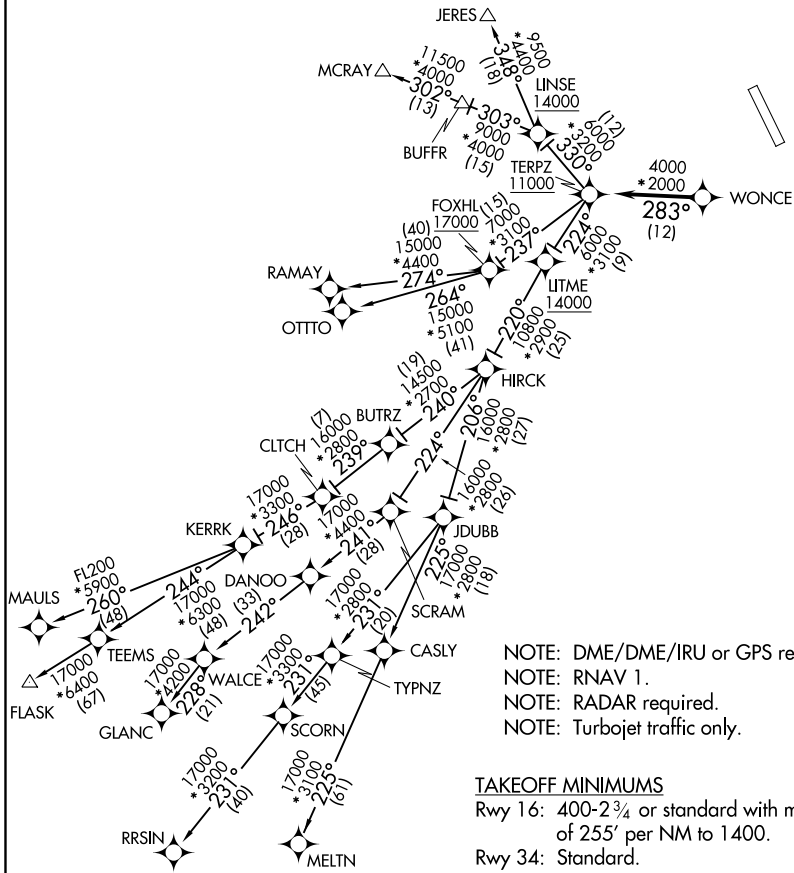


TERPZ SEVEN DEPARTURE (RNAV)

AWOS-3
121.25
UNICOM
122.7 (CTAF)
POTOMAC DEP CON
125.525 291.625

TOP ALTITUDE:
RAMAY, OTTTO, MAULS, FLASK,
RRSIN, GLANC, MELTN
TRANSITIONS: 17000
JERES, MCRAY TRANSITIONS:
16000



NOTE: DME/DME/IRU or GPS required.
NOTE: RNAV 1.
NOTE: RADAR required.
NOTE: Turbojet traffic only.

TAKEOFF MINIMUMS

Rwy 16: 400-2¾ or standard with minimum climb of 255' per NM to 1400.
Rwy 34: Standard.

NOTE: Chart not to scale.

NE-3, 30 DEC 2021 to 27 JAN 2022

NE-3, 30 DEC 2021 to 27 JAN 2022