

WAAS CH <b>82134</b> <b>W26A</b>	APP CRS <b>258°</b>	Rwy Idg TDZE Apt Elev	<b>5000</b> <b>209</b> <b>239</b>
----------------------------------------	------------------------	-----------------------------	-----------------------------------------

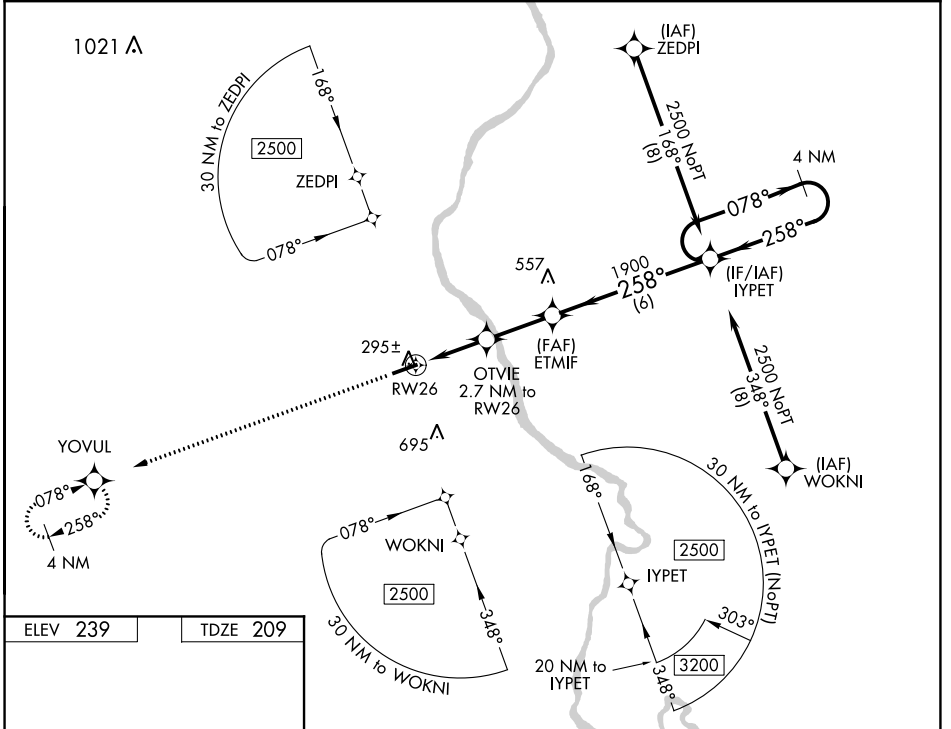
# RNAV (GPS) RWY 26

CHERAW MUNI/LYNCH BELLINGER FIELD (CQW)

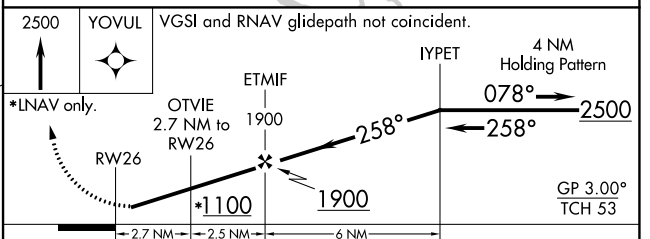
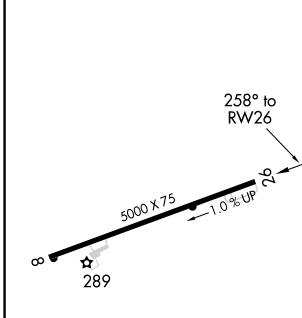
**▼** **▲** DME/DME RNP-0.3 NA. When local altimeter setting not received, use Darlington altimeter setting and increase all DA 44 feet, all MDA 60 feet, LNAV/VNAV all Cats visibility 1/8 mile, LNAV Cat C/D and Circling Cat C/D visibility 1/4 mile. Helicopter visibility reduction below 1 SM NA. For uncompensated Baro-VNAV systems, LNAV/VNAV NA below -15°C (5°F) or above 54°C (130°F). Procedure NA at night.

**MISSED APPROACH:** Climb to 2500 direct YOVL and hold.

AWOS-3 <b>124.825</b>	FLORENCE APP CON ★ <b>118.6 341.7</b>	UNICOM <b>122.8 (CTAF) 0</b>
--------------------------	------------------------------------------	---------------------------------



ELEV 239	TDZE 209
----------	----------



CATEGORY	A	B	C	D
LPV DA		459-1	250 (300-1)	
LNAV/VNAV DA		578-1½	369 (400-1½)	
LNAV MDA		560-1	351 (400-1)	
<b>C</b> CIRCLING	700-1	461 (500-1)	1060-2½ 821 (900-2½)	1060-2¾ 821 (900-2¾)

SE-2, 30 DEC 2021 to 27 JAN 2022

SE-2, 30 DEC 2021 to 27 JAN 2022