


LOC I-GKJ 108.5	APP CRS 249°	Rwy Idg TDZE Apt Elev	5001 1399 1399
---------------------------	------------------------	-----------------------------	-------------------------------------------

LOC RWY 25

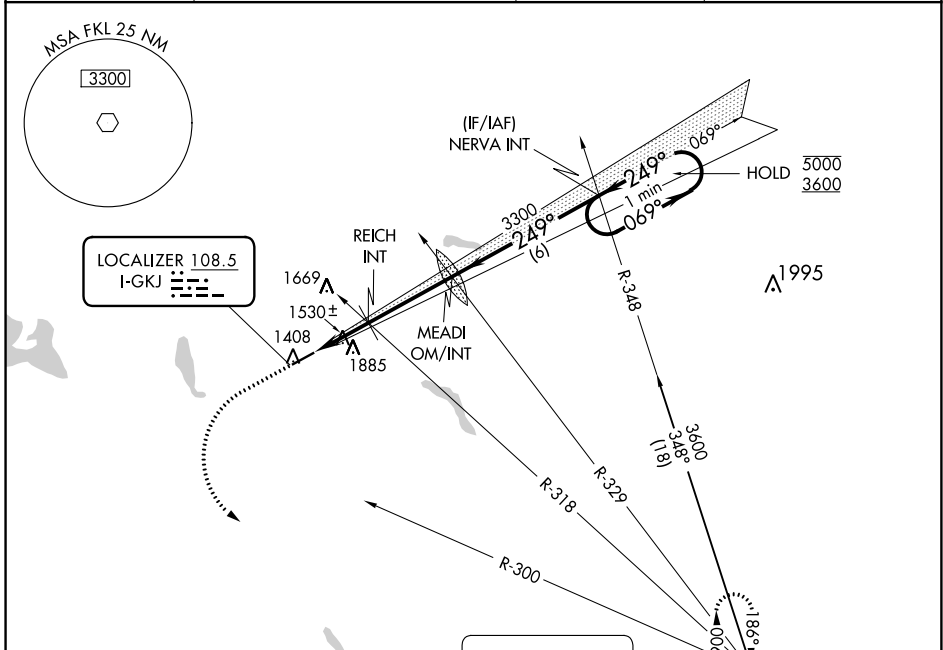
PORT MEADVILLE (GKJ)

RADAR required.

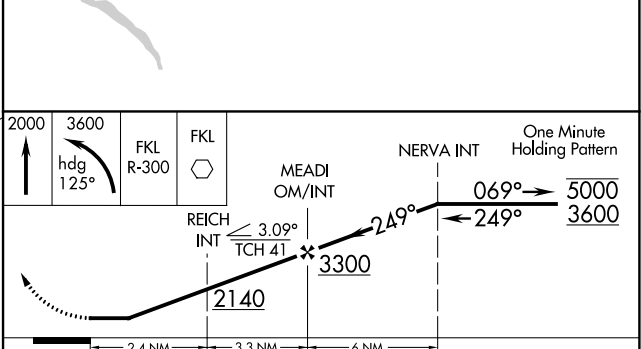
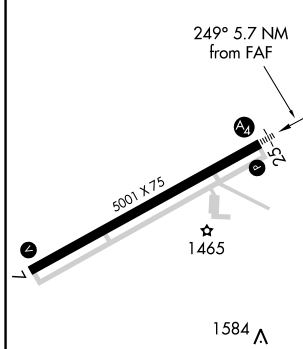
⚠ Inop table does not apply.
 ⚠ Rwy 25 helicopter visibility reduction below 3/4 SM NA.

MALS  MISSED APPROACH: Climb to 2000 then climbing left turn to 3600 on heading 125° and FKL VOR R-300 to FKL VOR and hold.

ASOS 121.425	YOUNGSTOWN APP CON* 133.95 322.3	CLNC DEL 124.95	UNICOM 123.0 (CTAF) 0
------------------------	--------------------------------------------	---------------------------	---------------------------------



ELEV 1399	TDZE 1399
-----------	-----------



CATEGORY	A	B	C	D
S-LOC 25	1780-1	381 (400-1)	1780-1 7/8	381 (400-1 7/8)
CIRCLING	1900-1 501 (600-1)	2240-1 1/4 841 (900-1 1/4)	2240-2 1/2 841 (900-2 1/2)	2240-2 3/4 841 (900-2 3/4)

MEADVILLE, PENNSYLVANIA
 Amdt 6E 19JUL18

41°38'N-80°13'W

PORT MEADVILLE (GKJ)

LOC RWY 25

NE-4, 30 DEC 2021 to 27 JAN 2022

NE-4, 30 DEC 2021 to 27 JAN 2022