

APP CRS	Rwy ldg	5425
138°	TDZE	20
	Apt Elev	20

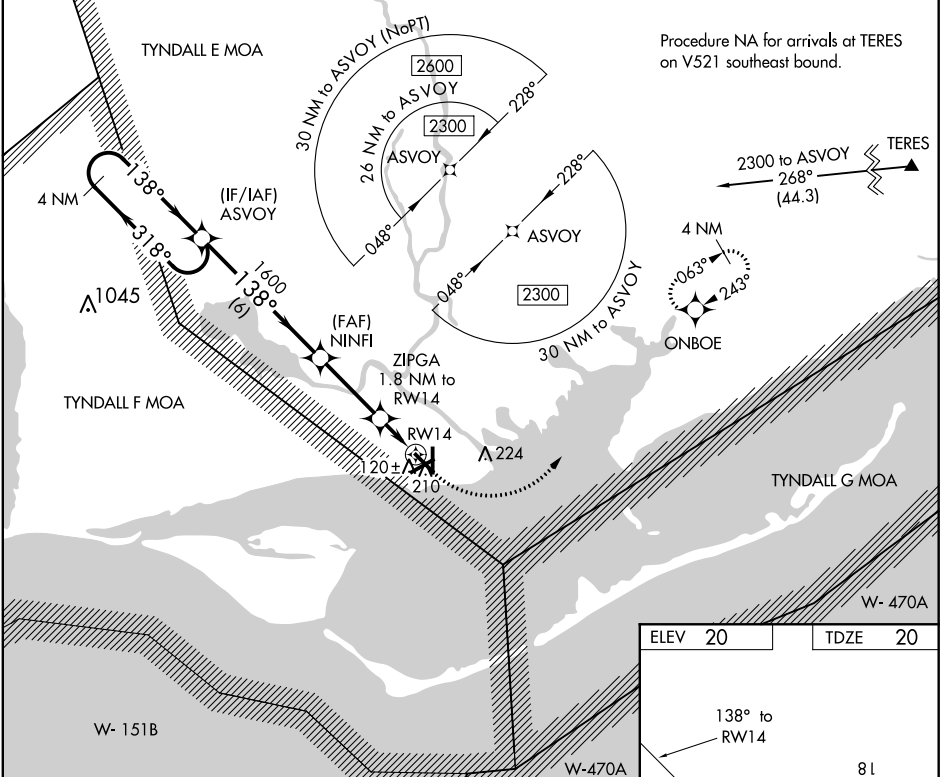
RNAV (GPS) RWY 14

APALACHICOLA RGNL-CLEVE RANDOLPH FLD (AAF)

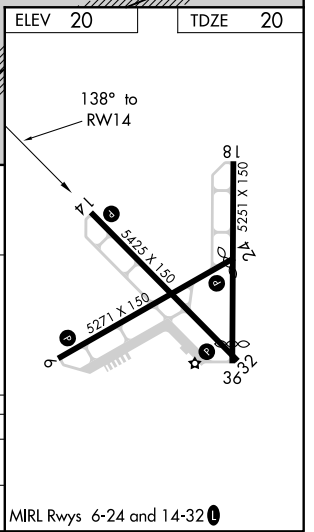
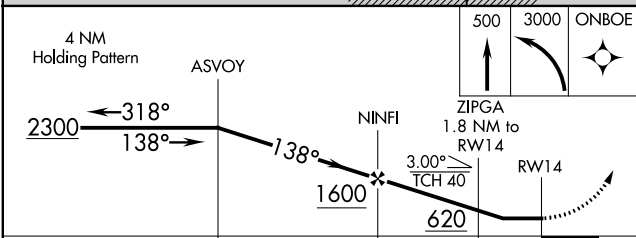
⚠ DME/DME RNP-0.3 NA. Helicopter visibility reduction below 1 SM NA. When local altimeter setting not received, use Northwest Florida Beaches Intl altimeter setting and increase all MDAs 140 feet, increase LNAV Cats C/D visibility $\frac{1}{2}$ SM and Circling Cats C/D visibility $\frac{1}{2}$ SM. Straight-in Rwy 14 NA at night, Circling Rwy 6, 14, 18, 24, 32 NA at night.

⚠ MISSED APPROACH: Climb to 500 then climbing left turn to 3000 direct ONBOE and hold, continue climb-in-hold to 3000.

ASOS 119.925	TYNDALL APP CON ★ 124.15	UNICOM 122.8 (CTAF) 📻
------------------------	------------------------------------	--



Procedure NA for arrivals at TERES on V521 southeast bound.



CATEGORY	A	B	C	D
LNAV MDA	400-1	380 (400-1)	400-1 $\frac{1}{8}$	380 (400-1 $\frac{1}{8}$)
CIRCLING	520-1	500 (500-1)	680-1 $\frac{3}{4}$ 660 (700-1 $\frac{3}{4}$)	680-2 660 (700-2)

RNAV (GPS) RWY 14

SE-3, 30 DEC 2021 to 27 JAN 2022

SE-3, 30 DEC 2021 to 27 JAN 2022