

WAAS CH <b>93505</b> <b>W24A</b>	APP CRS <b>242°</b>	Rwy Idg TDZE Apt Elev	<b>5054</b> <b>20</b> <b>20</b>
--	------------------------	-----------------------------	---------------------------------------

# RNAV (GPS) RWY 24

APALACHICOLA RGNL-CLEVE RANDOLPH FLD (AAF)

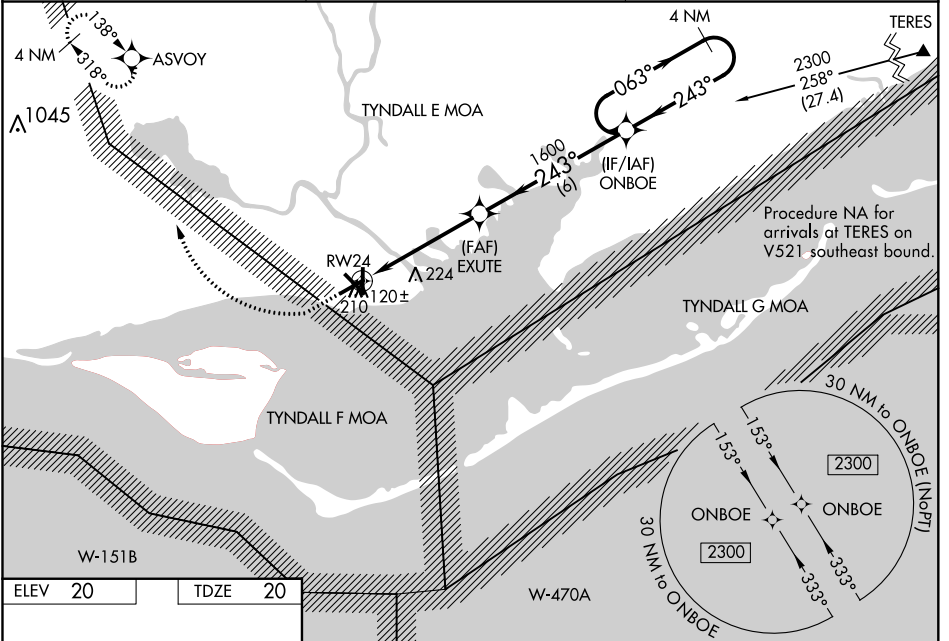
**⚠** Baro-VNAV and VDP NA when using Northwest Florida Beaches Intl altimeter setting. For uncompensated Baro-VNAV systems, LNAV/VNAV NA below -1.5°C (-5°F) or above 54°C (130°F). DME/DME RNP-0.3 NA. Helicopter visibility reduction below 3/4 SM NA. When local altimeter setting not received, use Northwest Florida Beaches Intl altimeter setting: increase LPV DA to 493, LNAV/VNAV DA to 512 and all MDAs 140 feet; increase LPV and LNAV/VNAV all Cats visibility 1/2 SM, LNAV Cats C/D visibility 3/8 SM, and Circling Cats C/D visibility 1/2 SM. Circling Rwy 6, 14, 18, 24, 32 NA at night.

**MISSED APPROACH:** Climb to 600 then climbing right turn to 3000 direct ASVOY and hold, continue climb-in-hold to 3000.

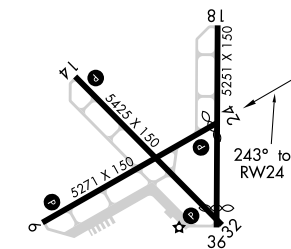
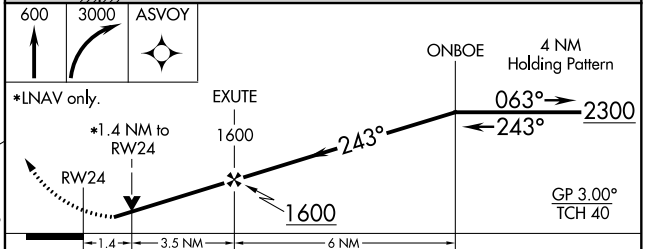
ASOS  
**119.925**

TYNDALL APP CON ★  
**124.15**

UNICOM  
**122.8 (CTAF)**



ELEV 20	TDZE 20
---------	---------



CATEGORY	A	B	C	D
LPV DA		359-1 1/8	339 (400-1 1/8)	
LNAV/VNAV DA		378-1 1/4	358 (400-1 1/4)	
LNAV MDA	500-1	480 (500-1)	500-1 3/8	480 (500-1 3/8)
CIRCLING	520-1	500 (500-1)	680-1 3/4 660 (700-1 3/4)	680-2 660 (700-2)

MIRL Rwy 6-24 and 14-32

SE-3, 30 DEC 2021 to 27 JAN 2022

SE-3, 30 DEC 2021 to 27 JAN 2022