

WAAS CH 70704 W32A	APP CRS 318°	Rwy Idg TDZE Apt Elev	5425 20 20
--	------------------------	-----------------------------	---------------------------------------

RNAV (GPS) RWY 32

APALACHICOLA RGNL-CLEVE RANDOLPH FLD (AAF)

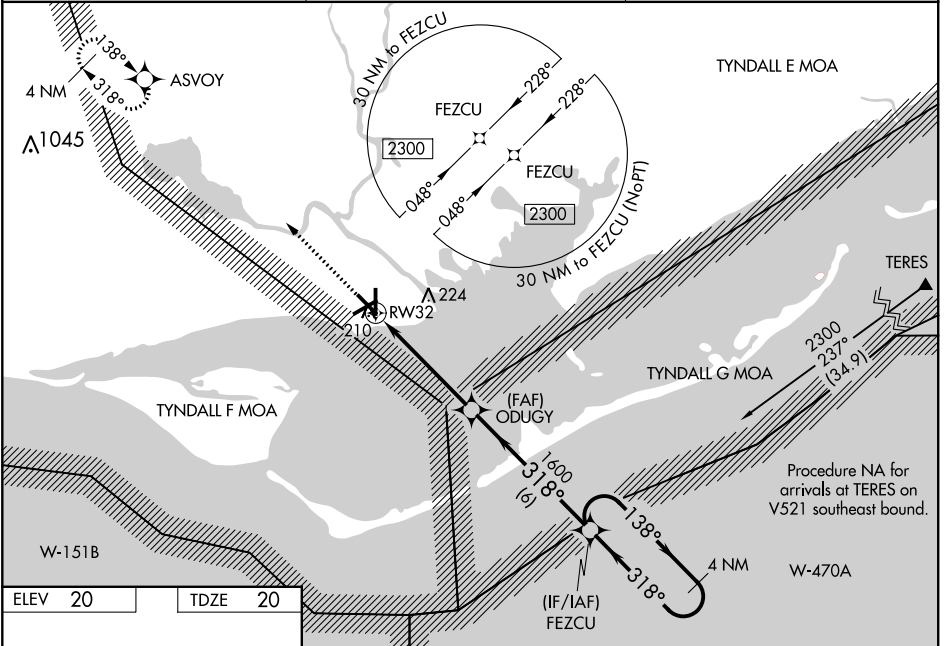
⚠ Baro-VNAV and VDP NA when using Northwest Florida Beaches Intl altimeter setting. For uncompensated Baro-VNAV systems, LNAV/VNAV NA below -15°C (-5°F) or above 54°C (130°F). DME/DME RNP-0.3 NA. Helicopter visibility reduction below 3/4 SM NA. When local altimeter setting not received, use Northwest Florida Beaches Intl altimeter setting: increase LPV DA to 483, LNAV/VNAV DA to 530 and all MDAs 140 feet; increase LPV and LNAV/VNAV all Cts visibility 1/2 SM, LNAV Cts C/D visibility 3/8 SM, and Circling Cts C/D visibility 1/2 SM. Circling Rwy 6, 14, 18, 24, 32 NA at night.

MISSED APPROACH:
Climb to 3000 direct ASVOY and hold.

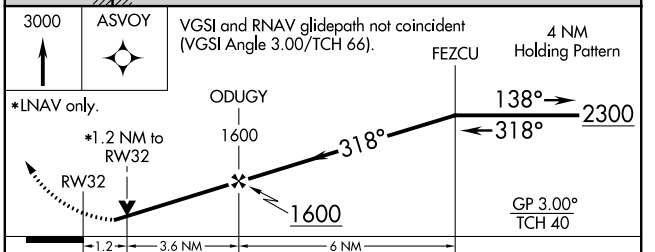
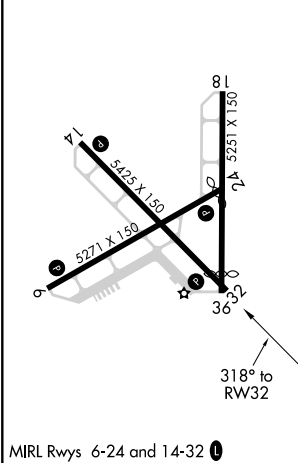
ASOS
119.925

TYNDALL APP CON ★
124.15

UNICOM
122.8 (CTAF) 0



ELEV 20	TDZE 20
---------	---------



CATEGORY	A	B	C	D
LPV DA	349-1 3/8 329 (400-1 1/8)			
LNAV/VNAV DA	396-1 1/4 376 (400-1 1/4)			
LNAV MDA	460-1	440 (500-1)	460-1 3/8	440 (500-1 1/8)
CIRCLING	520-1	500 (500-1)	680-1 3/4 660 (700-1 3/4)	680-2 660 (700-2)

RNAV (GPS) RWY 32

SE-3, 30 DEC 2021 to 27 JAN 2022

SE-3, 30 DEC 2021 to 27 JAN 2022