

WAAS CH <b>63225</b> <b>W09A</b>	APP CRS <b>092°</b>	Rwy Idg TDZE <b>922</b> Apt Elev <b>925</b>	<b>4002</b>
--	------------------------	---	-------------

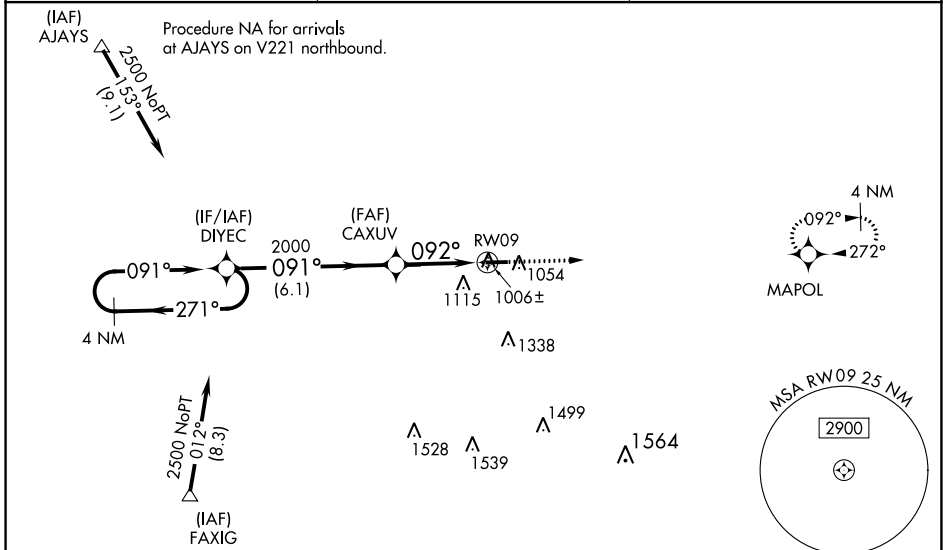
# RNAV (GPS) RWY 9

PORTLAND MUNI (PLD)

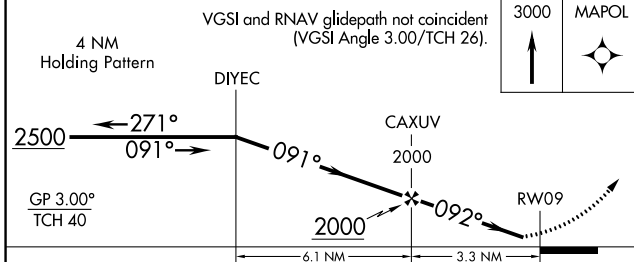
**Baro-VNAV NA** when using Fort Wayne Intl altimeter setting. For uncompensated Baro-VNAV systems, LNAV/VNAV NA below -16°C (4°F) or above 54°C (130°F). DME/DME RNP-0.3 NA. Helicopter visibility reduction below 1 SM NA. When local altimeter setting not received, use Fort Wayne Intl altimeter setting; increase LPV DA to 1320 feet and all visibilities ½ SM; increase all MDAs 100 feet and visibility Cat C ½ SM. When VGSI inop, Straight-in/Circling Rwy 9 procedure NA at night. When VGSI inop, Circling Rwy 27 NA at night.

**MISSED APPROACH:**  
Climb to 3000 direct MAPOL and hold.

AWOS-3 <b>124.675</b>	FORT WAYNE APP CON <b>132.15 (SE/NE) 284.6</b> <b>127.2 (SW/NW) 284.6</b>	UNICOM <b>122.8 (CTAF) 0</b>
--------------------------	---	---------------------------------



Procedure NA for arrivals at FAXIG on V14 southwest bound.



ELEV 925	TDZE 922
----------	----------

0.3% UP → 4002 X 75

092° to RW09

MIRL Rwy 9-27 0

REIL Rws 9 and 27 0

CATEGORY	A	B	C	D
LPV DA		1172-1 250 (300-1)		NA
LNAV/VNAV DA		1237-1 315 (400-1)		NA
LNAV MDA		1260-1 338 (400-1)		NA
CIRCLING	1480-1 555 (600-1)		1580-1¾ 655 (700-1¾)	NA

EC-2, 30 DEC 2021 to 27 JAN 2022

EC-2, 30 DEC 2021 to 27 JAN 2022