

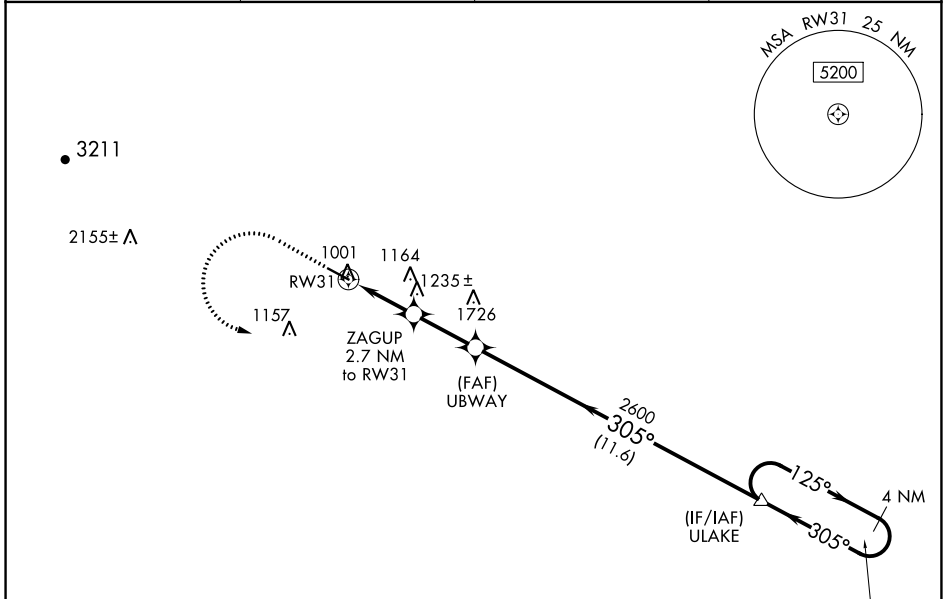
WAAS CH <b>65802</b> <b>W31A</b>	APP CRS <b>305°</b>	Rwy Idg TDZE <b>5002</b> <b>925</b> Apt Elev <b>941</b>
--	------------------------	--

# RNAV (GPS) RWY 31

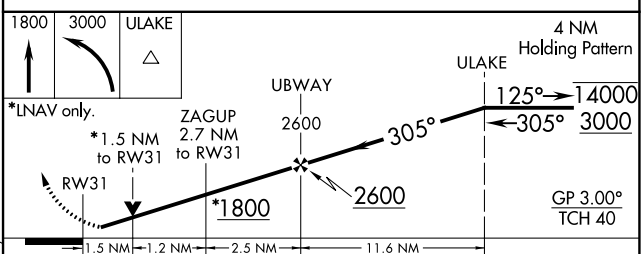
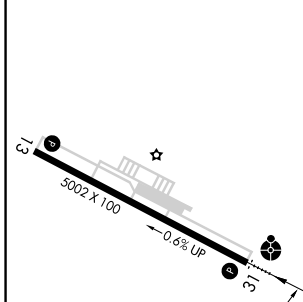
BLUE RIDGE (MTV)

RNP APCH.	ODALS	MISSED APPROACH: Climb to 1800, then climbing left turn to 3000 direct ULAKE and hold.
<p><b>▽</b> <b>▲</b> Rwy 31 helicopter visibility reduction below 3/4 SM NA. Inop table does not apply to LPV and LNAV/VNAV all Cats. For uncompensated Baro-VNAV systems, LNAV/VNAV NA below -16°C or above 54°C.</p>		

AWOS-3 <b>118.45</b>	GREENSBORO APP CON <b>124.35 269.225</b>	CLNC DEL <b>124.85</b>	UNICOM <b>122.7 (CTAF) 0</b>
-------------------------	---	---------------------------	---------------------------------



ELEV <b>941</b>	TDZE <b>925</b>
-----------------	-----------------



CATEGORY	A	B	C	D
LPV DA	1175-3/4		250 (300-3/4)	
LNAV/VNAV DA	1432-1 3/8		507 (500-1 3/8)	
LNAV MDA	1420-3/4	495 (500-3/4)	1420-1 1/4	495 (500-1 1/4)
<b>C</b> CIRCLING	1420-1 479 (500-1)	1440-1 499 (500-1)	1540-1 1/2 599 (600-1 1/2)	1800-2 3/4 859 (900-2 3/4)

MIRL Rwy 13-31 **0**  
REIL Rwy 13 and 31 **0**  
MARTINSVILLE, VIRGINIA  
Amdt 3A 22APR21

36°38'N-80°01'W

# BLUE RIDGE (MTV)

## RNAV (GPS) RWY 31

NE-3, 30 DEC 2021 to 27 JAN 2022

NE-3, 30 DEC 2021 to 27 JAN 2022