

# RNAV (GPS) RWY 6

WEST BEND MUNI (ETB)

APP CRS	Rwy Idg	<b>3897</b>
<b>060°</b>	TDZE	<b>887</b>
	Apt Elev	<b>887</b>

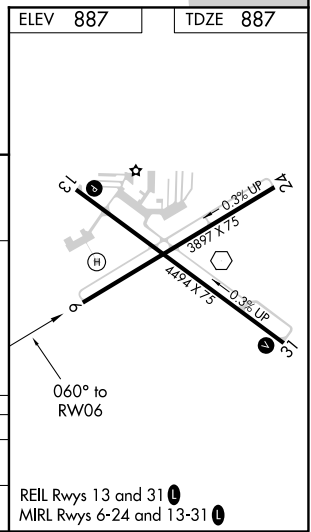
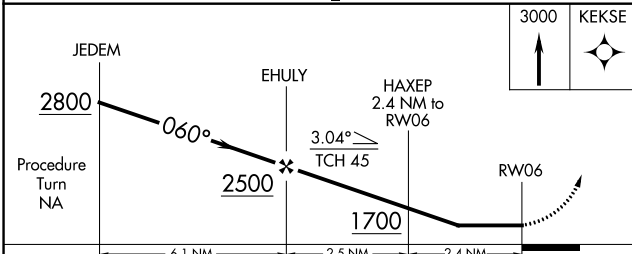
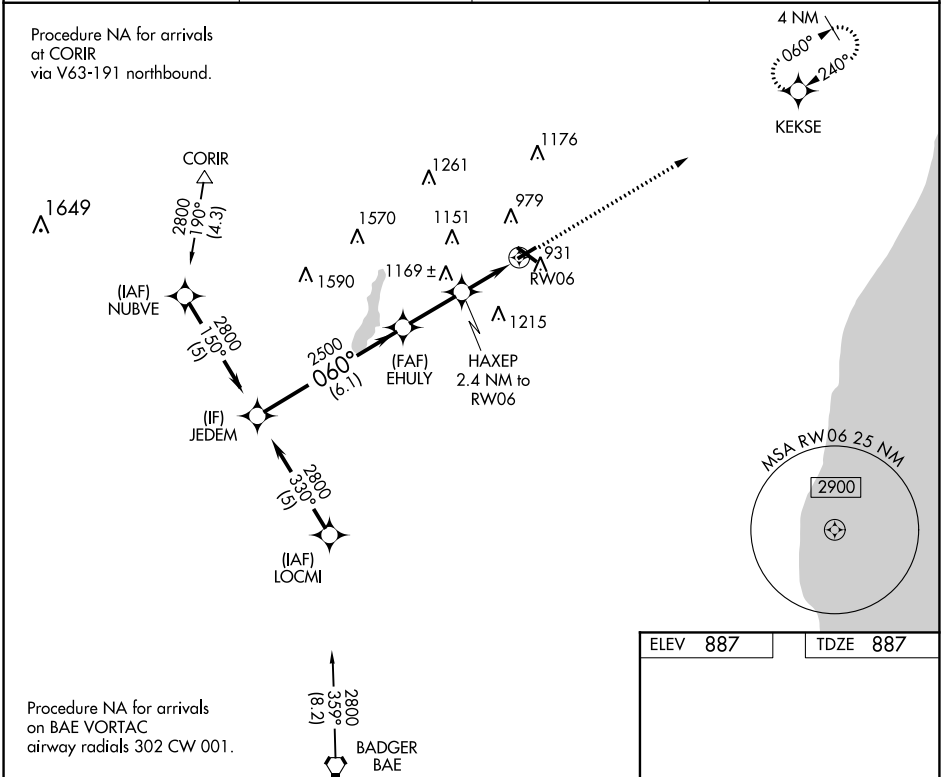
RNP APCH - GPS.

**▼** When local altimeter setting not received, use Milwaukee/Lawrence J. Timmerman altimeter setting and increase all MDA 80 feet and LNAV and Circling Cat C/D visibility ¼ mile.

**▲** Night landing: Rwy 6 NA. Helicopter visibility reduction below 1 SM NA.

**MISSED APPROACH:**  
Climb to 3000 direct KEKSE and hold.

AWOS-3 <b>120.0</b>	MILWAUKEE APP CON <b>125.35 307.0</b>	CLNC DEL <b>124.75</b>	UNICOM <b>122.8 (CTAF) ①</b>
------------------------	------------------------------------------	---------------------------	---------------------------------



CATEGORY	A	B	C	D
LNAV MDA	1460-1 573 (600-1)	573 (600-1)	1460-1 5/8 573 (600-1 5/8)	1460-1 3/4 573 (600-1 3/4)
CIRCLING	1460-1 573 (600-1)	1520-1 633 (700-1)	1560-2 673 (700-2)	1560-2 1/4 673 (700-2 1/4)

EC-3, 30 DEC 2021 to 27 JAN 2022

EC-3, 30 DEC 2021 to 27 JAN 2022