

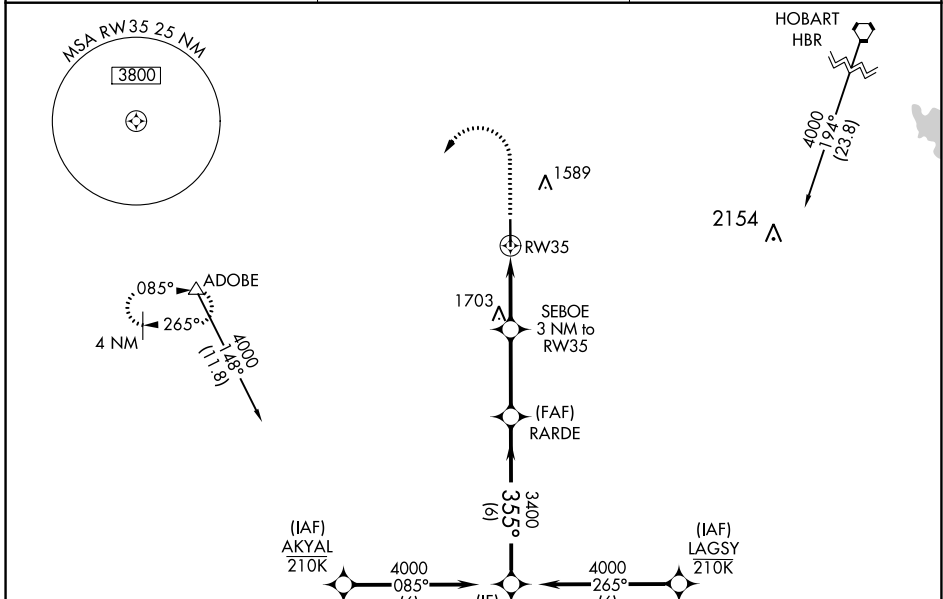
WAAS CH 93914 W35A	APP CRS 355°	Rwy Idg TDZE Apt Elev	5501 1423 1433
--	------------------------	-----------------------------	---

RNAV (GPS) RWY 35

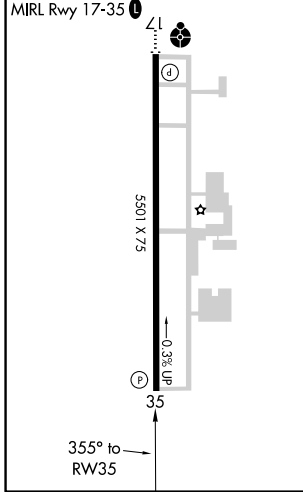
ALTUS/QUARTZ MOUNTAIN RGNL (A.X.S)

RNP APCH.	MISSED APPROACH: Climb to 2100 then climbing left turn to 4000 direct ADOBE and hold.
For uncompensated Baro-VNAV systems, LNAV/VNAV NA below -17°C or above 54°C.	

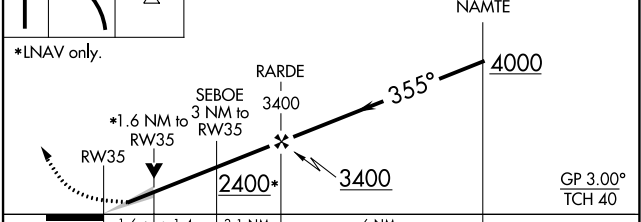
AWOS-3PT 118.825	ALTUS APP CON* 125.1 353.7	UNICOM 122.8 (CTAF) 0
----------------------------	--------------------------------------	---------------------------------



ELEV 1433	TDZE 1423
-----------	-----------



2100 4000 ADOBE VGSi and RNAV glidepath not coincident (VGSi Angle 3.00/TCH 40).



CATEGORY	A	B	C	D
LPV DA	1673-7/8		250 (300-7/8)	NA
LNAV/VNAV DA	1673-7/8		250 (300-7/8)	NA
LNAV MDA	1960-1	537 (600-1)	1960-1 1/2 537 (600-1 1/2)	NA
CIRCLING	1960-1	527 (600-1)	2020-1 1/2 587 (600-1 1/2)	NA

SC-1, 30 DEC 2021 to 27 JAN 2022

SC-1, 30 DEC 2021 to 27 JAN 2022