

ALTUS, OKLAHOMA

AL-5659 (FAA)

21224

VORTAC LTS <b>109.8</b> Chan 35	APP CRS <b>122°</b>	Rwy Idg TDZE Apt Elev <b>N/A</b> <b>N/A</b> <b>1433</b>
---------------------------------------	------------------------	--

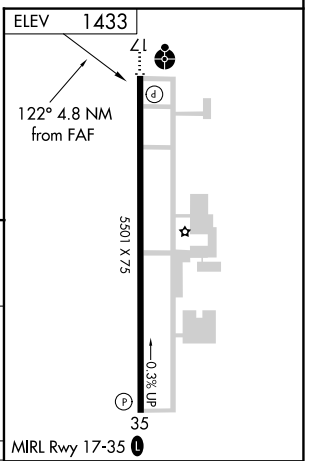
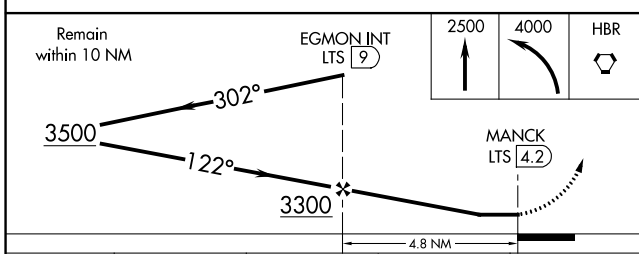
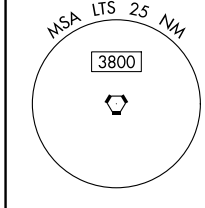
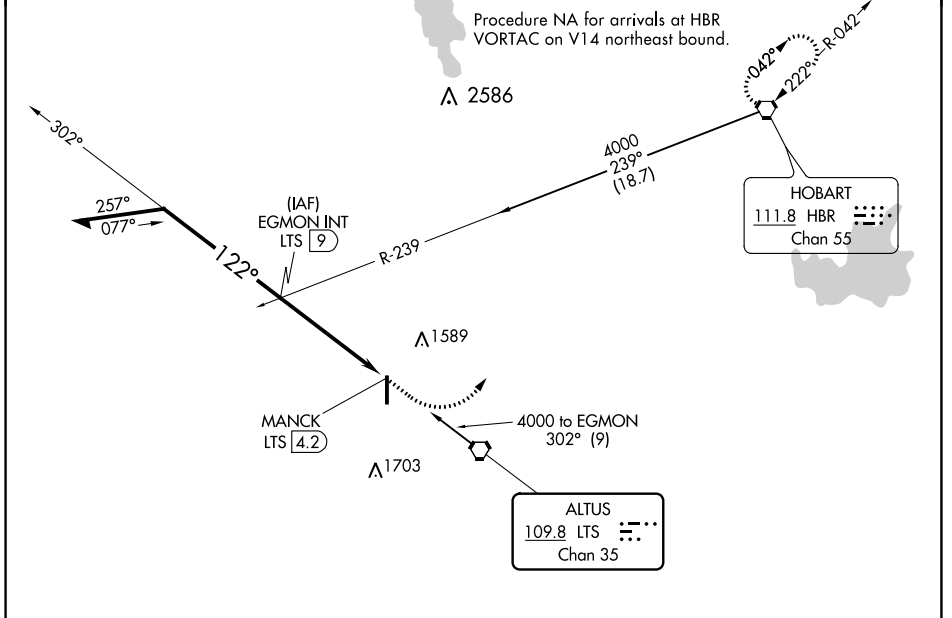
**VOR-A**

ALTUS/QUARTZ MOUNTAIN RGNL (A.X.S)

**⚠** When local altimeter setting not received, use Hobart Rgnl altimeter setting and increase all MDA 80 feet. Increase Circling Cat C visibility ¼ mile.

**⚠** MISSED APPROACH: Climb to 2500 then climbing left turn to 4000 direct HBR VORTAC and hold.

AWOS-3PT <b>118.825</b>	ALTUS APP CON* <b>125.1 353.7</b>	UNICOM <b>122.8 (CTAF)</b>
----------------------------	--------------------------------------	-------------------------------



CATEGORY	FAF to MAP 4.8 NM					
	A	B	C	D		
<b>C</b> CIRCLING	1920-1	487 (500-1)	2020-1½ 587 (600-1½)	NA		
	Knots	60	90	120	150	180
	Min:Sec	4:48	3:12	2:24	1:55	1:36

ALTUS, OKLAHOMA  
Orig 08JAN15

34°42'N-99°20'W

ALTUS/QUARTZ MOUNTAIN RGNL (A.X.S)

**VOR-A**

SC-1, 30 DEC 2021 to 27 JAN 2022

SC-1, 30 DEC 2021 to 27 JAN 2022