

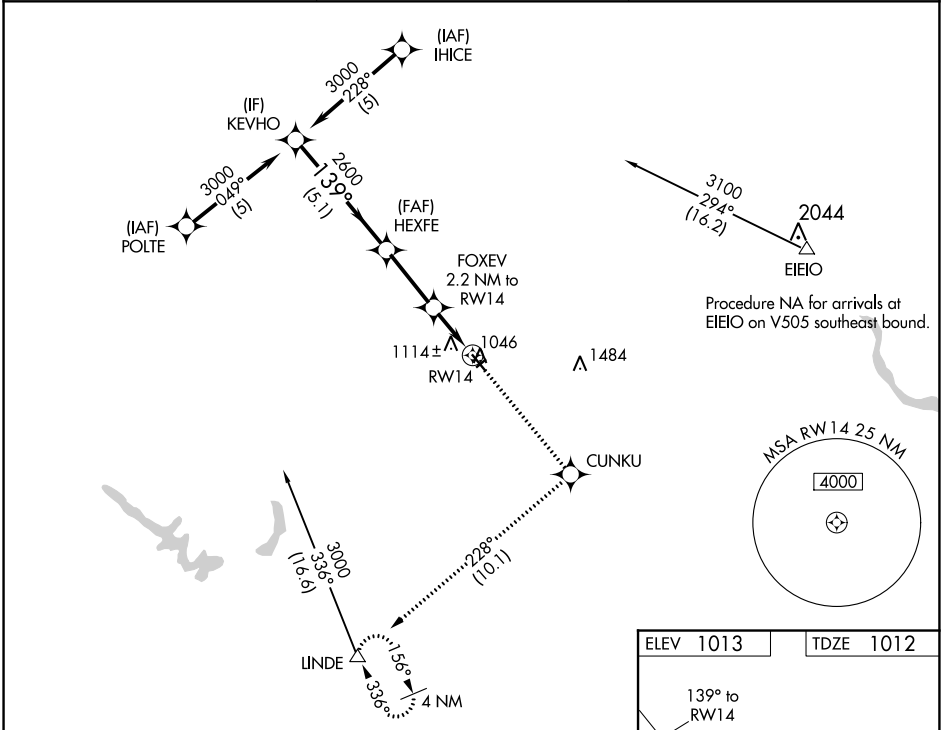
WAAS CH <b>61326</b> <b>W14A</b>	APP CRS <b>139°</b>	Rwy Idg TDZE Apt Elev	<b>4001</b> <b>1012</b> <b>1013</b>
--	------------------------	-----------------------------	---

# RNAV (GPS) RWY 14

PERRY MUNI (PRO)

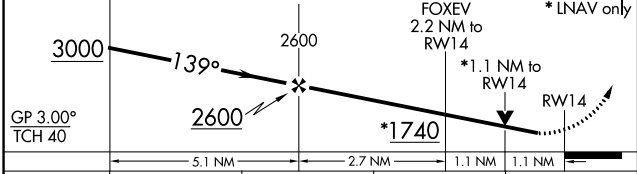
RNP APCH.	MISSED APPROACH: Climb to 3500 direct CUNKU and on track 228° to LINDE and hold.
<p>⚠ Circling NA to Rwy 4 and 22. Rwy 14 helicopter visibility reduction below 3/4 SM NA.</p> <p>⚠ For uncompensated Baro-VNAV systems, LNAV/VNAV NA below -17°C or above 54°C.</p>	

AWOS-3 <b>118.0</b>	DES MOINES APP CON <b>135.2 360.7</b>	UNICOM <b>122.8 (CTAF)</b>
------------------------	--	-------------------------------

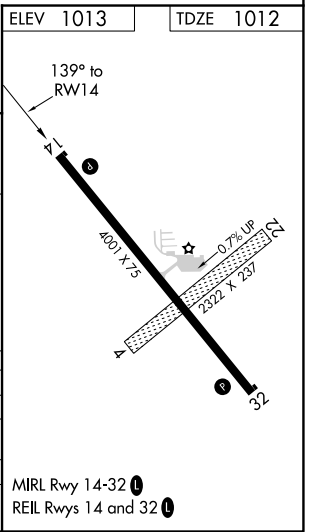


VGSI and RNAV glidepath not coincident (VGSI Angle 3.00/TCH 27).

3500	CUNKU	tr 228°	LINDE
------	-------	---------	-------



CATEGORY	A	B	C	D
LPV DA	1262-7/8	250 (300-7/8)		NA
LNAV/VNAV DA	1262-7/8	250 (300-7/8)		NA
LNAV MDA	1380-1	368 (400-1)		NA
<b>C</b> CIRCLING	1460-1 447 (500-1)	1480-1 467 (500-1)		NA



NC-3, 30 DEC 2021 to 27 JAN 2022

NC-3, 30 DEC 2021 to 27 JAN 2022