

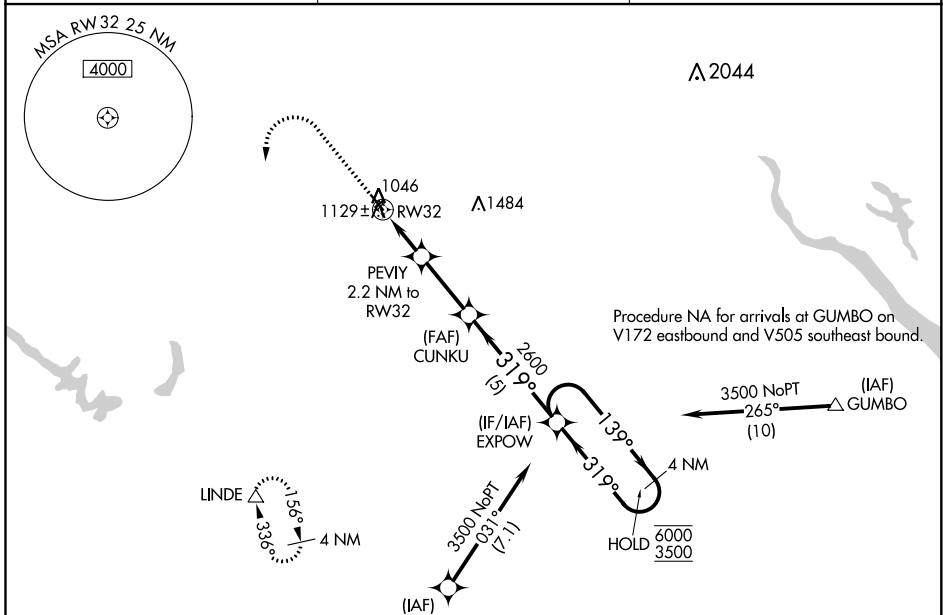
WAAS CH 90508 W32A	APP CRS 319°	Rwy Idg TDZE Apt Elev	4001 1012 1013
--	------------------------	-----------------------------	---

RNAV (GPS) RWY 32

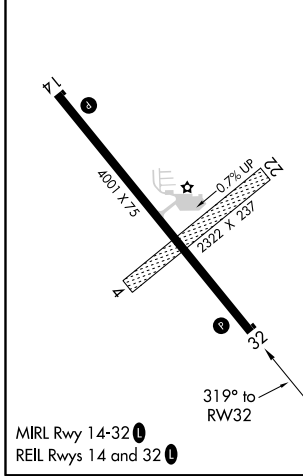
PERRY MUNI (P.R.O.)

RNP APCH-GPS.	MISSED APPROACH: Climb to 1500 then climbing left turn to 3500 direct LINDE and hold.
---------------	---

AWOS-3 118.0	DES MOINES APP CON 135.2 360.7	UNICOM 122.8 (CTAF) 0
------------------------	--	---------------------------------



ELEV 1013	TDZE 1012
------------------	------------------



1500	3500	LINDE	VGSI and RNAV glidepath not coincident (VGSI Angle 3.00/TCH 28).	4 NM Holding Pattern
		PEVIY 2.2 NM to RW32	CUNKU 2600	EXPOW
		1.1 NM to RW32	1740	6000 / 3500
		RW32	319°	GP 3.00° TCH 40
		-1.1	-1.1	2.7 NM
				5 NM
CATEGORY	A	B	C	D
LPV DA	1212-1	200 (200-1)		NA
LNAV/VNAV DA	1299-1	287 (300-1)		NA
LNAV MDA	1380-1	368 (400-1)		NA
C CIRCLING	1460-1 447 (500-1)	1480-1 467 (500-1)		NA

NC-3, 30 DEC 2021 to 27 JAN 2022

NC-3, 30 DEC 2021 to 27 JAN 2022