

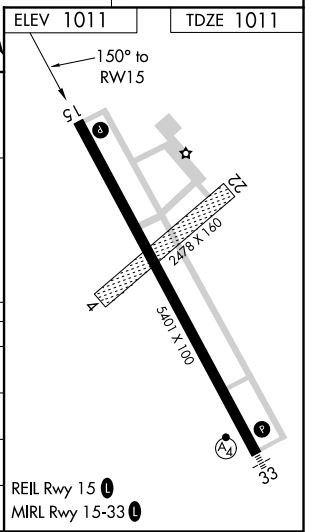
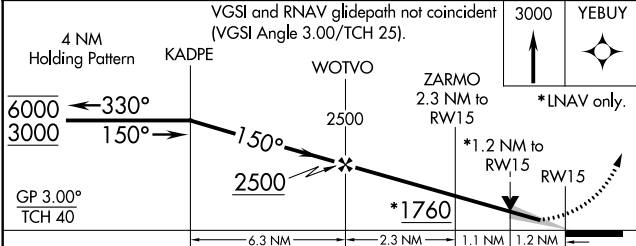
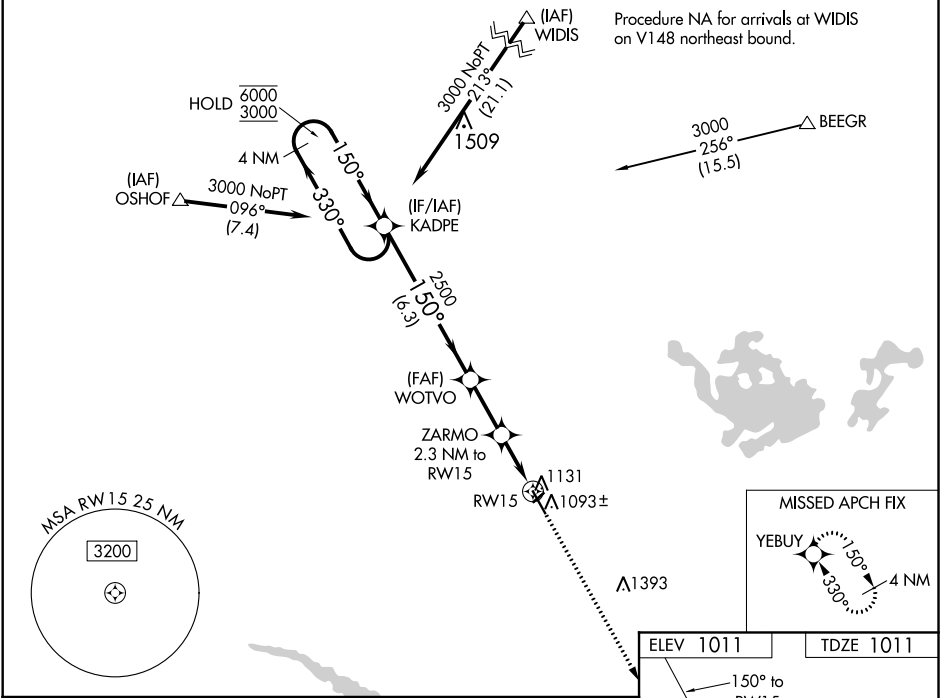
WAAS CH <b>87131</b> <b>W15A</b>	APP CRS <b>150°</b>	Rwy Idg <b>5401</b> TDZE <b>1011</b> Apt Elev <b>1011</b>
--	------------------------	--

# RNAV (GPS) RWY 15

NEW ULM MUNI (ULM)

RNP APCH.	MISSED APPROACH: Climb to 3000 direct YEBUY and hold.
▼ Circling NA to Rwys 4 and 22. For uncompensated Baro-VNAV systems, LNAV/VNAV NA below -17°C or above 54°C.	

AWOS-3 <b>118.325</b>	MINNEAPOLIS CENTER <b>127.1 290.2</b>	GCO <b>121.725</b>	UNICOM <b>122.8 (CTAF) 0</b>
--------------------------	--	-----------------------	---------------------------------



CATEGORY	A	B	C	D
LPV DA		1261-7/8	250 (300-7/8)	
LNAV/VNAV DA		1298-1	287 (300-1)	
LNAV MDA	1400-1	389 (400-1)	1400-1 1/8	389 (400-1 1/8)
CIRCLING	1440-1 429 (500-1)	1500-1 489 (500-1)	1620-1 3/4 609 (700-1 3/4)	1620-2 609 (700-2)

NC-1, 30 DEC 2021 to 27 JAN 2022

NC-1, 30 DEC 2021 to 27 JAN 2022