

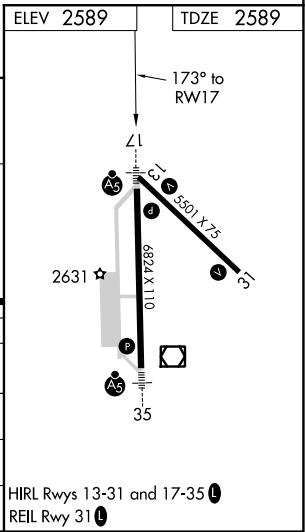
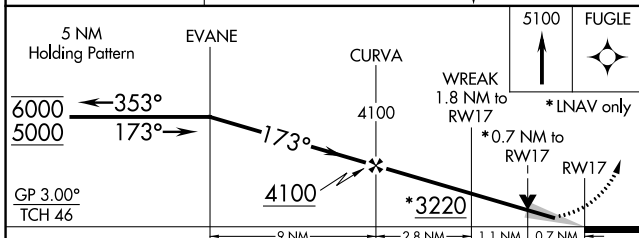
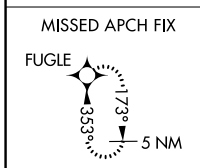
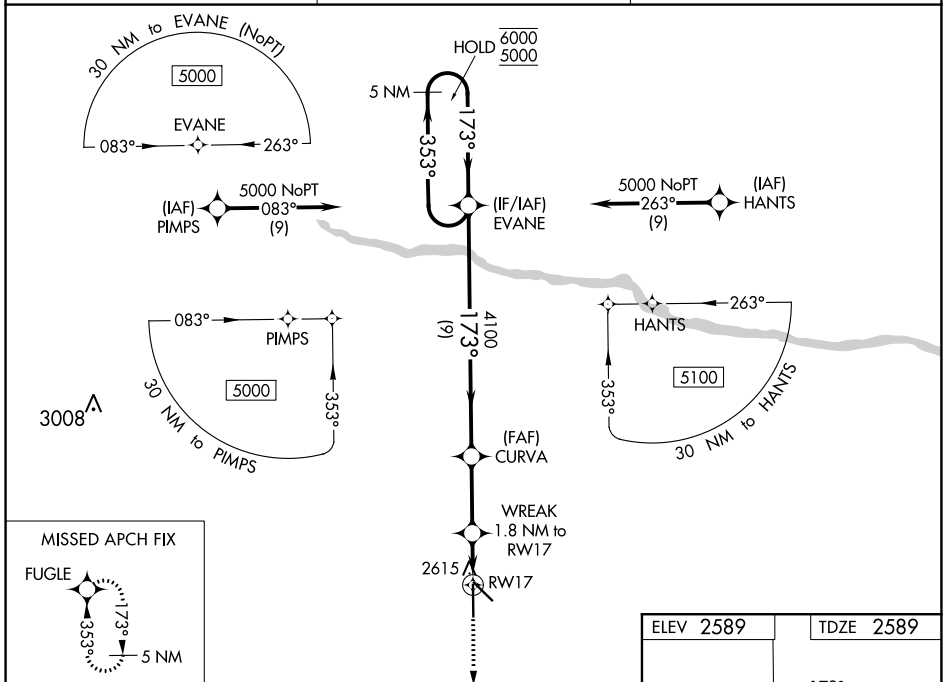
WAAS CH 70417 W17A	APP CRS 173°	Rwy Idg TDZE Apt Elev	6824 2589 2589
--	------------------------	-----------------------------	---

RNAV (GPS) RWY 17

AINSWORTH RGNL (A.N.W)

RNP APCH.	MALSR	MISSED APPROACH: Climb to 5100 direct FUGLE and hold.
<p>▼ For uncompensated Baro-VNAV systems, LNAV/VNAV NA below -20°C or above 54°C. For inop ALS, increase LNAV/VNAV all Cats visibility to ¾ SM, and LNAV Cats C/D visibility to ½ SM.</p>		

AWOS-3 118.325	DENVER CENTER 127.95 338.2	UNICOM 122.8 (CTAF) U
--------------------------	--------------------------------------	--



CATEGORY	A	B	C	D
LPV DA		2789-½	200 (200-½)	
LNAV/VNAV DA		2839-½	250 (300-½)	
LNAV MDA		2880-½	291 (300-½)	
CIRCLING	3000-1 411 (500-1)	3040-1 451 (500-1)	3040-1½ 451 (500-1½)	3200-2 611 (700-2)

NC-2, 30 DEC 2021 to 27 JAN 2022

NC-2, 30 DEC 2021 to 27 JAN 2022